

WNT8A Antibody (Internal)
Rabbit Polyclonal Antibody
Catalog # ALS10991**Specification**

WNT8A Antibody (Internal) - Product Information

Application	IHC
Primary Accession	O9H1J5
Reactivity	Human, Monkey, Horse
Host	Rabbit
Clonality	Polyclonal
Calculated MW	39kDa KDa

WNT8A Antibody (Internal) - Additional Information**Gene ID** 7478**Other Names**

Protein Wnt-8a, Protein Wnt-8d, WNT8A, WNT8D

Target/Specificity

Human WNT8A. BLAST analysis of the peptide immunogen showed no homology with other human proteins.

Reconstitution & Storage

Long term: -70°C; Short term: +4°C

Precautions

WNT8A Antibody (Internal) is for research use only and not for use in diagnostic or therapeutic procedures.

WNT8A Antibody (Internal) - Protein Information**Name** WNT8A**Synonyms** WNT8D**Function**

Ligand for members of the frizzled family of seven transmembrane receptors. Plays a role in embryonic patterning.

Cellular Location

Secreted, extracellular space, extracellular matrix. Secreted

Volume

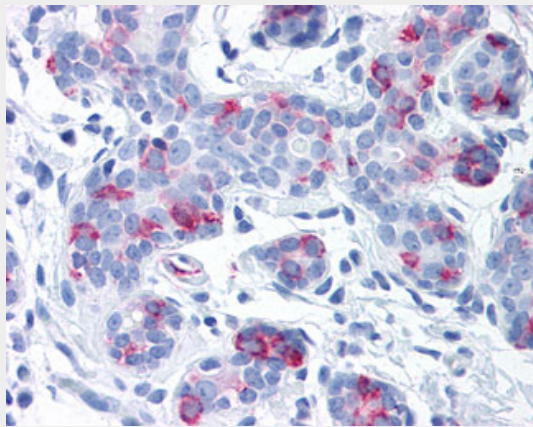
50 µl

WNT8A Antibody (Internal) - Protocols

Provided below are standard protocols that you may find useful for product applications.

- [Western Blot](#)
- [Blocking Peptides](#)
- [Dot Blot](#)
- [Immunohistochemistry](#)
- [Immunofluorescence](#)
- [Immunoprecipitation](#)
- [Flow Cytometry](#)
- [Cell Culture](#)

WNT8A Antibody (Internal) - Images



Anti-WNT8A antibody ALS10991 IHC of human breast.

WNT8A Antibody (Internal) - Background

Ligand for members of the frizzled family of seven transmembrane receptors. May play an important role in the development and differentiation of certain forebrain structures, notably the hippocampus.

WNT8A Antibody (Internal) - References

Saitoh T., et al. *Int. J. Oncol.* 19:123-127(2001).
Testa T.T., et al. Submitted (AUG-2000) to the EMBL/GenBank/DDBJ databases.