

KIAA1324 / maba1 Antibody (Internal)
Rabbit Polyclonal Antibody
Catalog # ALS10981**Specification**

KIAA1324 / maba1 Antibody (Internal) - Product Information

Application	IHC
Primary Accession	Q6UXG2
Reactivity	Human
Host	Rabbit
Clonality	Polyclonal
Calculated MW	111kDa KDa

KIAA1324 / maba1 Antibody (Internal) - Additional Information**Gene ID** 57535**Other Names**

UPF0577 protein KIAA1324, Estrogen-induced gene 121 protein, KIAA1324, EIG121

Target/Specificity

Human KIAA1324. BLAST analysis of the peptide immunogen showed no homology with other human proteins.

Reconstitution & Storage

Long term: -70°C; Short term: +4°C

Precautions

KIAA1324 / maba1 Antibody (Internal) is for research use only and not for use in diagnostic or therapeutic procedures.

KIAA1324 / maba1 Antibody (Internal) - Protein Information**Name** ELAPOR1 ([HGNC:29618](#))**Function**May protect cells from cell death by inducing cytosolic vacuolization and up-regulating the autophagy pathway (PubMed: <http://www.uniprot.org/citations/21072319> target="_blank">21072319). May play a role in apoptosis and cell proliferation through its interaction with HSPA5 (PubMed: <http://www.uniprot.org/citations/26045166> target="_blank">26045166).**Cellular Location**

Cell membrane; Single-pass type I membrane protein. Late endosome membrane; Single-pass type I membrane protein. Golgi apparatus, trans-Golgi network membrane; Single-pass type I membrane protein. Lysosome membrane; Single-pass membrane protein. Endoplasmic reticulum membrane; Single-pass type I membrane protein

Tissue Location

Expressed in normal endometrium but overexpressed in endometrioid tumors.

Volume

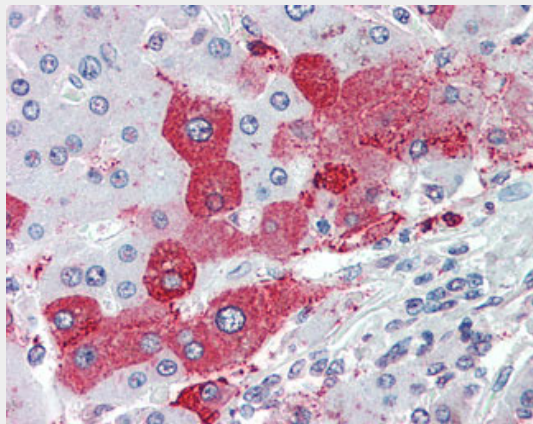
72 μ l

KIAA1324 / maba1 Antibody (Internal) - Protocols

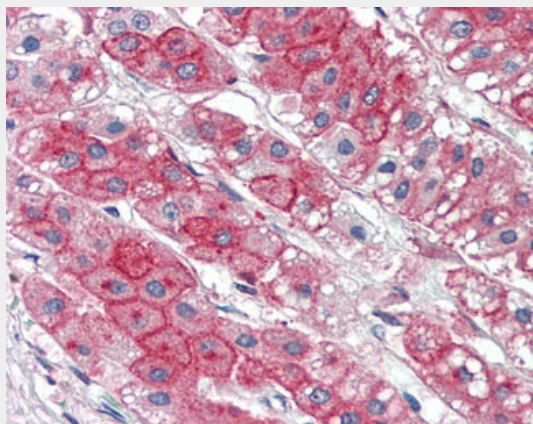
Provided below are standard protocols that you may find useful for product applications.

- [Western Blot](#)
- [Blocking Peptides](#)
- [Dot Blot](#)
- [Immunohistochemistry](#)
- [Immunofluorescence](#)
- [Immunoprecipitation](#)
- [Flow Cytometry](#)
- [Cell Culture](#)

KIAA1324 / maba1 Antibody (Internal) - Images



Anti-KIAA1324 antibody ALS10981 IHC of human liver.



Anti-KIAA1324 antibody ALS10981 IHC of human adrenal.

KIAA1324 / maba1 Antibody (Internal) - Background

May protect cells from cell death by inducing cytosolic vacuolization and upregulating the autophagy pathway.

KIAA1324 / maba1 Antibody (Internal) - References

Clark H.F., et al. *Genome Res.* 13:2265-2270(2003).

Gregory S.G., et al. *Nature* 441:315-321(2006).

Nagase T., et al. *DNA Res.* 7:65-73(2000).

Deng L., et al. *Clin. Cancer Res.* 11:8258-8264(2005).

Deng L., et al. *Cell Death Dis.* 1:E32-E32(2010).