

PIGR Antibody (Extracellular Domain)
Rabbit Polyclonal Antibody
Catalog # ALS10980

Specification

PIGR Antibody (Extracellular Domain) - Product Information

Application	IHC
Primary Accession	P01833
Reactivity	Human
Host	Rabbit
Clonality	Polyclonal
Calculated MW	83kDa KDa

PIGR Antibody (Extracellular Domain) - Additional Information

Gene ID 5284

Other Names

Polymeric immunoglobulin receptor, PIgR, Poly-Ig receptor, Hepatocellular carcinoma-associated protein TB6, Secretory component, PIGR

Target/Specificity

Human PIGR. BLAST analysis of the peptide immunogen showed no homology with other human proteins.

Reconstitution & Storage

Long term: -70°C; Short term: +4°C

Precautions

PIGR Antibody (Extracellular Domain) is for research use only and not for use in diagnostic or therapeutic procedures.

PIGR Antibody (Extracellular Domain) - Protein Information

Name PIGR

Function

[Polymeric immunoglobulin receptor]: Mediates selective transcytosis of polymeric IgA and IgM across mucosal epithelial cells. Binds polymeric IgA and IgM at the basolateral surface of epithelial cells. The complex is then transported across the cell to be secreted at the apical surface. During this process, a cleavage occurs that separates the extracellular (known as the secretory component) from the transmembrane segment.

Cellular Location

[Polymeric immunoglobulin receptor]: Cell membrane; Single-pass type I membrane protein

Volume

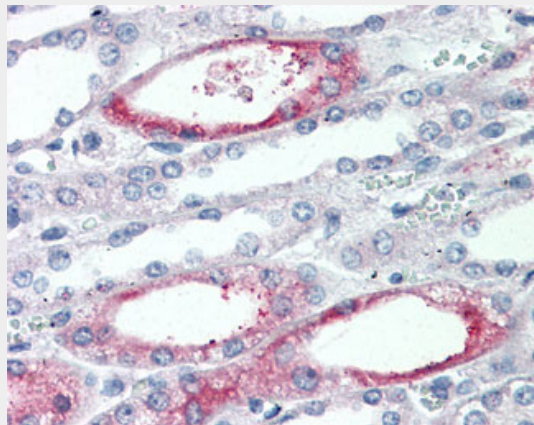
100 µl

PIGR Antibody (Extracellular Domain) - Protocols

Provided below are standard protocols that you may find useful for product applications.

- [Western Blot](#)
- [Blocking Peptides](#)
- [Dot Blot](#)
- [Immunohistochemistry](#)
- [Immunofluorescence](#)
- [Immunoprecipitation](#)
- [Flow Cytometry](#)
- [Cell Culture](#)

PIGR Antibody (Extracellular Domain) - Images



Anti-PIGR antibody ALS10980 IHC of human kidney.

PIGR Antibody (Extracellular Domain) - Background

This receptor binds polymeric IgA and IgM at the basolateral surface of epithelial cells. The complex is then transported across the cell to be secreted at the apical surface. During this process a cleavage occurs that separates the extracellular (known as the secretory component) from the transmembrane segment.

PIGR Antibody (Extracellular Domain) - References

- Krajci P., et al. Hum. Genet. 87:642-648(1991).
Krajci P., et al. Eur. J. Immunol. 22:2309-2315(1992).
Dong X., et al. Submitted (NOV-2002) to the EMBL/GenBank/DDBJ databases.
Bechtel S., et al. BMC Genomics 8:399-399(2007).
Krajci P., et al. Biochem. Biophys. Res. Commun. 158:783-789(1989).