

PRKCZ / PKC-Zeta Antibody (Cytoplasmic Domain)
Rabbit Polyclonal Antibody
Catalog # ALS10975**Specification**

PRKCZ / PKC-Zeta Antibody (Cytoplasmic Domain) - Product Information

Application	IHC
Primary Accession	Q05513
Reactivity	Human
Host	Rabbit
Clonality	Polyclonal
Calculated MW	68kDa KDa

PRKCZ / PKC-Zeta Antibody (Cytoplasmic Domain) - Additional Information**Gene ID** 5590**Other Names**

Protein kinase C zeta type, 2.7.11.13, nPKC-zeta, PRKCZ, PKC2

Target/Specificity

Human PRKCZ / PKC-Zeta. BLAST analysis of the peptide immunogen showed no homology with other human proteins.

Reconstitution & Storage

Long term: -70°C; Short term: +4°C

Precautions

PRKCZ / PKC-Zeta Antibody (Cytoplasmic Domain) is for research use only and not for use in diagnostic or therapeutic procedures.

PRKCZ / PKC-Zeta Antibody (Cytoplasmic Domain) - Protein Information**Name** PRKCZ**Synonyms** PKC2**Function**

Calcium- and diacylglycerol-independent serine/threonine- protein kinase that functions in phosphatidylinositol 3-kinase (PI3K) pathway and mitogen-activated protein (MAP) kinase cascade, and is involved in NF-kappa-B activation, mitogenic signaling, cell proliferation, cell polarity, inflammatory response and maintenance of long-term potentiation (LTP). Upon lipopolysaccharide (LPS) treatment in macrophages, or following mitogenic stimuli, functions downstream of PI3K to activate MAP2K1/MEK1-MAPK1/ERK2 signaling cascade independently of RAF1 activation. Required for insulin-dependent activation of AKT3, but may function as an adapter rather than a direct activator. Upon insulin treatment may act as a downstream effector of PI3K and contribute to the activation of translocation of the glucose transporter SLC2A4/GLUT4 and subsequent glucose transport in adipocytes. In EGF-induced cells, binds and activates MAP2K5/MEK5- MAPK7/ERK5

independently of its kinase activity and can activate JUN promoter through MEF2C. Through binding with SQSTM1/p62, functions in interleukin-1 signaling and activation of NF-kappa-B with the specific adapters RIPK1 and TRAF6. Participates in TNF-dependent transactivation of NF-kappa-B by phosphorylating and activating IKBKB kinase, which in turn leads to the degradation of NF-kappa-B inhibitors. In migrating astrocytes, forms a cytoplasmic complex with PARD6A and is recruited by CDC42 to function in the establishment of cell polarity along with the microtubule motor and dynein. In association with FEZ1, stimulates neuronal differentiation in PC12 cells. In the inflammatory response, is required for the T-helper 2 (Th2) differentiation process, including interleukin production, efficient activation of JAK1 and the subsequent phosphorylation and nuclear translocation of STAT6. May be involved in development of allergic airway inflammation (asthma), a process dependent on Th2 immune response. In the NF-kappa-B-mediated inflammatory response, can relieve SETD6-dependent repression of NF-kappa-B target genes by phosphorylating the RELA subunit at 'Ser-311'. Phosphorylates VAMP2 in vitro (PubMed:17313651). Phosphorylates and activates LRRK1, which phosphorylates RAB proteins involved in intracellular trafficking (PubMed:36040231).

Cellular Location

Cytoplasm. Endosome Cell junction. Membrane {ECO:0000250|UniProtKB:P09217}; Peripheral membrane protein. Note=In the retina, localizes in the terminals of the rod bipolar cells (By similarity). Associates with endosomes (PubMed:9566925). Presence of KRIT1, CDH5 and RAP1B is required for its localization to the cell junction (PubMed:7597083). Colocalizes with VAMP2 and WDFY2 in intracellular vesicles (PubMed:17313651) Transiently translocates to the membrane of CA1 hippocampal cells in response to the induction of long term potentiation (By similarity) {ECO:0000250|UniProtKB:P09217, ECO:0000269|PubMed:17313651, ECO:0000269|PubMed:7597083, ECO:0000269|PubMed:9566925}

Tissue Location

Expressed in brain, and to a lesser extent in lung, kidney and testis

Volume

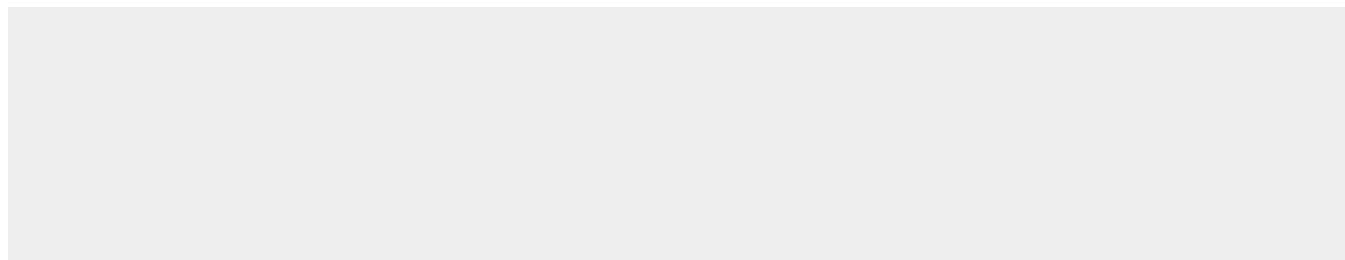
50 µl

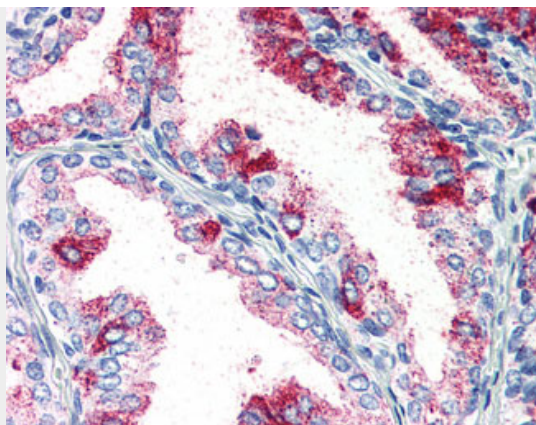
PRKCZ / PKC-Zeta Antibody (Cytoplasmic Domain) - Protocols

Provided below are standard protocols that you may find useful for product applications.

- [Western Blot](#)
- [Blocking Peptides](#)
- [Dot Blot](#)
- [Immunohistochemistry](#)
- [Immunofluorescence](#)
- [Immunoprecipitation](#)
- [Flow Cytometry](#)
- [Cell Culture](#)

PRKCZ / PKC-Zeta Antibody (Cytoplasmic Domain) - Images





Anti-PRKCZ / PKC-Zeta antibody ALS10975 IHC of human prostate.

PRKCZ / PKC-Zeta Antibody (Cytoplasmic Domain) - Background

Calcium- and diacylglycerol-independent serine/threonine-protein kinase that functions in phosphatidylinositol 3-kinase (PI3K) pathway and mitogen-activated protein (MAP) kinase cascade, and is involved in NF-kappa-B activation, mitogenic signaling, cell proliferation, cell polarity, inflammatory response and maintenance of long-term potentiation (LTP). Upon lipopolysaccharide (LPS) treatment in macrophages, or following mitogenic stimuli, functions downstream of PI3K to activate MAP2K1/MEK1-MAPK1/ERK2 signaling cascade independently of RAF1 activation. Required for insulin-dependent activation of AKT3, but may function as an adapter rather than a direct activator. Upon insulin treatment may act as a downstream effector of PI3K and contribute to the activation of translocation of the glucose transporter SLC2A4/GLUT4 and subsequent glucose transport in adipocytes. In EGF-induced cells, binds and activates MAP2K5/MEK5-MAPK7/ERK5 independently of its kinase activity and can activate JUN promoter through MEF2C. Through binding with SQSTM1/p62, functions in interleukin-1 signaling and activation of NF-kappa-B with the specific adapters RIPK1 and TRAF6. Participates in TNF-dependent transactivation of NF-kappa-B by phosphorylating and activating IKBKB kinase, which in turn leads to the degradation of NF-kappa-B inhibitors. In migrating astrocytes, forms a cytoplasmic complex with PARD6A and is recruited by CDC42 to function in the establishment of cell polarity along with the microtubule motor and dynein. In association with FEZ1, stimulates neuronal differentiation in PC12 cells. In the inflammatory response, is required for the T-helper 2 (Th2) differentiation process, including interleukin production, efficient activation of JAK1 and the subsequent phosphorylation and nuclear translocation of STAT6. May be involved in development of allergic airway inflammation (asthma), a process dependent on Th2 immune response. In the NF-kappa-B-mediated inflammatory response, can relieve SETD6-dependent repression of NF-kappa-B target genes by phosphorylating the RELA subunit at 'Ser-311'. Necessary and sufficient for LTP maintenance in hippocampal CA1 pyramidal cells. In vein endothelial cells treated with the oxidant peroxynitrite, phosphorylates STK11 leading to nuclear export of STK11, subsequent inhibition of PI3K/Akt signaling, and increased apoptosis.

PRKCZ / PKC-Zeta Antibody (Cytoplasmic Domain) - References

- Barbee J.L.,et al.Gene 132:305-306(1993).
Kalnine N.,et al.Submitted (MAY-2003) to the EMBL/GenBank/DDBJ databases.
Ota T.,et al.Nat. Genet. 36:40-45(2004).
Gregory S.G.,et al.Nature 441:315-321(2006).
Kochs G.,et al.Eur. J. Biochem. 216:597-606(1993).