

**SURF4 Antibody (N-Terminus)**  
**Rabbit Polyclonal Antibody**  
**Catalog # ALS10973****Specification**

---

**SURF4 Antibody (N-Terminus) - Product Information**

Application	IHC
Primary Accession	<a href="#">O15260</a>
Reactivity	Human, Mouse, Monkey, Bovine
Host	Rabbit
Clonality	Polyclonal
Calculated MW	30kDa KDa

**SURF4 Antibody (N-Terminus) - Additional Information****Gene ID** 6836**Other Names**

Surfeit locus protein 4, SURF4, SURF-4

**Target/Specificity**

Human SURF4. BLAST analysis of the peptide immunogen showed no homology with other human proteins.

**Reconstitution & Storage**

Long term: -70°C; Short term: +4°C

**Precautions**

SURF4 Antibody (N-Terminus) is for research use only and not for use in diagnostic or therapeutic procedures.

**SURF4 Antibody (N-Terminus) - Protein Information****Name** SURF4 {ECO:0000303|PubMed:18287528, ECO:0000312|HGNC:HGNC:11476}**Function**

Endoplasmic reticulum cargo receptor that mediates the export of lipoproteins by recruiting cargos into COPII vesicles to facilitate their secretion (PubMed: [29643117](http://www.uniprot.org/citations/29643117), PubMed: [30251625](http://www.uniprot.org/citations/30251625), PubMed: [33186557](http://www.uniprot.org/citations/33186557)). Acts as a cargo receptor for lipoproteins bearing both APOB and APOA1, thereby regulating lipoprotein delivery and the maintenance of lipid homeostasis (PubMed: [29643117](http://www.uniprot.org/citations/29643117), PubMed: [33186557](http://www.uniprot.org/citations/33186557)). Synergizes with the GTPase SAR1B to mediate transport of circulating lipoproteins (PubMed: [33186557](http://www.uniprot.org/citations/33186557)). Promotes the secretion of PCSK9 (PubMed: [30251625](http://www.uniprot.org/citations/30251625))

target="\_blank">30251625</a>). Also mediates the efficient secretion of erythropoietin (EPO) (PubMed:<a href="http://www.uniprot.org/citations/32989016" target="\_blank">32989016</a>). May also play a role in the maintenance of the architecture of the endoplasmic reticulum-Golgi intermediate compartment and of the Golgi (PubMed:<a href="http://www.uniprot.org/citations/18287528" target="\_blank">18287528</a>).

#### Cellular Location

Endoplasmic reticulum membrane; Multi-pass membrane protein. Endoplasmic reticulum-Golgi intermediate compartment membrane; Multi-pass membrane protein. Golgi apparatus membrane; Multi-pass membrane protein. Note=Active at endoplasmic reticulum exit sites (ERES) where it is incorporated together with its lipoprotein cargos into COPII-coated vesicles. From the Golgi it is recycled back to the endoplasmic reticulum.

#### Volume

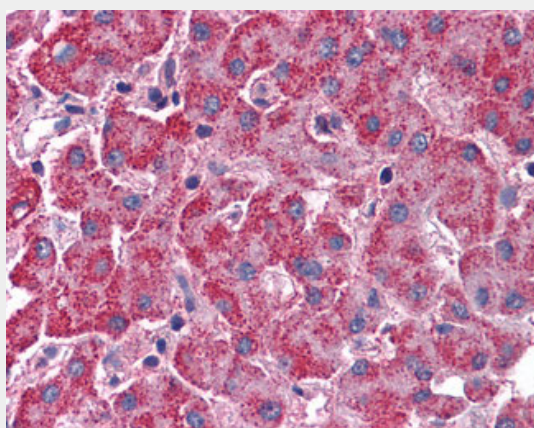
50 µl

#### SURF4 Antibody (N-Terminus) - Protocols

Provided below are standard protocols that you may find useful for product applications.

- [Western Blot](#)
- [Blocking Peptides](#)
- [Dot Blot](#)
- [Immunohistochemistry](#)
- [Immunofluorescence](#)
- [Immunoprecipitation](#)
- [Flow Cytometry](#)
- [Cell Culture](#)

#### SURF4 Antibody (N-Terminus) - Images



Anti-SURF4 antibody ALS10973 IHC of human liver.

#### SURF4 Antibody (N-Terminus) - Background

May play a role in the maintenance of the architecture of the endoplasmic reticulum-Golgi intermediate compartment and of the Golgi.

#### SURF4 Antibody (N-Terminus) - References

Hu R.-M., et al. Proc. Natl. Acad. Sci. U.S.A. 97:9543-9548(2000).

Ota T.,et al.Nat. Genet. 36:40-45(2004).  
Humphray S.J.,et al.Nature 429:369-374(2004).  
Mural R.J.,et al.Submitted (JUL-2005) to the EMBL/GenBank/DDBJ databases.  
Reeves J.E.,et al.Mol. Membr. Biol. 12:201-208(1995).