

ENTPD2 Antibody (Internal)
Rabbit Polyclonal Antibody
Catalog # ALS10971

Specification

ENTPD2 Antibody (Internal) - Product Information

Application	IHC
Primary Accession	O9Y5L3
Reactivity	Human, Monkey
Host	Rabbit
Clonality	Polyclonal
Calculated MW	54kDa KDa

ENTPD2 Antibody (Internal) - Additional Information

Gene ID 954

Other Names

Ectonucleoside triphosphate diphosphohydrolase 2, NTPDase 2, 3.6.1.-, CD39 antigen-like 1, Ecto-ATP diphosphohydrolase 2, Ecto-ATPDase 2, Ecto-ATPase 2, ENTPD2, CD39L1

Target/Specificity

Human ENTPD2. BLAST analysis of the peptide immunogen showed no homology with other human proteins.

Reconstitution & Storage

Long term: -70°C; Short term: +4°C

Precautions

ENTPD2 Antibody (Internal) is for research use only and not for use in diagnostic or therapeutic procedures.

ENTPD2 Antibody (Internal) - Protein Information

Name ENTPD2

Synonyms CD39L1

Function

In the nervous system, could hydrolyze ATP and other nucleotides to regulate purinergic neurotransmission. Hydrolyzes ADP only to a marginal extent. The order of activity with different substrates is ATP > GTP > CTP = ITP > UTP >> ADP = UDP.

Cellular Location

[Isoform Long]: Cell membrane; Multi-pass membrane protein [Isoform gamma]: Endoplasmic reticulum membrane; Multi-pass membrane protein

Tissue Location

Brain, placenta, skeletal muscle, kidney, pancreas, heart, ovary, testis, colon, small intestine, prostate and pancreas. No expression in adult thymus, spleen, lung, liver and peripheral blood leukocytes

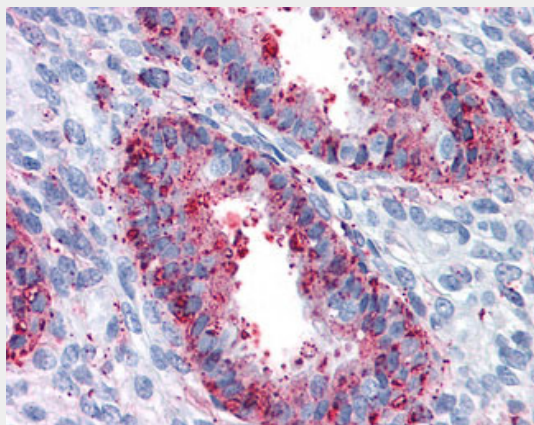
Volume
83 μ l

ENTPD2 Antibody (Internal) - Protocols

Provided below are standard protocols that you may find useful for product applications.

- [Western Blot](#)
- [Blocking Peptides](#)
- [Dot Blot](#)
- [Immunohistochemistry](#)
- [Immunofluorescence](#)
- [Immunoprecipitation](#)
- [Flow Cytometry](#)
- [Cell Culture](#)

ENTPD2 Antibody (Internal) - Images



Anti-ENTPD2 antibody ALS10971 IHC of human uterus.

ENTPD2 Antibody (Internal) - Background

In the nervous system, could hydrolyze ATP and other nucleotides to regulate purinergic neurotransmission. Hydrolyzes ADP only to a marginal extent. The order of activity with different substrates is ATP > GTP > CTP = ITP > UTP >> ADP = UDP.

ENTPD2 Antibody (Internal) - References

Chadwick B.P., et al. *Mamm. Genome* 8:668-672(1997).
Mateo J., et al. *Br. J. Pharmacol.* 128:396-402(1999).
Mukasa T., et al. *Biochemistry* 44:11160-11170(2005).
Humphray S.J., et al. *Nature* 429:369-374(2004).
Mural R.J., et al. Submitted (JUL-2005) to the EMBL/GenBank/DDBJ databases.