

TM9SF3 Antibody (Internal)
Rabbit Polyclonal Antibody
Catalog # ALS10943**Specification**

TM9SF3 Antibody (Internal) - Product Information

| | |
|-------------------|---|
| Application | IHC |
| Primary Accession | O9HD45 |
| Reactivity | Human, Mouse, Rabbit, Monkey, Pig, Chicken, Horse, Xenopus, Bovine, Guinea Pig, Dog |
| Host | Rabbit |
| Clonality | Polyclonal |
| Calculated MW | 68kDa KDa |

TM9SF3 Antibody (Internal) - Additional Information**Gene ID** 56889**Other Names**

Transmembrane 9 superfamily member 3, EP70-P-iso, SM-11044-binding protein, TM9SF3, SMBP

Target/Specificity

Human TM9SF3. BLAST analysis of the peptide immunogen showed no homology with other human proteins.

Reconstitution & Storage

Long term: -70°C; Short term: +4°C

Precautions

TM9SF3 Antibody (Internal) is for research use only and not for use in diagnostic or therapeutic procedures.

TM9SF3 Antibody (Internal) - Protein Information**Name** TM9SF3**Synonyms** SMBP**Cellular Location**

Membrane; Multi-pass membrane protein

Volume

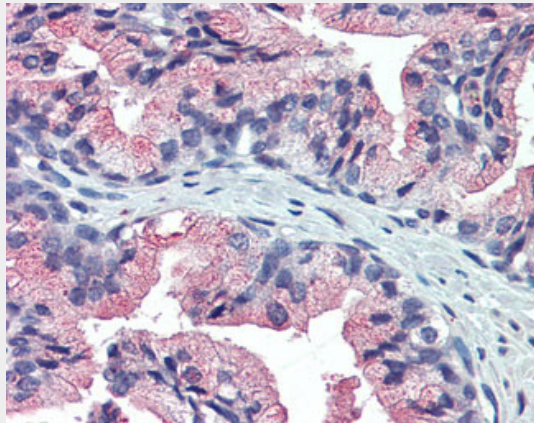
50 µl

TM9SF3 Antibody (Internal) - Protocols

Provided below are standard protocols that you may find useful for product applications.

- [Western Blot](#)
- [Blocking Peptides](#)
- [Dot Blot](#)
- [Immunohistochemistry](#)
- [Immunofluorescence](#)
- [Immunoprecipitation](#)
- [Flow Cytometry](#)
- [Cell Culture](#)

TM9SF3 Antibody (Internal) - Images



Anti-TM9SF3 antibody IHC of prostate, human.

TM9SF3 Antibody (Internal) - References

- Warner S.J., et al. Submitted (MAY-2000) to the EMBL/GenBank/DDBJ databases.
Gu Y., et al. Submitted (JUN-1999) to the EMBL/GenBank/DDBJ databases.
Deloukas P., et al. Nature 429:375-381(2004).
Mural R.J., et al. Submitted (SEP-2005) to the EMBL/GenBank/DDBJ databases.
Sugasawa T., et al. Submitted (DEC-1998) to the EMBL/GenBank/DDBJ databases.