

**GLG1 / MG160 Antibody (Internal)**  
**Rabbit Polyclonal Antibody**  
**Catalog # ALS10939**

**Specification**

---

**GLG1 / MG160 Antibody (Internal) - Product Information**

Application	IHC
Primary Accession	<a href="#">O92896</a>
Reactivity	Human, Mouse, Rabbit, Hamster, Monkey, Pig, Horse, Bovine, Guinea Pig, Dog
Host	Rabbit
Clonality	Polyclonal
Calculated MW	135kDa KDa

**GLG1 / MG160 Antibody (Internal) - Additional Information**

**Gene ID** 2734

**Other Names**

Golgi apparatus protein 1, CFR-1, Cysteine-rich fibroblast growth factor receptor, E-selectin ligand 1, ESL-1, Golgi sialoglycoprotein MG-160, GLG1, CFR1, ESL1, MG160

**Target/Specificity**

Human GLG1. BLAST analysis of the peptide immunogen showed no homology with other human proteins.

**Reconstitution & Storage**

Long term: -70°C; Short term: +4°C

**Precautions**

GLG1 / MG160 Antibody (Internal) is for research use only and not for use in diagnostic or therapeutic procedures.

**GLG1 / MG160 Antibody (Internal) - Protein Information**

**Name** GLG1

**Synonyms** CFR1, ESL1, MG160

**Function**

Binds fibroblast growth factor and E-selectin (cell-adhesion lectin on endothelial cells mediating the binding of neutrophils).

**Cellular Location**

Golgi apparatus membrane; Single-pass type I membrane protein. Golgi outpost {ECO:0000250|UniProtKB:Q62638}. Cytoplasm, cytoskeleton, microtubule organizing center {ECO:0000250|UniProtKB:Q62638}. Note=Golgi medial cisternae. Localizes to the postsynaptic Golgi apparatus region, also named Golgi outpost, which shapes dendrite morphology by

functioning as sites of acentrosomal microtubule nucleation. {ECO:0000250|UniProtKB:Q62638}

#### **Tissue Location**

Widely expressed. Highest levels in pancreas, skeletal muscle, placenta, heart, testis and ovary. Also found in the kidney, liver, lung and brain.

#### **Volume**

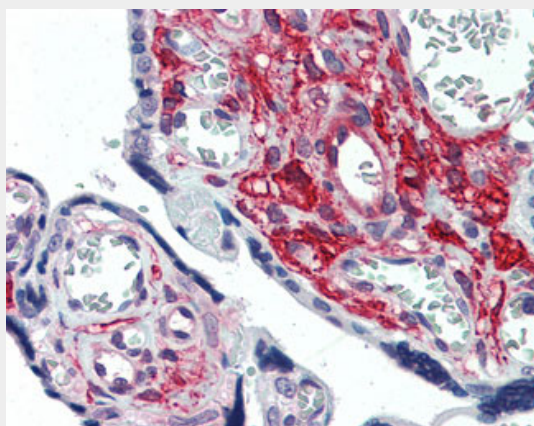
50  $\mu$ l

#### **GLG1 / MG160 Antibody (Internal) - Protocols**

Provided below are standard protocols that you may find useful for product applications.

- [Western Blot](#)
- [Blocking Peptides](#)
- [Dot Blot](#)
- [Immunohistochemistry](#)
- [Immunofluorescence](#)
- [Immunoprecipitation](#)
- [Flow Cytometry](#)
- [Cell Culture](#)

#### **GLG1 / MG160 Antibody (Internal) - Images**



Anti-GLG1 antibody ALS10939 IHC of human placenta.

#### **GLG1 / MG160 Antibody (Internal) - Background**

Binds fibroblast growth factor and E-selectin (cell- adhesion lectin on endothelial cells mediating the binding of neutrophils).

#### **GLG1 / MG160 Antibody (Internal) - References**

- Mourelatos Z., et al. DNA Cell Biol. 15:1121-1128(1996).  
Wu M., et al. Submitted (JUN-1995) to the EMBL/GenBank/DDBJ databases.  
Ota T., et al. Nat. Genet. 36:40-45(2004).  
Martin J., et al. Nature 432:988-994(2004).  
Mural R.J., et al. Submitted (SEP-2005) to the EMBL/GenBank/DDBJ databases.