

CDK12 / CRKRS Antibody (C-Terminus)
Rabbit Polyclonal Antibody
Catalog # ALS10900**Specification**

CDK12 / CRKRS Antibody (C-Terminus) - Product Information

Application	IHC
Primary Accession	O9NYV4
Reactivity	Human, Mouse, Rabbit, Hamster, Monkey, Dog
Host	Rabbit
Clonality	Polyclonal
Calculated MW	164kDa KDa

CDK12 / CRKRS Antibody (C-Terminus) - Additional Information**Gene ID** 51755**Other Names**

Cyclin-dependent kinase 12, 2.7.11.22, 2.7.11.23, Cdc2-related kinase, arginine/serine-rich, CrkRS, Cell division cycle 2-related protein kinase 7, CDC2-related protein kinase 7, Cell division protein kinase 12, hCDK12, CDK12, CRK7, CRKRS, KIAA0904

Target/Specificity

Human CDK12 / CRKRS. BLAST analysis of the peptide immunogen showed no homology with other human proteins, except POMT1 (37%).

Reconstitution & Storage

Long term: -70°C; Short term: +4°C

Precautions

CDK12 / CRKRS Antibody (C-Terminus) is for research use only and not for use in diagnostic or therapeutic procedures.

CDK12 / CRKRS Antibody (C-Terminus) - Protein Information**Name** CDK12**Synonyms** CRK7, CRKRS, KIAA0904**Function**

Cyclin-dependent kinase that phosphorylates the C-terminal domain (CTD) of the large subunit of RNA polymerase II (POLR2A), thereby acting as a key regulator of transcription elongation. Regulates the expression of genes involved in DNA repair and is required for the maintenance of genomic stability. Preferentially phosphorylates 'Ser-5' in CTD repeats that are already phosphorylated at 'Ser-7', but can also phosphorylate 'Ser-2'. Required for RNA splicing, possibly by phosphorylating SRSF1/SF2. Involved in regulation of MAP kinase activity, possibly leading to affect the response to estrogen inhibitors.

Cellular Location

Nucleus. Nucleus speckle. Note=Colocalized with nuclear speckles throughout interphase.

Tissue Location

Widely expressed..

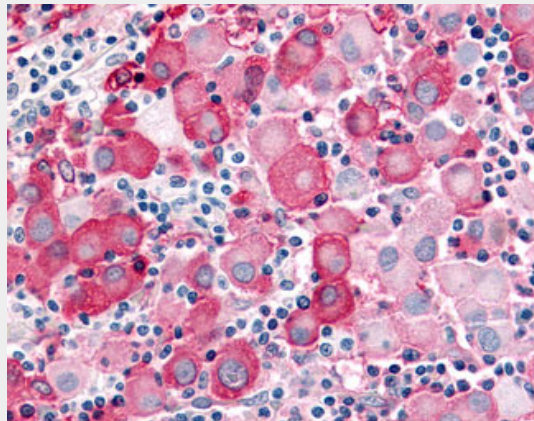
Volume

50 μ l

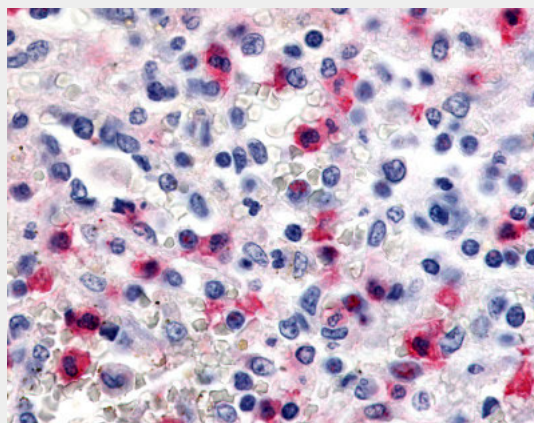
CDK12 / CRKRS Antibody (C-Terminus) - Protocols

Provided below are standard protocols that you may find useful for product applications.

- [Western Blot](#)
- [Blocking Peptides](#)
- [Dot Blot](#)
- [Immunohistochemistry](#)
- [Immunofluorescence](#)
- [Immunoprecipitation](#)
- [Flow Cytometry](#)
- [Cell Culture](#)

CDK12 / CRKRS Antibody (C-Terminus) - Images

Anti-CDK12 / CRKRS antibody IHC of human Skin, Melanoma.



Anti-CDK12 / CRKRS antibody ALS10900 IHC of human spleen.

CDK12 / CRKRS Antibody (C-Terminus) - Background

Cyclin-dependent kinase that phosphorylates the C- terminal domain (CTD) of the large subunit of RNA polymerase II (POLR2A), thereby acting as a key regulator of transcription elongation. Regulates the expression of genes involved in DNA repair and is required for the maintenance of genomic stability. Preferentially phosphorylates 'Ser-5' in CTD repeats that are already phosphorylated at 'Ser-7', but can also phosphorylate 'Ser-2'. Required for RNA splicing, possibly by phosphorylating SRSF1/SF2. Involved in regulation of MAP kinase activity, possibly leading to affect the response to estrogen inhibitors.

CDK12 / CRKRS Antibody (C-Terminus) - References

Ko T.K.,et al.J. Cell Sci. 114:2591-2603(2001).
Nagase T.,et al.DNA Res. 5:355-364(1998).
Nakajima D.,et al.DNA Res. 9:99-106(2002).
Ota T.,et al.Nat. Genet. 36:40-45(2004).
Zody M.C.,et al.Nature 440:1045-1049(2006).