

ACVR1C / ALK7 Antibody (Internal)
Rabbit Polyclonal Antibody
Catalog # ALS10885**Specification**

ACVR1C / ALK7 Antibody (Internal) - Product Information

Application	IHC
Primary Accession	Q8NER5
Reactivity	Human, Pig, Bovine
Host	Rabbit
Clonality	Polyclonal
Calculated MW	55kDa KDa

ACVR1C / ALK7 Antibody (Internal) - Additional Information**Gene ID** 130399**Other Names**

Activin receptor type-1C, 2.7.11.30, Activin receptor type IC, ACTR-IC, Activin receptor-like kinase 7, ALK-7, ACVR1C ([HGNC:18123](http://www.genenames.org/cgi-bin/gene_symbol_report?hgnc_id=18123))

Target/Specificity

Human ACVR1C. BLAST analysis of the peptide immunogen showed no homology with other human proteins.

Reconstitution & Storage

Long term: -70°C; Short term: +4°C

Precautions

ACVR1C / ALK7 Antibody (Internal) is for research use only and not for use in diagnostic or therapeutic procedures.

ACVR1C / ALK7 Antibody (Internal) - Protein Information**Name** ACVR1C ([HGNC:18123](#))**Function**

Serine/threonine protein kinase which forms a receptor complex on ligand binding. The receptor complex consisting of 2 type II and 2 type I transmembrane serine/threonine kinases. Type II receptors phosphorylate and activate type I receptors which autophosphorylate, then bind and activate SMAD transcriptional regulators, SMAD2 and SMAD3. Receptor for activin AB, activin B and NODAL. Plays a role in cell differentiation, growth arrest and apoptosis.

Cellular Location

Membrane; Single- pass type I membrane protein

Tissue Location

Present in pancreas, heart, colon, small intestine, ovary and the hippocampus, medulla oblongata and putamen of the brain Isoform 1, isoform 2, isoform 3 and isoform 4 are all expressed in the placenta throughout pregnancy.

Volume

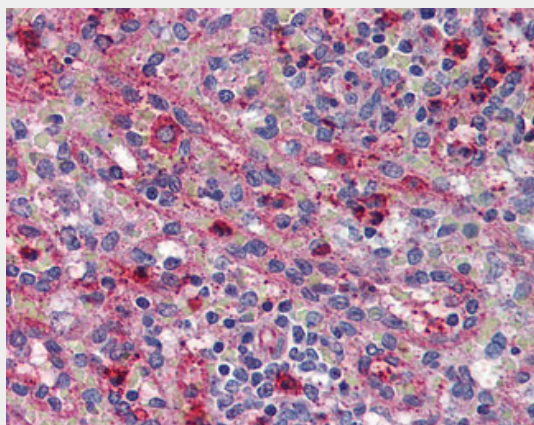
50 μ l

ACVR1C / ALK7 Antibody (Internal) - Protocols

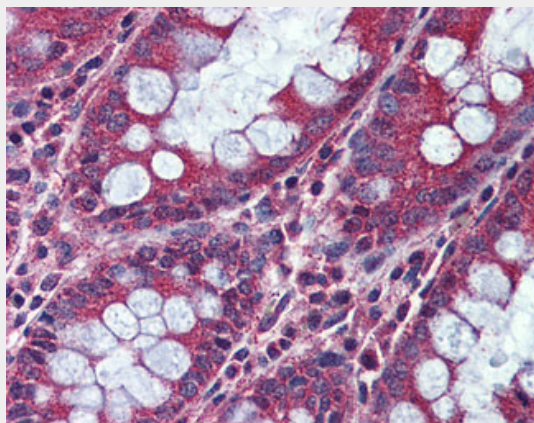
Provided below are standard protocols that you may find useful for product applications.

- [Western Blot](#)
- [Blocking Peptides](#)
- [Dot Blot](#)
- [Immunohistochemistry](#)
- [Immunofluorescence](#)
- [Immunoprecipitation](#)
- [Flow Cytometry](#)
- [Cell Culture](#)

ACVR1C / ALK7 Antibody (Internal) - Images



Anti-ACVR1C antibody ALS10885 IHC of human spleen.



Anti-ACVR1C antibody ALS10885 IHC of human colon.

ACVR1C / ALK7 Antibody (Internal) - Background

Serine/threonine protein kinase which forms a receptor complex on ligand binding. The receptor complex consisting of 2 type II and 2 type I transmembrane serine/threonine kinases. Type II receptors phosphorylate and activate type I receptors which autophosphorylate, then bind and activate SMAD transcriptional regulators, SMAD2 and SMAD3. Receptor for activin AB, activin B and NODAL. Plays a role in cell differentiation, growth arrest and apoptosis.

ACVR1C / ALK7 Antibody (Internal) - References

Bondestam J., et al. Cytogenet. Cell Genet. 95:157-162(2001).
Roberts H.J., et al. Biol. Reprod. 68:1719-1726(2003).
Hillier L.W., et al. Nature 434:724-731(2005).
Xu G., et al. J. Clin. Endocrinol. Metab. 89:5523-5534(2004).
Greenman C., et al. Nature 446:153-158(2007).