

MKP-8 / DUSP26 Antibody (C-Terminus)
Rabbit Polyclonal Antibody
Catalog # ALS10874

Specification

MKP-8 / DUSP26 Antibody (C-Terminus) - Product Information

Application	IHC
Primary Accession	O9BV47
Reactivity	Human, Rabbit, Hamster, Monkey, Pig, Horse, Bovine
Host	Rabbit
Clonality	Polyclonal
Calculated MW	24kDa KDa

MKP-8 / DUSP26 Antibody (C-Terminus) - Additional Information

Gene ID 78986

Other Names

Dual specificity protein phosphatase 26, 3.1.3.16, 3.1.3.48, Dual specificity phosphatase SKRP3, Low-molecular-mass dual-specificity phosphatase 4, DSP-4, LDP-4, Mitogen-activated protein kinase phosphatase 8, MAP kinase phosphatase 8, MKP-8, Novel amplified gene in thyroid anaplastic cancer, DUSP26, DUSP24, LDP4, MKP8, NATA1, SKRP3

Target/Specificity

Human DUSP26. BLAST analysis of the peptide immunogen showed no homology with other human proteins.

Reconstitution & Storage

Long term: -70°C; Short term: +4°C

Precautions

MKP-8 / DUSP26 Antibody (C-Terminus) is for research use only and not for use in diagnostic or therapeutic procedures.

MKP-8 / DUSP26 Antibody (C-Terminus) - Protein Information

Name DUSP26

Synonyms DUSP24, LDP4, MKP8, NATA1, SKRP3

Function

Inactivates MAPK1 and MAPK3 which leads to dephosphorylation of heat shock factor protein 4 and a reduction in its DNA-binding activity. Inhibits MAP kinase p38 by dephosphorylating it and inhibits p38-mediated apoptosis in anaplastic thyroid cancer cells. Can also induce activation of MAP kinase p38 and c-Jun N-terminal kinase (JNK).

Cellular Location

Cytoplasm. Nucleus. Golgi apparatus.

Tissue Location

Brain. In the brain it is expressed ubiquitously except in the hippocampus. Expressed in embryonal cancers (retinoblastoma, neuroepithelioma and neuroblastoma) and in anaplastic thyroid cancer.

Volume

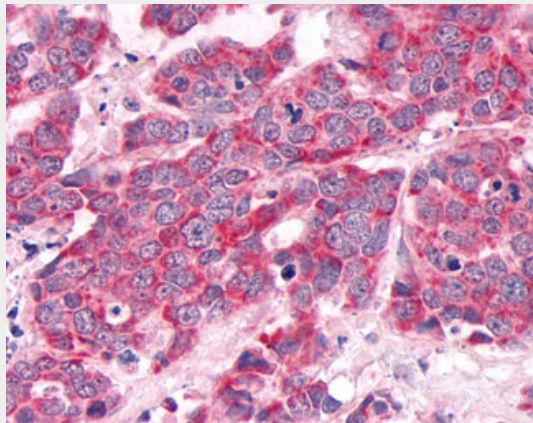
50 μ l

MKP-8 / DUSP26 Antibody (C-Terminus) - Protocols

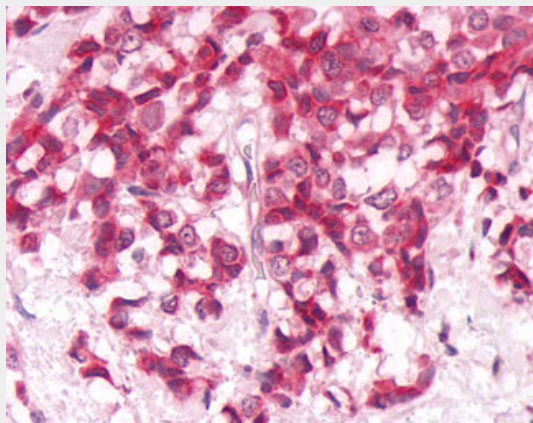
Provided below are standard protocols that you may find useful for product applications.

- [Western Blot](#)
- [Blocking Peptides](#)
- [Dot Blot](#)
- [Immunohistochemistry](#)
- [Immunofluorescence](#)
- [Immunoprecipitation](#)
- [Flow Cytometry](#)
- [Cell Culture](#)

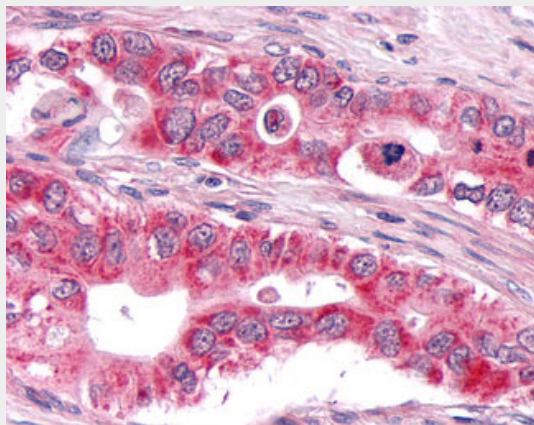
MKP-8 / DUSP26 Antibody (C-Terminus) - Images



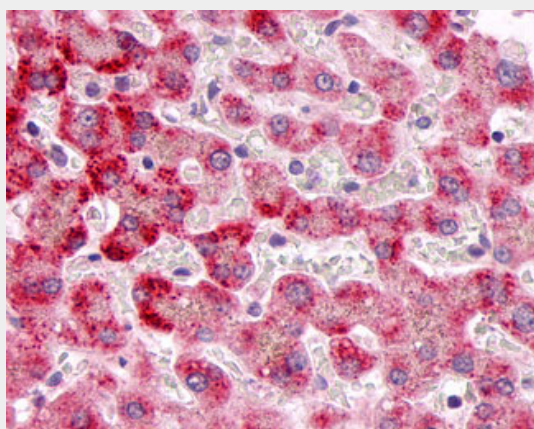
Anti-MKP-8 / DUSP26 antibody IHC of human Lung, Small Cell Carcinoma.



Anti-MKP-8 / DUSP26 antibody IHC of human Breast, Carcinoma.



Anti-MKP-8 / DUSP26 antibody IHC of human Pancreas, Carcinoma.



Anti-MKP-8 / DUSP26 antibody IHC of human liver.

MKP-8 / DUSP26 Antibody (C-Terminus) - Background

Inactivates MAPK1 and MAPK3 which leads to dephosphorylation of heat shock factor protein 4 and a reduction in its DNA-binding activity. Inhibits MAP kinase p38 by dephosphorylating it and inhibits p38-mediated apoptosis in anaplastic thyroid cancer cells. Can also induce activation of MAP kinase p38 and c-Jun N-terminal kinase (JNK).

MKP-8 / DUSP26 Antibody (C-Terminus) - References

- Vasudevan S.A., et al. *Biochem. Biophys. Res. Commun.* 330:511-518(2005).
- Yu W., et al. *Oncogene* 26:1178-1187(2007).
- Takagaki K., et al. *Mol. Cell. Biochem.* 296:177-184(2007).
- Zama T., et al. Submitted (FEB-2003) to the EMBL/GenBank/DDBJ databases.
- Ota T., et al. *Nat. Genet.* 36:40-45(2004).