

**CALCRL / CGRP Receptor Antibody (N-Terminus)**  
**Rabbit Polyclonal Antibody**  
**Catalog # ALS10872****Specification**

---

**CALCRL / CGRP Receptor Antibody (N-Terminus) - Product Information**

|                   |                        |
|-------------------|------------------------|
| Application       | IHC                    |
| Primary Accession | <a href="#">O16602</a> |
| Reactivity        | Human                  |
| Host              | Rabbit                 |
| Clonality         | Polyclonal             |
| Calculated MW     | 53kDa KDa              |

**CALCRL / CGRP Receptor Antibody (N-Terminus) - Additional Information****Gene ID** 10203**Other Names**

Calcitonin gene-related peptide type 1 receptor, CGRP type 1 receptor, Calcitonin receptor-like receptor, CALCRL, CGRPR

**Target/Specificity**

Human CALCRL. BLAST analysis of the peptide immunogen showed no homology with other human proteins.

**Reconstitution & Storage**

Long term: -70°C; Short term: +4°C

**Precautions**

CALCRL / CGRP Receptor Antibody (N-Terminus) is for research use only and not for use in diagnostic or therapeutic procedures.

**CALCRL / CGRP Receptor Antibody (N-Terminus) - Protein Information****Name** CALCRL ([HGNC:16709](#))**Synonyms** CGRPR**Function**G protein-coupled receptor which specificity is determined by its interaction with receptor-activity-modifying proteins (RAMPs) (PubMed: [32296767](http://www.uniprot.org/citations/32296767), PubMed: [33602864](http://www.uniprot.org/citations/33602864), PubMed: [8626685](http://www.uniprot.org/citations/8626685)). Together with RAMP1, form the receptor complex for calcitonin-gene-related peptides CALCA/CGRP1 and CALCB/CGRP2 (PubMed: [33602864](http://www.uniprot.org/citations/33602864)). Together with RAMP2 or RAMP3, function as receptor complexes for adrenomedullin (ADM and ADM2) (PubMed: [33602864](#)).

href="http://www.uniprot.org/citations/32296767" target="\_blank">32296767</a>, PubMed:<a href="http://www.uniprot.org/citations/9620797" target="\_blank">9620797</a>). Ligand binding causes a conformation change that triggers signaling via guanine nucleotide-binding proteins (G proteins) and modulates the activity of downstream effectors. Activates cAMP-dependent pathway (PubMed:<a href="http://www.uniprot.org/citations/32296767" target="\_blank">32296767</a>, PubMed:<a href="http://www.uniprot.org/citations/8626685" target="\_blank">8626685</a>).

#### Cellular Location

Cell membrane; Multi-pass membrane protein

#### Tissue Location

Predominantly expressed in the lung and heart.

#### Volume

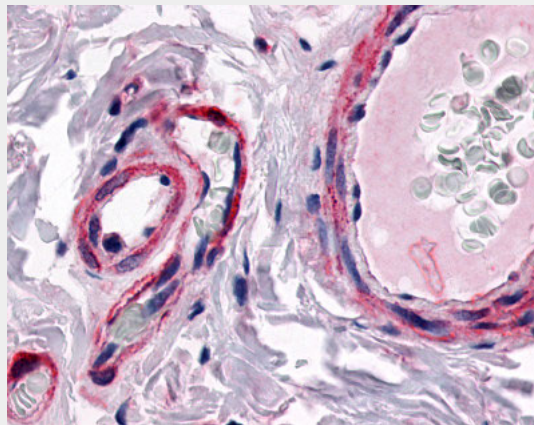
50  $\mu$ l

### CALCRL / CGRP Receptor Antibody (N-Terminus) - Protocols

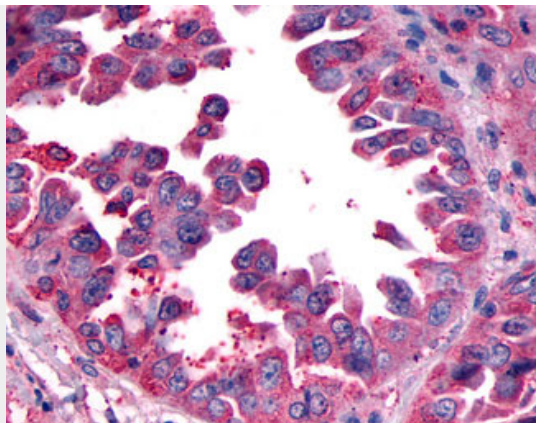
Provided below are standard protocols that you may find useful for product applications.

- [Western Blot](#)
- [Blocking Peptides](#)
- [Dot Blot](#)
- [Immunohistochemistry](#)
- [Immunofluorescence](#)
- [Immunoprecipitation](#)
- [Flow Cytometry](#)
- [Cell Culture](#)

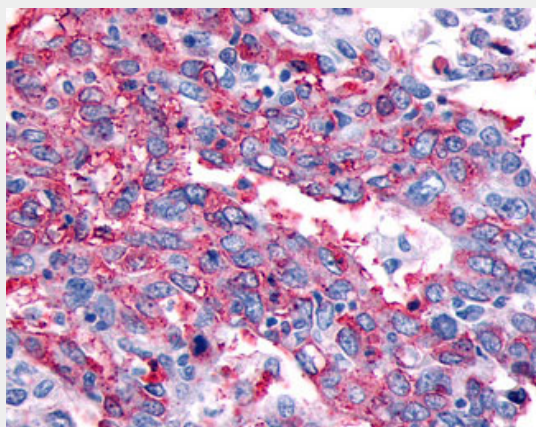
### CALCRL / CGRP Receptor Antibody (N-Terminus) - Images



Anti-CALCRL antibody ALS10872 IHC of human colon, submucosal vessels.



Anti-CALCRL / CGRP Receptor antibody IHC of human Lung, Non-Small Cell Carcinoma.



Anti-CALCRL / CGRP Receptor antibody IHC of human Ovary, Carcinoma.

#### **CALCRL / CGRP Receptor Antibody (N-Terminus) - Background**

Receptor for calcitonin-gene-related peptide (CGRP) together with RAMP1 and receptor for adrenomedullin together with RAMP3 (By similarity). Receptor for adrenomedullin together with RAMP2. The activity of this receptor is mediated by G proteins which activate adenylyl cyclase.

#### **CALCRL / CGRP Receptor Antibody (N-Terminus) - References**

- Aiyar N.,et al.J. Biol. Chem. 271:11325-11329(1996).
- Fluehmann B.,et al.Biochem. Biophys. Res. Commun. 206:341-347(1995).
- Kopatz S.A.,et al.Submitted (SEP-2003) to the EMBL/GenBank/DDBJ databases.
- Ota T.,et al.Nat. Genet. 36:40-45(2004).
- Hillier L.W.,et al.Nature 434:724-731(2005).