

**CALCRL / CGRP Receptor Antibody (Cytoplasmic Domain)
Rabbit Polyclonal Antibody
Catalog # ALS10868**

Specification

CALCRL / CGRP Receptor Antibody (Cytoplasmic Domain) - Product Information

| | |
|-------------------|---|
| Application | IHC |
| Primary Accession | Q16602 |
| Reactivity | Human, Rabbit, Hamster, Monkey, Pig, Horse, Xenopus, Bovine, Dog |
| Host | Rabbit |
| Clonality | Polyclonal |
| Calculated MW | 53kDa KDa |

CALCRL / CGRP Receptor Antibody (Cytoplasmic Domain) - Additional Information

Gene ID 10203

Other Names

Calcitonin gene-related peptide type 1 receptor, CGRP type 1 receptor, Calcitonin receptor-like receptor, CALCRL, CGRPR

Target/Specificity

Human CALCRL. BLAST analysis of the peptide immunogen showed no homology with other human proteins, except CALCRL (56%).

Reconstitution & Storage

Long term: -70°C; Short term: +4°C

Precautions

CALCRL / CGRP Receptor Antibody (Cytoplasmic Domain) is for research use only and not for use in diagnostic or therapeutic procedures.

CALCRL / CGRP Receptor Antibody (Cytoplasmic Domain) - Protein Information

Name CALCRL ([HGNC:16709](#))

Synonyms CGRPR

Function

G protein-coupled receptor which specificity is determined by its interaction with receptor-activity-modifying proteins (RAMPs) (PubMed: [32296767](http://www.uniprot.org/citations/32296767), PubMed: [33602864](http://www.uniprot.org/citations/33602864), PubMed: [8626685](http://www.uniprot.org/citations/8626685)). Together with RAMP1, form the receptor complex for calcitonin-gene-related peptides CALCA/CGRP1 and CALCB/CGRP2 (PubMed: [33602864](http://www.uniprot.org/citations/33602864)). Together with RAMP2 or RAMP3, function as receptor

complexes for adrenomedullin (ADM and ADM2) (PubMed:32296767, PubMed:9620797). Ligand binding causes a conformation change that triggers signaling via guanine nucleotide-binding proteins (G proteins) and modulates the activity of downstream effectors. Activates cAMP-dependent pathway (PubMed:32296767, PubMed:8626685).

Cellular Location

Cell membrane; Multi-pass membrane protein

Tissue Location

Predominantly expressed in the lung and heart.

Volume

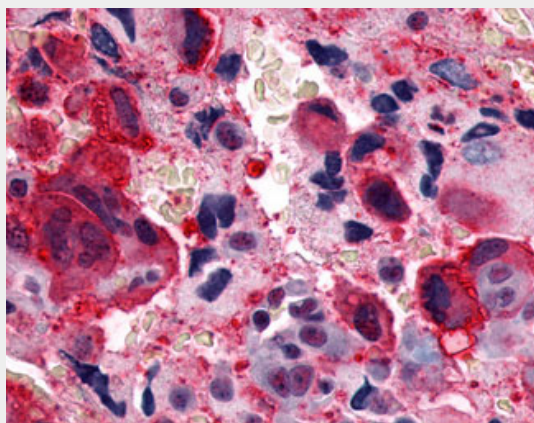
50 μ l

CALCRL / CGRP Receptor Antibody (Cytoplasmic Domain) - Protocols

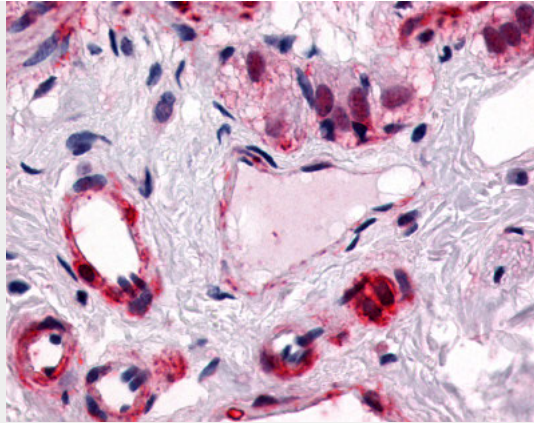
Provided below are standard protocols that you may find useful for product applications.

- [Western Blot](#)
- [Blocking Peptides](#)
- [Dot Blot](#)
- [Immunohistochemistry](#)
- [Immunofluorescence](#)
- [Immunoprecipitation](#)
- [Flow Cytometry](#)
- [Cell Culture](#)

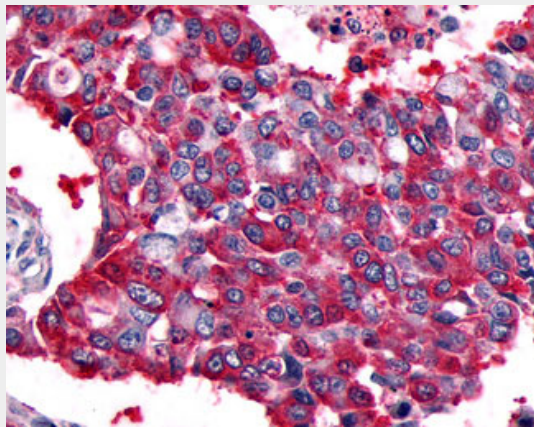
CALCRL / CGRP Receptor Antibody (Cytoplasmic Domain) - Images



Anti-CALCRL / CGRP Receptor antibody IHC of human Bone, Osteosarcoma.



Anti-CALCRL antibody ALS10868 IHC of human colon, submucosal plexus and submucosal vessels.



Anti-CALCRL / CGRP Receptor antibody IHC of human Lung, Non-Small Cell Carcinoma.

CALCRL / CGRP Receptor Antibody (Cytoplasmic Domain) - Background

Receptor for calcitonin-gene-related peptide (CGRP) together with RAMP1 and receptor for adrenomedullin together with RAMP3 (By similarity). Receptor for adrenomedullin together with RAMP2. The activity of this receptor is mediated by G proteins which activate adenylyl cyclase.

CALCRL / CGRP Receptor Antibody (Cytoplasmic Domain) - References

- Aiyar N.,et al.J. Biol. Chem. 271:11325-11329(1996).
- Fluehmann B.,et al.Biochem. Biophys. Res. Commun. 206:341-347(1995).
- Kopatz S.A.,et al.Submitted (SEP-2003) to the EMBL/GenBank/DDBJ databases.
- Ota T.,et al.Nat. Genet. 36:40-45(2004).
- Hillier L.W.,et al.Nature 434:724-731(2005).