

ESRRG / ERR Gamma Antibody (N-Terminus)
Rabbit Polyclonal Antibody
Catalog # ALS10843**Specification**

ESRRG / ERR Gamma Antibody (N-Terminus) - Product Information

Application	IHC
Primary Accession	P62508
Reactivity	Human, Mouse, Rabbit, Hamster, Monkey, Horse, Bovine, Dog
Host	Rabbit
Clonality	Polyclonal
Calculated MW	51kDa KDa

ESRRG / ERR Gamma Antibody (N-Terminus) - Additional Information**Gene ID** 2104**Other Names**

Estrogen-related receptor gamma, ERR gamma-2, Estrogen receptor-related protein 3, Nuclear receptor subfamily 3 group B member 3, ESRRG, ERR3, ERRG2, KIAA0832, NR3B3

Target/Specificity

Human ESRRG / ERR3. BLAST analysis of the peptide immunogen showed no homology with other human proteins, except ESRRB (64%).

Reconstitution & Storage

Long term: -70°C; Short term: +4°C

Precautions

ESRRG / ERR Gamma Antibody (N-Terminus) is for research use only and not for use in diagnostic or therapeutic procedures.

ESRRG / ERR Gamma Antibody (N-Terminus) - Protein Information**Name** ESRRG**Synonyms** ERR3, ERRG2, KIAA0832, NR3B3**Function**

Orphan receptor that acts as a transcription activator in the absence of bound ligand. Binds specifically to an estrogen response element and activates reporter genes controlled by estrogen response elements (By similarity). Induces the expression of PERM1 in the skeletal muscle.

Cellular Location

Nucleus.

Tissue Location

Expressed in the heart, kidney, brain, lung, bone marrow, adrenal gland, trachea, spinal cord and thyroid gland

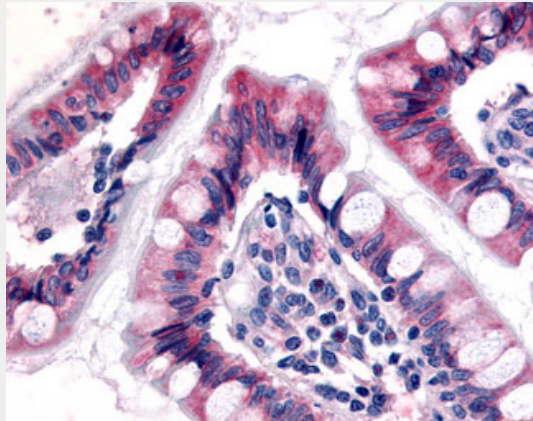
Volume

50 μ l

ESRRG / ERR Gamma Antibody (N-Terminus) - Protocols

Provided below are standard protocols that you may find useful for product applications.

- [Western Blot](#)
- [Blocking Peptides](#)
- [Dot Blot](#)
- [Immunohistochemistry](#)
- [Immunofluorescence](#)
- [Immunoprecipitation](#)
- [Flow Cytometry](#)
- [Cell Culture](#)

ESRRG / ERR Gamma Antibody (N-Terminus) - Images

Anti-ESRRG / ERR3 antibody ALS10843 IHC of human small intestine.

ESRRG / ERR Gamma Antibody (N-Terminus) - Background

Orphan receptor that acts as transcription activator in the absence of bound ligand. Binds specifically to an estrogen response element and activates reporter genes controlled by estrogen response elements (By similarity). Induces the expression of PERM1 in the skeletal muscle.

ESRRG / ERR Gamma Antibody (N-Terminus) - References

- Chen F., et al. *Gene* 228:101-109(1999).
Nagase T., et al. *DNA Res.* 5:355-364(1998).
Eudy J.D., et al. *Genomics* 50:382-384(1998).
Heard D.J., et al. *Mol. Endocrinol.* 14:382-392(2000).
Ota T., et al. *Nat. Genet.* 36:40-45(2004).