

**ESRRG / ERR Gamma Antibody (C-Terminus)**  
**Rabbit Polyclonal Antibody**  
**Catalog # ALS10832**

**Specification**

---

**ESRRG / ERR Gamma Antibody (C-Terminus) - Product Information**

Application	IHC
Primary Accession	<a href="#">P62508</a>
Reactivity	Human, Mouse, Rabbit, Hamster, Monkey, Pig, Chicken, Horse, Bovine, Dog
Host	Rabbit
Clonality	Polyclonal
Calculated MW	51kDa KDa

**ESRRG / ERR Gamma Antibody (C-Terminus) - Additional Information**

**Gene ID** 2104

**Other Names**

Estrogen-related receptor gamma, ERR gamma-2, Estrogen receptor-related protein 3, Nuclear receptor subfamily 3 group B member 3, ESRRG, ERR3, ERRG2, KIAA0832, NR3B3

**Target/Specificity**

Human ESRRG / ERR3. BLAST analysis of the peptide immunogen showed no homology with other human proteins.

**Reconstitution & Storage**

Long term: -70°C; Short term: +4°C

**Precautions**

ESRRG / ERR Gamma Antibody (C-Terminus) is for research use only and not for use in diagnostic or therapeutic procedures.

**ESRRG / ERR Gamma Antibody (C-Terminus) - Protein Information**

**Name** ESRRG

**Synonyms** ERR3, ERRG2, KIAA0832, NR3B3

**Function**

Orphan receptor that acts as a transcription activator in the absence of bound ligand. Binds specifically to an estrogen response element and activates reporter genes controlled by estrogen response elements (By similarity). Induces the expression of PERM1 in the skeletal muscle.

**Cellular Location**

Nucleus.

**Tissue Location**

Expressed in the heart, kidney, brain, lung, bone marrow, adrenal gland, trachea, spinal cord and thyroid gland

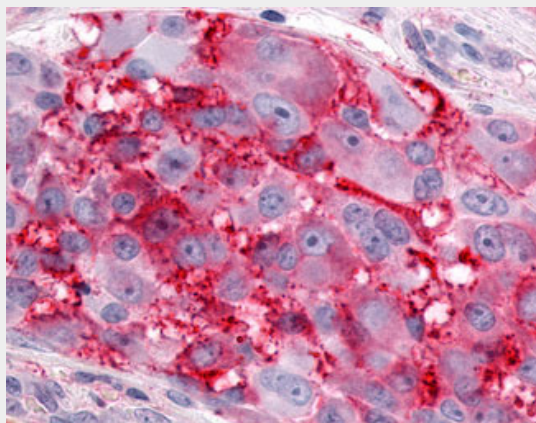
**Volume**

50  $\mu$ l

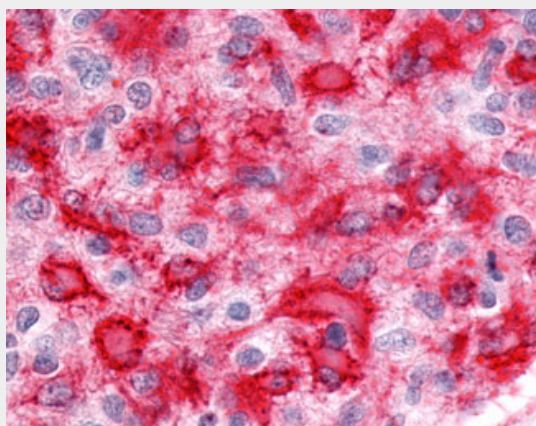
**ESRRG / ERR Gamma Antibody (C-Terminus) - Protocols**

Provided below are standard protocols that you may find useful for product applications.

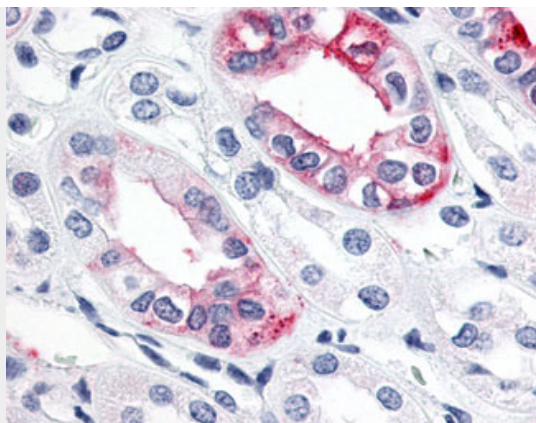
- [Western Blot](#)
- [Blocking Peptides](#)
- [Dot Blot](#)
- [Immunohistochemistry](#)
- [Immunofluorescence](#)
- [Immunoprecipitation](#)
- [Flow Cytometry](#)
- [Cell Culture](#)

**ESRRG / ERR Gamma Antibody (C-Terminus) - Images**

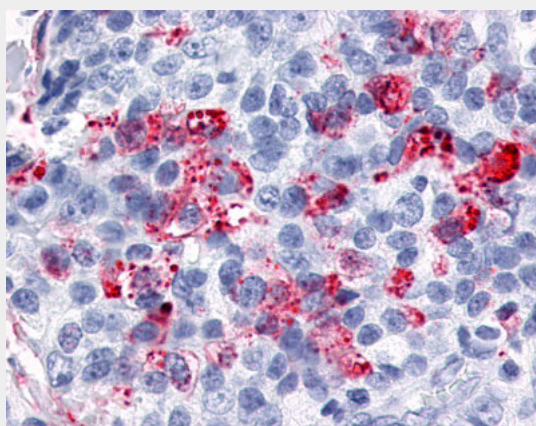
Anti-ESRRG / ERR Gamma antibody IHC of human Skin, Melanoma.



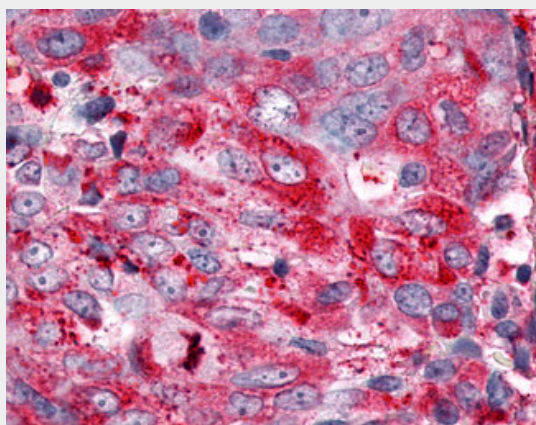
Anti-ESRRG / ERR Gamma antibody IHC of human Brain, Glioblastoma.



Anti-ESRRG / ERR Gamma antibody IHC of human kidney.



Anti-ESRRG / ERR3 antibody ALS10832 IHC of human breast cancer.



Anti-ESRRG / ERR Gamma antibody IHC of human Ovary, Carcinoma.

#### **ESRRG / ERR Gamma Antibody (C-Terminus) - Background**

Orphan receptor that acts as transcription activator in the absence of bound ligand. Binds specifically to an estrogen response element and activates reporter genes controlled by estrogen response elements (By similarity). Induces the expression of PERM1 in the skeletal muscle.

#### **ESRRG / ERR Gamma Antibody (C-Terminus) - References**

Chen F.,et al.Gene 228:101-109(1999).  
Nagase T.,et al.DNA Res. 5:355-364(1998).

Eudy J.D.,et al.Genomics 50:382-384(1998).  
Heard D.J.,et al.Mol. Endocrinol. 14:382-392(2000).  
Ota T.,et al.Nat. Genet. 36:40-45(2004).