

ESRRA / ERR Alpha Antibody (Ligand-binding Domain)
Rabbit Polyclonal Antibody
Catalog # ALS10824**Specification**

ESRRA / ERR Alpha Antibody (Ligand-binding Domain) - Product Information

Application	IHC
Primary Accession	P11474
Reactivity	Human, Mouse, Hamster, Monkey, Pig, Horse, Bovine, Dog
Host	Rabbit
Clonality	Polyclonal
Calculated MW	46kDa KDa

ESRRA / ERR Alpha Antibody (Ligand-binding Domain) - Additional Information**Gene ID** 2101**Other Names**

Steroid hormone receptor ERR1, Estrogen receptor-like 1, Estrogen-related receptor alpha, ERR-alpha, Nuclear receptor subfamily 3 group B member 1, ESRRA, ERR1, ESRL1, NR3B1

Target/Specificity

Human ESRRA. BLAST analysis of the peptide immunogen showed no homology with other human proteins, except ESRRG (60%).

Reconstitution & Storage

Long term: -70°C; Short term: +4°C

Precautions

ESRRA / ERR Alpha Antibody (Ligand-binding Domain) is for research use only and not for use in diagnostic or therapeutic procedures.

ESRRA / ERR Alpha Antibody (Ligand-binding Domain) - Protein Information**Name** ESRRA**Synonyms** ERR1, ESRL1, NR3B1**Function**

Binds to an ERR-alpha response element (ERRE) containing a single consensus half-site, 5'-TNAAGGTCA-3'. Can bind to the medium-chain acyl coenzyme A dehydrogenase (MCAD) response element NRRE-1 and may act as an important regulator of MCAD promoter. Binds to the C1 region of the lactoferrin gene promoter. Requires dimerization and the coactivator, PGC-1A, for full activity. The ERRalpha/PGC1alpha complex is a regulator of energy metabolism. Induces the expression of PERM1 in the skeletal muscle.

Cellular Location

Nucleus {ECO:0000255|PROSITE-ProRule:PRU00407, ECO:0000269|PubMed:18063693, ECO:0000269|PubMed:21190936}. Cytoplasm. Note=Co-localizes to the cytoplasm only in presence of MAPK15.

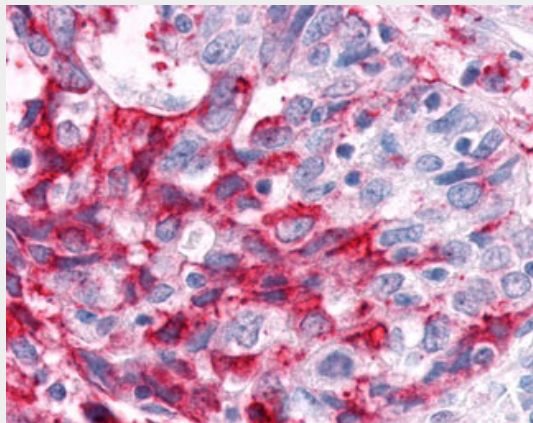
Volume
50 µl

ESRRA / ERR Alpha Antibody (Ligand-binding Domain) - Protocols

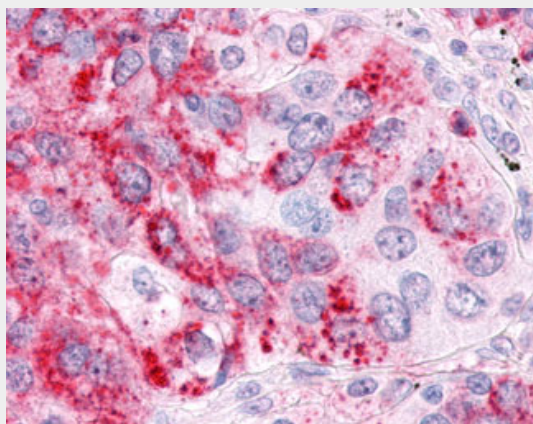
Provided below are standard protocols that you may find useful for product applications.

- [Western Blot](#)
- [Blocking Peptides](#)
- [Dot Blot](#)
- [Immunohistochemistry](#)
- [Immunofluorescence](#)
- [Immunoprecipitation](#)
- [Flow Cytometry](#)
- [Cell Culture](#)

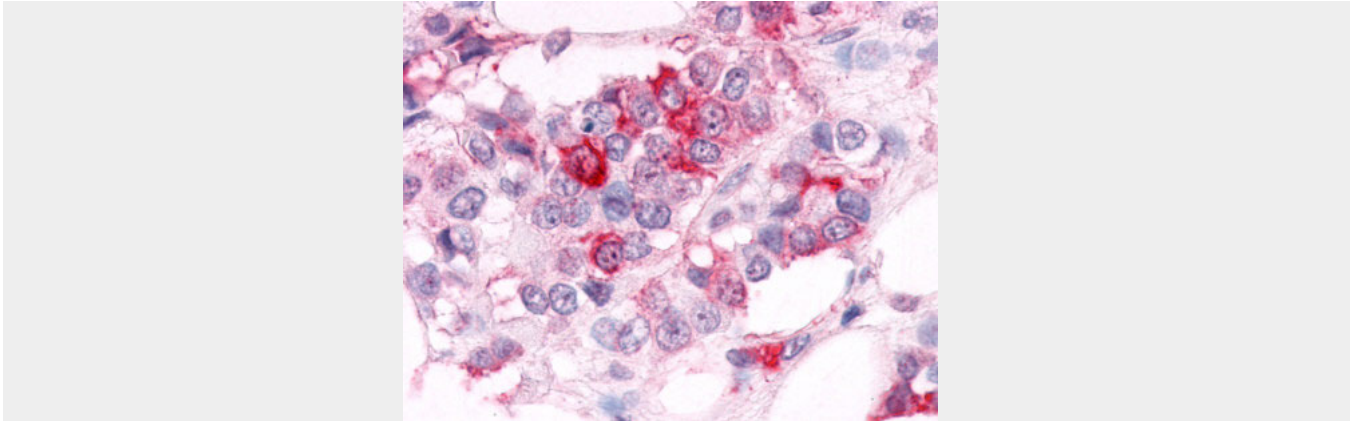
ESRRA / ERR Alpha Antibody (Ligand-binding Domain) - Images



Anti-ESRRA / ERR Alpha antibody IHC of human Ovary, Carcinoma.



Anti-ESRRA / ERR Alpha antibody IHC of human Lung, Non-Small Cell Carcinoma.



Anti-ESRRA antibody ALS10824 IHC of human breast carcinoma.

ESRRA / ERR Alpha Antibody (Ligand-binding Domain) - Background

Binds to an ERR-alpha response element (ERRE) containing a single consensus half-site, 5'-TNAAGGTCA-3'. Can bind to the medium-chain acyl coenzyme A dehydrogenase (MCAD) response element NRRE-1 and may act as an important regulator of MCAD promoter. Binds to the C1 region of the lactoferrin gene promoter. Requires dimerization and the coactivator, PGC-1A, for full activity. The ERRalpha/PGC1alpha complex is a regulator of energy metabolism. Induces the expression of PERM1 in the skeletal muscle.

ESRRA / ERR Alpha Antibody (Ligand-binding Domain) - References

- Giguere V., et al. *Nature* 331:91-94(1988).
- Yang N., et al. *J. Biol. Chem.* 271:5795-5804(1996).
- Taylor T.D., et al. *Nature* 440:497-500(2006).
- Wiley S.R., et al. *Genes Dev.* 7:2206-2219(1993).
- Sladek R., et al. *Mol. Cell. Biol.* 17:5400-5409(1997).