

GRM6 / MGLUR6 Antibody (N-Terminus)
Rabbit Polyclonal Antibody
Catalog # ALS10799

Specification

GRM6 / MGLUR6 Antibody (N-Terminus) - Product Information

Application	IHC
Primary Accession	O15303
Reactivity	Human, Monkey
Host	Rabbit
Clonality	Polyclonal
Calculated MW	95kDa KDa

GRM6 / MGLUR6 Antibody (N-Terminus) - Additional Information

Gene ID 2916

Other Names

Metabotropic glutamate receptor 6, mGluR6, GRM6, GPRC1F, MGLUR6

Target/Specificity

Human GRM6 / MGLUR6. BLAST analysis of the peptide immunogen showed no homology with other human proteins.

Reconstitution & Storage

Long term: -70°C; Short term: +4°C

Precautions

GRM6 / MGLUR6 Antibody (N-Terminus) is for research use only and not for use in diagnostic or therapeutic procedures.

GRM6 / MGLUR6 Antibody (N-Terminus) - Protein Information

Name GRM6

Synonyms GPRC1F, MGLUR6

Function

G-protein coupled receptor for glutamate. Ligand binding causes a conformation change that triggers signaling via guanine nucleotide-binding proteins (G proteins) and modulates the activity of down-stream effectors, such as adenylate cyclase. Signaling inhibits adenylate cyclase activity (By similarity). Signaling stimulates TRPM1 channel activity and Ca(2+) uptake. Required for normal vision.

Cellular Location

Cell membrane; Multi-pass membrane protein. Endoplasmic reticulum membrane; Multi-pass membrane protein. Golgi apparatus membrane; Multi-pass membrane protein. Cell projection, dendrite Note=Subject to trafficking from the endoplasmic reticulum to the Golgi apparatus and

then to the cell membrane

Tissue Location

Detected in melanocytes.

Volume

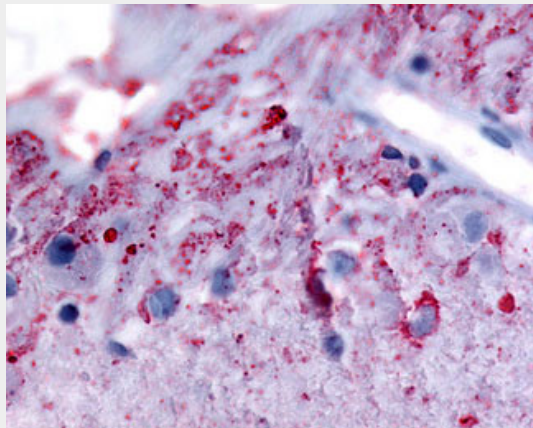
50 μ l

GRM6 / MGLUR6 Antibody (N-Terminus) - Protocols

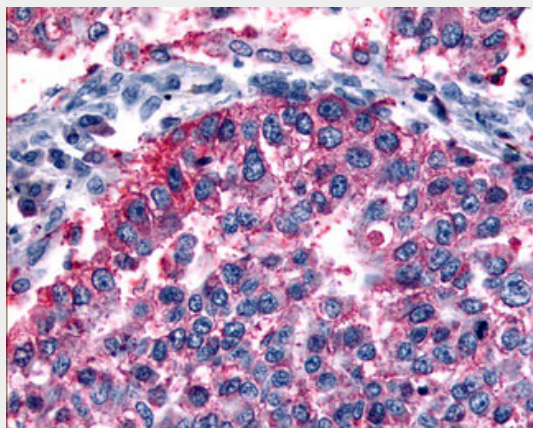
Provided below are standard protocols that you may find useful for product applications.

- [Western Blot](#)
- [Blocking Peptides](#)
- [Dot Blot](#)
- [Immunohistochemistry](#)
- [Immunofluorescence](#)
- [Immunoprecipitation](#)
- [Flow Cytometry](#)
- [Cell Culture](#)

GRM6 / MGLUR6 Antibody (N-Terminus) - Images



Anti-GRM6 / MGLUR6 antibody ALS10799 IHC of human eye, ganglion cells.



Anti-GRM6 / MGLUR6 antibody IHC of human Lung, Non-Small Cell Carcinoma.

GRM6 / MGLUR6 Antibody (N-Terminus) - Background

G-protein coupled receptor for glutamate. Ligand binding causes a conformation change that triggers signaling via guanine nucleotide-binding proteins (G proteins) and modulates the activity of down-stream effectors, such as adenylate cyclase. Signaling inhibits adenylate cyclase activity (By similarity). Signaling stimulates TRPM1 channel activity and Ca(2+) uptake. Required for normal vision.

GRM6 / MGLUR6 Antibody (N-Terminus) - References

Hashimoto T.,et al.Eur. J. Neurosci. 9:1226-1235(1997).
Schmutz J.,et al.Nature 431:268-274(2004).
Devi S.,et al.Pigment Cell Melanoma Res. 26:348-356(2013).
Dryja T.P.,et al.Proc. Natl. Acad. Sci. U.S.A. 102:4884-4889(2005).
Sjoebloom T.,et al.Science 314:268-274(2006).