

P2Y13 / P2RY13 Antibody (N-Terminus)
Rabbit Polyclonal Antibody
Catalog # ALS10783

Specification

P2Y13 / P2RY13 Antibody (N-Terminus) - Product Information

Application	IHC
Primary Accession	O9BPV8
Reactivity	Human
Host	Rabbit
Clonality	Polyclonal
Calculated MW	41kDa KDa

P2Y13 / P2RY13 Antibody (N-Terminus) - Additional Information

Gene ID 53829

Other Names

P2Y purinoceptor 13, P2Y13, G-protein coupled receptor 86, G-protein coupled receptor 94, P2RY13, GPR86, GPR94

Target/Specificity

Human P2RY13 / P2Y13. BLAST analysis of the peptide immunogen showed no homology with other human proteins.

Reconstitution & Storage

Long term: -70°C; Short term: +4°C

Precautions

P2Y13 / P2RY13 Antibody (N-Terminus) is for research use only and not for use in diagnostic or therapeutic procedures.

P2Y13 / P2RY13 Antibody (N-Terminus) - Protein Information

Name P2RY13

Synonyms GPR86, GPR94

Function

Receptor for ADP. Coupled to G(i)-proteins. May play a role in hematopoiesis and the immune system.

Cellular Location

Cell membrane; Multi-pass membrane protein.

Tissue Location

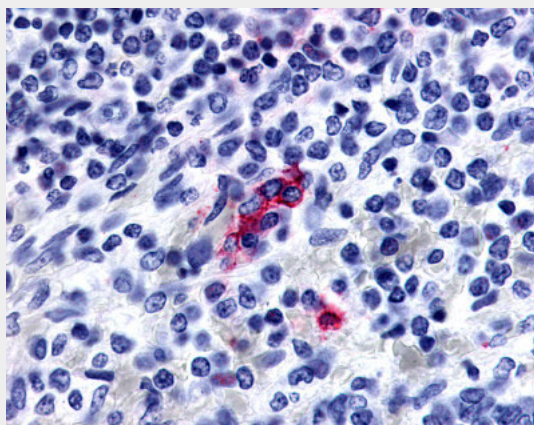
Strong expression in spleen and adult brain. Lower expression in placenta, lung, liver, spinal cord, thymus, small intestine, uterus, stomach, testis, fetal brain, and adrenal gland. Not detected in

pancreas, heart, kidney, skeletal muscle, ovary or fetal aorta. Clearly detected in lymph node and bone marrow, weakly detected in peripheral blood mononuclear cells (PBMC) and in peripheral blood leukocytes (PBL), but not detected in polymorphonuclear cells (PMN). In the brain, detected in all brain regions examined

Volume50 μ l**P2Y13 / P2RY13 Antibody (N-Terminus) - Protocols**

Provided below are standard protocols that you may find useful for product applications.

- [Western Blot](#)
- [Blocking Peptides](#)
- [Dot Blot](#)
- [Immunohistochemistry](#)
- [Immunofluorescence](#)
- [Immunoprecipitation](#)
- [Flow Cytometry](#)
- [Cell Culture](#)

P2Y13 / P2RY13 Antibody (N-Terminus) - Images

Anti-P2RY13 / P2Y13 antibody ALS10783 IHC of human spleen.

P2Y13 / P2RY13 Antibody (N-Terminus) - Background

Receptor for ADP. Coupled to G(i)-proteins. May play a role in hematopoiesis and the immune system.

P2Y13 / P2RY13 Antibody (N-Terminus) - References

Lee D.K., et al. *Gene* 275:83-91(2001).
Communi D., et al. *J. Biol. Chem.* 276:41479-41485(2001).
Wittenberger T., et al. *J. Mol. Biol.* 307:799-813(2001).
Wang Y.-G., et al. Submitted (FEB-2001) to the EMBL/GenBank/DDBJ databases.
Takeda S., et al. *FEBS Lett.* 520:97-101(2002).