

**GRM6 / MGLUR6 Antibody (N-Terminus)**  
**Rabbit Polyclonal Antibody**  
**Catalog # ALS10777**

**Specification**

---

**GRM6 / MGLUR6 Antibody (N-Terminus) - Product Information**

Application	IHC
Primary Accession	<a href="#">O15303</a>
Reactivity	Human, Mouse, Rabbit, Hamster, Monkey, Pig, Bovine, Dog
Host	Rabbit
Clonality	Polyclonal
Calculated MW	95kDa KDa

**GRM6 / MGLUR6 Antibody (N-Terminus) - Additional Information**

**Gene ID** 2916

**Other Names**

Metabotropic glutamate receptor 6, mGluR6, GRM6, GPRC1F, MGLUR6

**Target/Specificity**

Human GRM6 / MGLUR6. BLAST analysis of the peptide immunogen showed no homology with other human proteins, except GRM7 (73%), GRM4 (67%).

**Reconstitution & Storage**

Long term: -70°C; Short term: +4°C

**Precautions**

GRM6 / MGLUR6 Antibody (N-Terminus) is for research use only and not for use in diagnostic or therapeutic procedures.

**GRM6 / MGLUR6 Antibody (N-Terminus) - Protein Information**

**Name** GRM6

**Synonyms** GPRC1F, MGLUR6

**Function**

G-protein coupled receptor for glutamate. Ligand binding causes a conformation change that triggers signaling via guanine nucleotide-binding proteins (G proteins) and modulates the activity of down-stream effectors, such as adenylate cyclase. Signaling inhibits adenylate cyclase activity (By similarity). Signaling stimulates TRPM1 channel activity and Ca(2+) uptake. Required for normal vision.

**Cellular Location**

Cell membrane; Multi-pass membrane protein. Endoplasmic reticulum membrane; Multi-pass membrane protein. Golgi apparatus membrane; Multi-pass membrane protein. Cell projection,

dendrite Note=Subject to trafficking from the endoplasmic reticulum to the Golgi apparatus and then to the cell membrane

**Tissue Location**

Detected in melanocytes.

**Volume**

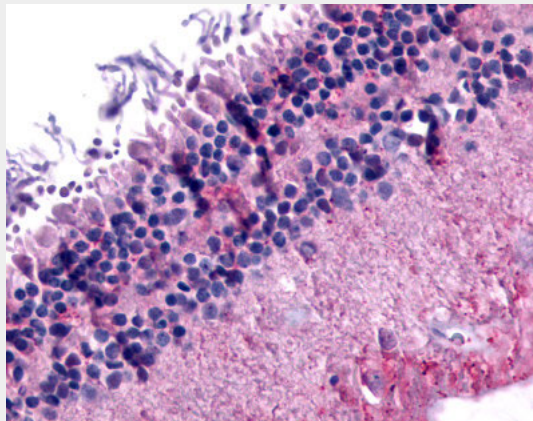
50  $\mu$ l

**GRM6 / MGLUR6 Antibody (N-Terminus) - Protocols**

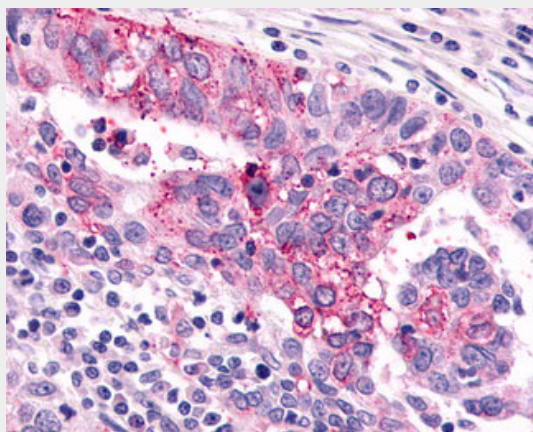
Provided below are standard protocols that you may find useful for product applications.

- [Western Blot](#)
- [Blocking Peptides](#)
- [Dot Blot](#)
- [Immunohistochemistry](#)
- [Immunofluorescence](#)
- [Immunoprecipitation](#)
- [Flow Cytometry](#)
- [Cell Culture](#)

**GRM6 / MGLUR6 Antibody (N-Terminus) - Images**



Anti-GRM6 / MGLUR6 antibody ALS10777 IHC of human eye, retina.



Anti-GRM6 / MGLUR6 antibody IHC of human Ovary, Carcinoma.

**GRM6 / MGLUR6 Antibody (N-Terminus) - Background**

G-protein coupled receptor for glutamate. Ligand binding causes a conformation change that triggers signaling via guanine nucleotide-binding proteins (G proteins) and modulates the activity of down-stream effectors, such as adenylate cyclase. Signaling inhibits adenylate cyclase activity (By similarity). Signaling stimulates TRPM1 channel activity and Ca(2+) uptake. Required for normal vision.

**GRM6 / MGLUR6 Antibody (N-Terminus) - References**

Hashimoto T.,et al.Eur. J. Neurosci. 9:1226-1235(1997).  
Schmutz J.,et al.Nature 431:268-274(2004).  
Devi S.,et al.Pigment Cell Melanoma Res. 26:348-356(2013).  
Dryja T.P.,et al.Proc. Natl. Acad. Sci. U.S.A. 102:4884-4889(2005).  
Sjoebloom T.,et al.Science 314:268-274(2006).