

GALR2 / Galanin Receptor 2 Antibody (Transmembrane Domain)
Rabbit Polyclonal Antibody
Catalog # ALS10742

Specification

GALR2 / Galanin Receptor 2 Antibody (Transmembrane Domain) - Product Information

Application	IHC
Primary Accession	O43603
Reactivity	Human
Host	Rabbit
Clonality	Polyclonal
Calculated MW	42kDa KDa

GALR2 / Galanin Receptor 2 Antibody (Transmembrane Domain) - Additional Information

Gene ID 8811

Other Names

Galanin receptor type 2, GAL2-R, GALR-2, GALR2, GALNR2

Target/Specificity

Human GALR2. BLAST analysis of the peptide immunogen showed no homology with other human proteins.

Reconstitution & Storage

Long term: -70°C; Short term: +4°C

Precautions

GALR2 / Galanin Receptor 2 Antibody (Transmembrane Domain) is for research use only and not for use in diagnostic or therapeutic procedures.

GALR2 / Galanin Receptor 2 Antibody (Transmembrane Domain) - Protein Information

Name GALR2

Synonyms GALNR2

Function

Receptor for the hormone galanin and GALP. Receptor for the hormone spexin-1 (PubMed:24517231). The activity of this receptor is mediated by G proteins that activate the phospholipase C/protein kinase C pathway (via G(q)) and that inhibit adenylyl cyclase (via G(i)).

Cellular Location

Cell membrane; Multi-pass membrane protein.

Tissue Location

Expressed abundantly within the central nervous system in both hypothalamus and hippocampus.

In peripheral tissues, the strongest expression was observed in heart, kidney, liver, and small intestine

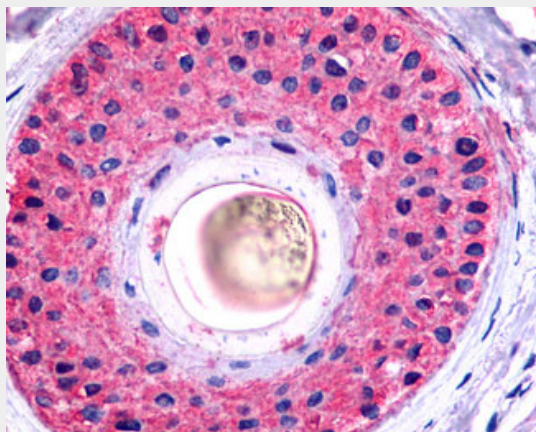
Volume
50 μ l

GALR2 / Galanin Receptor 2 Antibody (Transmembrane Domain) - Protocols

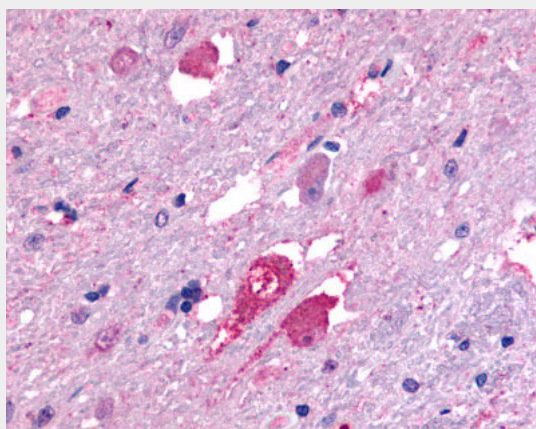
Provided below are standard protocols that you may find useful for product applications.

- [Western Blot](#)
- [Blocking Peptides](#)
- [Dot Blot](#)
- [Immunohistochemistry](#)
- [Immunofluorescence](#)
- [Immunoprecipitation](#)
- [Flow Cytometry](#)
- [Cell Culture](#)

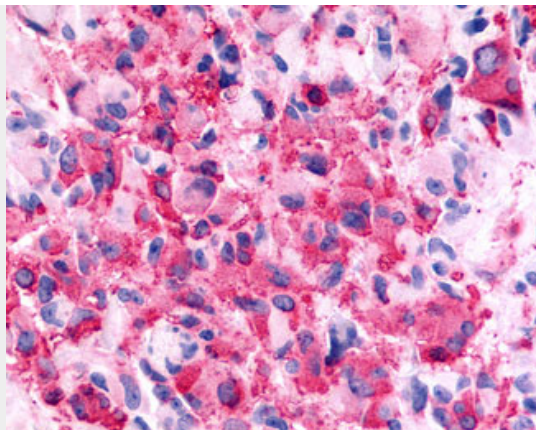
GALR2 / Galanin Receptor 2 Antibody (Transmembrane Domain) - Images



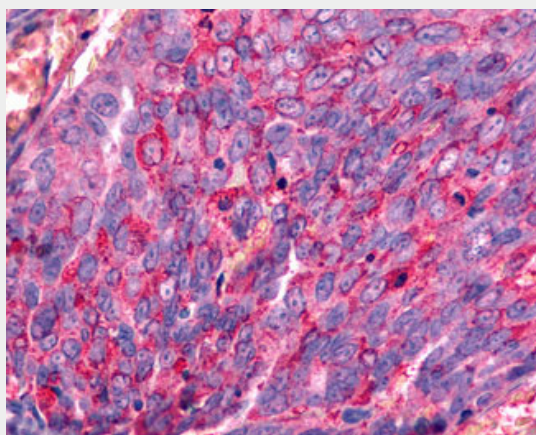
Anti-GALR2 / Galanin Receptor 2 antibody IHC of human skin hair follicle.



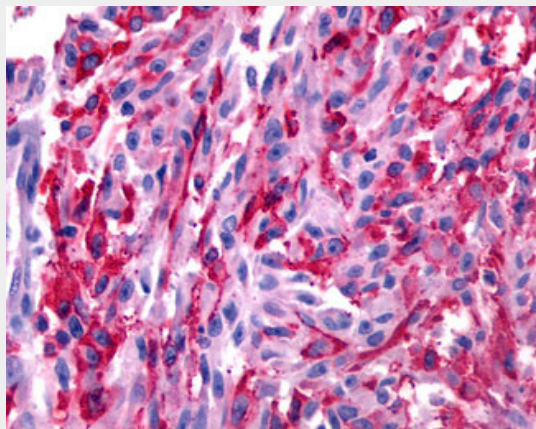
Anti-GALR2 antibody ALS10742 IHC of human brain, neurons and glia.



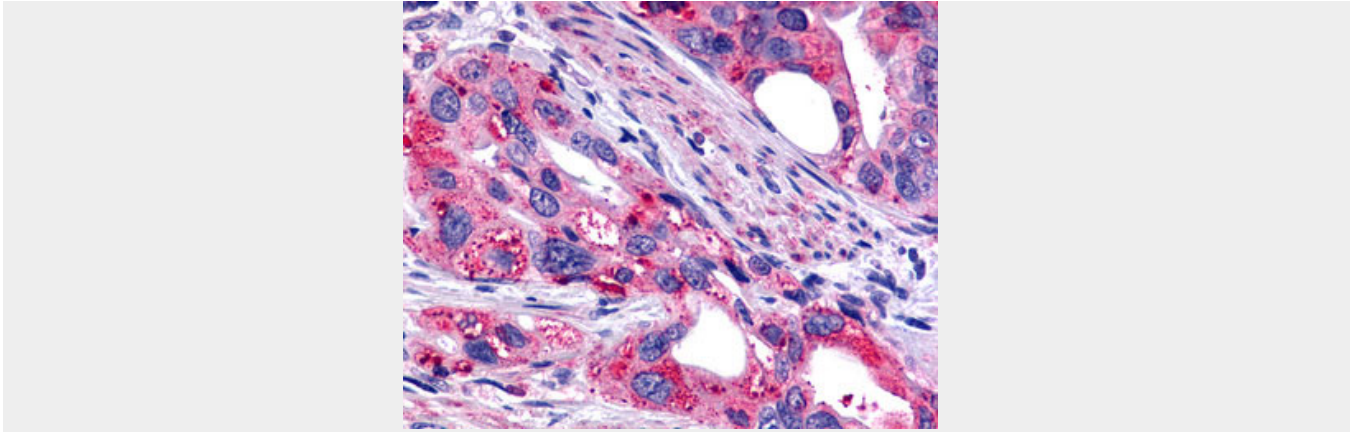
Anti-GALR2 / Galanin Receptor 2 antibody IHC of human Brain, Glioblastoma.



Anti-GALR2 / Galanin Receptor 2 antibody IHC of human Ovary, Carcinoma.



Anti-GALR2 / Galanin Receptor 2 antibody IHC of human skin, melanoma.



Anti-GALR2 / Galanin Receptor 2 antibody IHC of human Pancreas, Carcinoma.

GALR2 / Galanin Receptor 2 Antibody (Transmembrane Domain) - Background

Receptor for the hormone galanin and GALP. Receptor for the hormone spexin-1 (PubMed:24517231). The activity of this receptor is mediated by G proteins that activate the phospholipase C/protein kinase C pathway (via G(q)) and that inhibit adenylyl cyclase (via G(i)).

GALR2 / Galanin Receptor 2 Antibody (Transmembrane Domain) - References

Bloomquist B.T.,et al.Biochem. Biophys. Res. Commun. 243:474-479(1998).
Borowsky B.,et al.Peptides 19:1771-1781(1998).
Fathi Z.,et al.Brain Res. Mol. Brain Res. 58:156-169(1998).
Kolakowski L.F. Jr.,et al.J. Neurochem. 71:2239-2251(1998).
Martin A.L.,et al.Submitted (APR-2007) to the EMBL/GenBank/DDBJ databases.