

EDNRA / Endothelin A Receptor Antibody (Extracellular Domain)
Rabbit Polyclonal Antibody
Catalog # ALS10726

Specification

EDNRA / Endothelin A Receptor Antibody (Extracellular Domain) - Product Information

Application	IHC
Primary Accession	P25101
Reactivity	Human, Monkey
Host	Rabbit
Clonality	Polyclonal
Calculated MW	49kDa KDa

EDNRA / Endothelin A Receptor Antibody (Extracellular Domain) - Additional Information

Gene ID 1909

Other Names

Endothelin-1 receptor, Endothelin A receptor, ET-A, ETA-R, hET-AR, EDNRA, ETA, ETRA

Target/Specificity

Human Endothelin A Receptor. BLAST analysis of the peptide immunogen showed no homology with other human proteins, except EDNRB (72%).

Reconstitution & Storage

Long term: -70°C; Short term: +4°C

Precautions

EDNRA / Endothelin A Receptor Antibody (Extracellular Domain) is for research use only and not for use in diagnostic or therapeutic procedures.

EDNRA / Endothelin A Receptor Antibody (Extracellular Domain) - Protein Information

Name EDNRA ([HGNC:3179](#))

Synonyms ETA, ETRA

Function

Receptor for endothelin-1. Mediates its action by association with G proteins that activate a phosphatidylinositol-calcium second messenger system. The rank order of binding affinities for ET-A is: ET1 > ET2 >> ET3.

Cellular Location

Cell membrane; Multi-pass membrane protein.

Tissue Location

Isoform 1, isoform 3 and isoform 4 are expressed in a variety of tissues, with highest levels in the aorta and cerebellum, followed by lung, atrium and cerebral cortex, lower levels in the placenta,

kidney, adrenal gland, duodenum, colon, ventricle and liver but no expression in umbilical vein endothelial cells. Within the placenta, isoform 1, isoform 2, isoform 3 and isoform 4 are expressed in the villi and stem villi vessels.

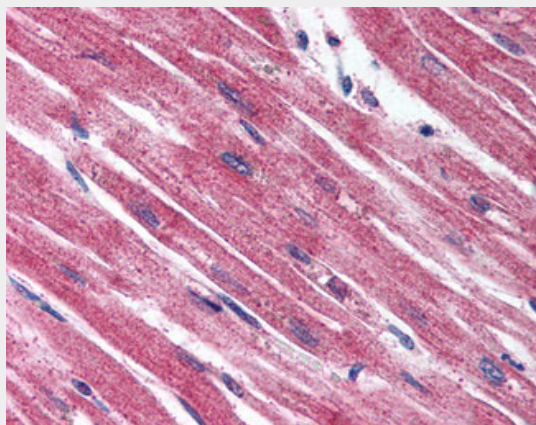
Volume
50 μ l

EDNRA / Endothelin A Receptor Antibody (Extracellular Domain) - Protocols

Provided below are standard protocols that you may find useful for product applications.

- [Western Blot](#)
- [Blocking Peptides](#)
- [Dot Blot](#)
- [Immunohistochemistry](#)
- [Immunofluorescence](#)
- [Immunoprecipitation](#)
- [Flow Cytometry](#)
- [Cell Culture](#)

EDNRA / Endothelin A Receptor Antibody (Extracellular Domain) - Images



Anti-Endothelin A Receptor antibody ALS10726 IHC of human heart.

EDNRA / Endothelin A Receptor Antibody (Extracellular Domain) - Background

Receptor for endothelin-1. Mediates its action by association with G proteins that activate a phosphatidylinositol- calcium second messenger system. The rank order of binding affinities for ET-A is: ET1 > ET2 >> ET3.

EDNRA / Endothelin A Receptor Antibody (Extracellular Domain) - References

Adachi M., et al. *Biochem. Biophys. Res. Commun.* 180:1265-1272(1991).
Cyr C., et al. *Biochem. Biophys. Res. Commun.* 181:184-190(1991).
Hosoda K., et al. *FEBS Lett.* 287:23-26(1991).
Arai H., et al. *Jpn. Circ. J.* 56:1303-1307(1992).
Elshourbagy N.A., et al. *J. Biol. Chem.* 268:3873-3879(1993).