

**GPR182 / ADMR Antibody (C-Terminus)**  
**Rabbit Polyclonal Antibody**  
**Catalog # ALS10720**

**Specification**

---

**GPR182 / ADMR Antibody (C-Terminus) - Product Information**

Application	IHC
Primary Accession	<a href="#">O15218</a>
Reactivity	Human, Monkey
Host	Rabbit
Clonality	Polyclonal
Calculated MW	45kDa KDa

**GPR182 / ADMR Antibody (C-Terminus) - Additional Information**

**Gene ID** 11318

**Other Names**

G-protein coupled receptor 182, GPR182, ADMR

**Target/Specificity**

Human GPR182 / ADMR. BLAST analysis of the peptide immunogen showed no homology with other human proteins.

**Reconstitution & Storage**

Long term: -70°C; Short term: +4°C

**Precautions**

GPR182 / ADMR Antibody (C-Terminus) is for research use only and not for use in diagnostic or therapeutic procedures.

**GPR182 / ADMR Antibody (C-Terminus) - Protein Information**

**Name** GPR182

**Synonyms** ADMR

**Function**

Orphan receptor.

**Cellular Location**

Cell membrane; Multi-pass membrane protein.

**Tissue Location**

Highly expressed in heart, skeletal muscle, immune system, adrenal gland and liver.

**Volume**

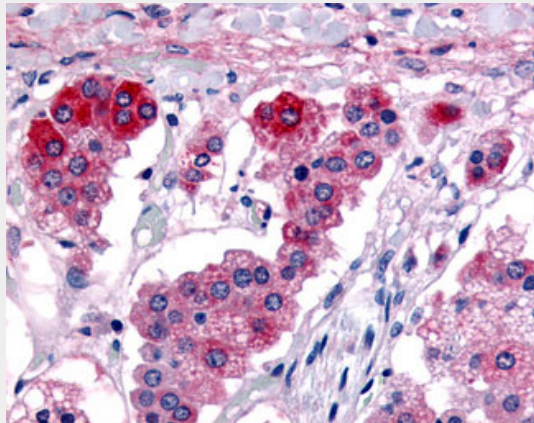
50 µl

## GPR182 / ADMR Antibody (C-Terminus) - Protocols

Provided below are standard protocols that you may find useful for product applications.

- [Western Blot](#)
- [Blocking Peptides](#)
- [Dot Blot](#)
- [Immunohistochemistry](#)
- [Immunofluorescence](#)
- [Immunoprecipitation](#)
- [Flow Cytometry](#)
- [Cell Culture](#)

## GPR182 / ADMR Antibody (C-Terminus) - Images



Anti-GPR182 / ADMR antibody ALS10720 IHC of human adrenal.

## GPR182 / ADMR Antibody (C-Terminus) - Background

Orphan receptor.

## GPR182 / ADMR Antibody (C-Terminus) - References

Haenze J., et al. *Biochem. Biophys. Res. Commun.* 240:183-188(1997).  
Kopatz S.A., et al. Submitted (APR-2003) to the EMBL/GenBank/DDBJ databases.  
Kennedy S.P., et al. *Biochem. Biophys. Res. Commun.* 244:832-837(1998).