

DRD4 / Dopamine Receptor D4 Antibody (C-Terminus)
Rabbit Polyclonal Antibody
Catalog # ALS10716**Specification****DRD4 / Dopamine Receptor D4 Antibody (C-Terminus) - Product Information**

Application	IHC
Primary Accession	P21917
Reactivity	Human, Monkey
Host	Rabbit
Clonality	Polyclonal
Calculated MW	48kDa KDa

DRD4 / Dopamine Receptor D4 Antibody (C-Terminus) - Additional Information**Gene ID** 1815**Other Names**

D(4) dopamine receptor, D(2C) dopamine receptor, Dopamine D4 receptor, DRD4

Target/Specificity

Human DRD4 / Dopamine Receptor D4. BLAST analysis of the peptide immunogen showed no homology with other human proteins, except HTR1D (65%).

Reconstitution & Storage

Long term: -70°C; Short term: +4°C

Precautions

DRD4 / Dopamine Receptor D4 Antibody (C-Terminus) is for research use only and not for use in diagnostic or therapeutic procedures.

DRD4 / Dopamine Receptor D4 Antibody (C-Terminus) - Protein Information**Name** DRD4**Function**

Dopamine receptor responsible for neuronal signaling in the mesolimbic system of the brain, an area of the brain that regulates emotion and complex behavior. Activated by dopamine, but also by epinephrine and norepinephrine, and by numerous synthetic agonists and drugs (PubMed: [16423344](http://www.uniprot.org/citations/16423344), PubMed: [27659709](http://www.uniprot.org/citations/27659709), PubMed: [29051383](http://www.uniprot.org/citations/29051383), PubMed: [9003072](http://www.uniprot.org/citations/9003072)). Agonist binding triggers signaling via G proteins that inhibit adenylyl cyclase (PubMed: [16423344](http://www.uniprot.org/citations/16423344), PubMed: [27659709](http://www.uniprot.org/citations/27659709), PubMed: [29051383](http://www.uniprot.org/citations/29051383), PubMed: [7512953](http://www.uniprot.org/citations/7512953), PubMed: [7512953](http://www.uniprot.org/citations/7512953)).

[7643093](http://www.uniprot.org/citations/7643093)). Modulates the circadian rhythm of contrast sensitivity by regulating the rhythmic expression of NPAS2 in the retinal ganglion cells (By similarity).

Cellular Location

Cell membrane; Multi-pass membrane protein

Tissue Location

Highly expressed in retina. Detected at much lower levels in brain, in amygdala, thalamus, hypothalamus, cerebellum and pituitary.

Volume

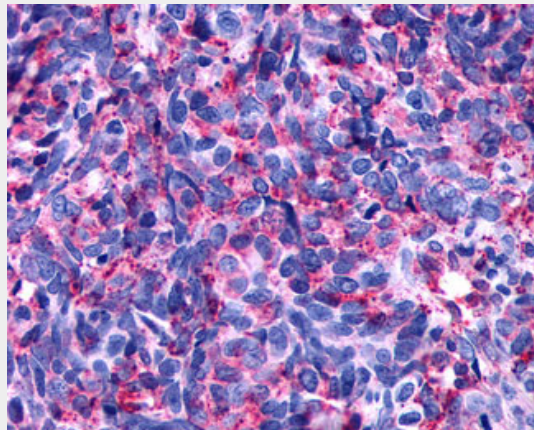
50 µl

DRD4 / Dopamine Receptor D4 Antibody (C-Terminus) - Protocols

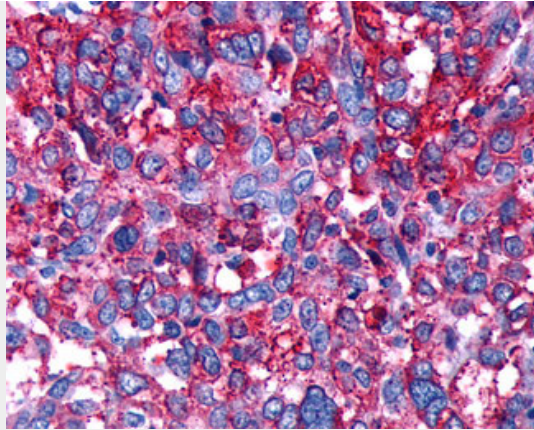
Provided below are standard protocols that you may find useful for product applications.

- [Western Blot](#)
- [Blocking Peptides](#)
- [Dot Blot](#)
- [Immunohistochemistry](#)
- [Immunofluorescence](#)
- [Immunoprecipitation](#)
- [Flow Cytometry](#)
- [Cell Culture](#)

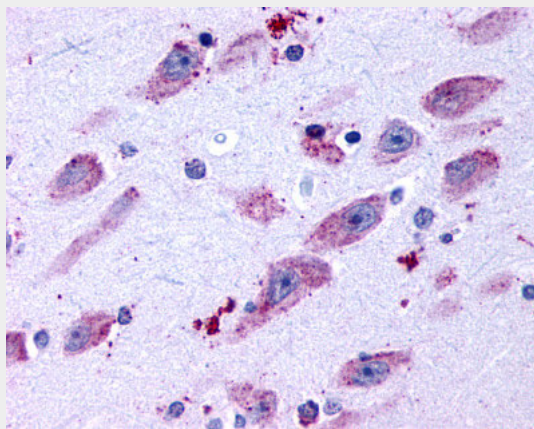
DRD4 / Dopamine Receptor D4 Antibody (C-Terminus) - Images



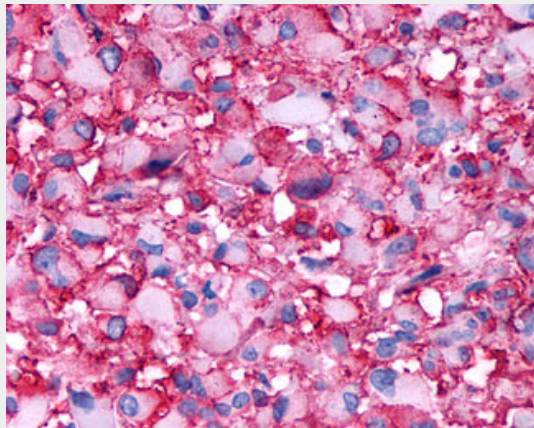
Anti-DRD4 / Dopamine Receptor D4 antibody IHC of human Lung, Small Cell Carcinoma.



Anti-DRD4 / Dopamine Receptor D4 antibody IHC of human Ovary, Carcinoma.



Anti-DRD4 / Dopamine Receptor D4 antibody ALS10716 IHC of human brain, neurons and glia.



Anti-DRD4 / Dopamine Receptor D4 antibody IHC of human Brain, Glioblastoma.

DRD4 / Dopamine Receptor D4 Antibody (C-Terminus) - Background

Dopamine receptor responsible for neuronal signaling in the mesolimbic system of the brain, an area of the brain that regulates emotion and complex behavior. Its activity is mediated by G proteins which inhibit adenylyl cyclase. Modulates the circadian rhythm of contrast sensitivity by regulating the rhythmic expression of NPAS2 in the retinal ganglion cells (By similarity).

DRD4 / Dopamine Receptor D4 Antibody (C-Terminus) - References

van Tol H.H., et al. Nature 358:149-152(1992).

van Tol H.H.M., et al. Nature 350:610-614(1991).

Suwa M., et al. Submitted (JUL-2001) to the EMBL/GenBank/DDBJ databases.

Kaighin V.A., et al. Submitted (DEC-2007) to the EMBL/GenBank/DDBJ databases.

Taylor T.D., et al. Nature 440:497-500(2006).