

**PTGER4 / EP4 Antibody (C-Terminus)**  
**Rabbit Polyclonal Antibody**  
**Catalog # ALS10712**

**Specification**

---

**PTGER4 / EP4 Antibody (C-Terminus) - Product Information**

Application	IHC, ICC
Primary Accession	<a href="#">P35408</a>
Reactivity	Human, Monkey
Host	Rabbit
Clonality	Polyclonal
Calculated MW	53kDa KDa

**PTGER4 / EP4 Antibody (C-Terminus) - Additional Information**

**Gene ID** 5734

**Other Names**

Prostaglandin E2 receptor EP4 subtype, PGE receptor EP4 subtype, PGE2 receptor EP4 subtype, Prostanoid EP4 receptor, PTGER4, PTGER2

**Target/Specificity**

Human PTGER4 / EP4. BLAST analysis of the peptide immunogen showed no homology with other human proteins.

**Reconstitution & Storage**

Long term: -70°C; Short term: +4°C

**Precautions**

PTGER4 / EP4 Antibody (C-Terminus) is for research use only and not for use in diagnostic or therapeutic procedures.

**PTGER4 / EP4 Antibody (C-Terminus) - Protein Information**

**Name** PTGER4

**Synonyms** PTGER2

**Function**

Receptor for prostaglandin E2 (PGE2). The activity of this receptor is mediated by G(s) proteins that stimulate adenylate cyclase. Has a relaxing effect on smooth muscle. May play an important role in regulating renal hemodynamics, intestinal epithelial transport, adrenal aldosterone secretion, and uterine function.

**Cellular Location**

Cell membrane; Multi-pass membrane protein.

**Tissue Location**

High in intestine and in peripheral blood mononuclear cells; low in lung, kidney, thymus, uterus, vasculature and brain. Not found in liver, heart, retina or skeletal muscle

**Volume**

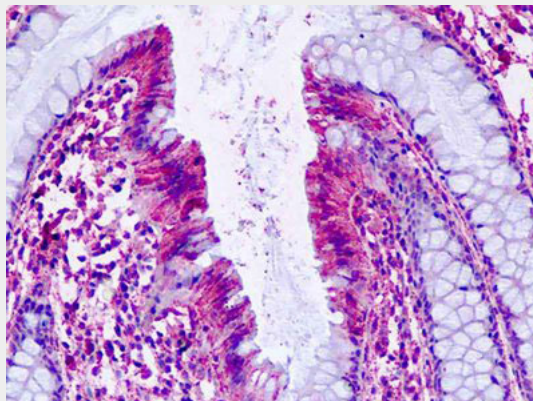
50  $\mu$ l

**PTGER4 / EP4 Antibody (C-Terminus) - Protocols**

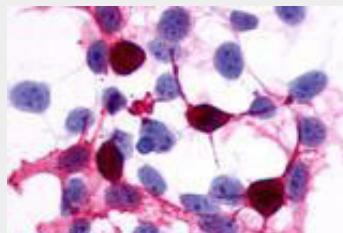
Provided below are standard protocols that you may find useful for product applications.

- [Western Blot](#)
- [Blocking Peptides](#)
- [Dot Blot](#)
- [Immunohistochemistry](#)
- [Immunofluorescence](#)
- [Immunoprecipitation](#)
- [Flow Cytometry](#)
- [Cell Culture](#)

**PTGER4 / EP4 Antibody (C-Terminus) - Images**



Human, Colon: Formalin-Fixed Paraffin-Embedded (FFPE)



**PTGER4 / EP4 Antibody (C-Terminus) - Background**

Receptor for prostaglandin E2 (PGE2). The activity of this receptor is mediated by G(s) proteins that stimulate adenylate cyclase. Has a relaxing effect on smooth muscle. May play an important role in regulating renal hemodynamics, intestinal epithelial transport, adrenal aldosterone secretion, and uterine function.

**PTGER4 / EP4 Antibody (C-Terminus) - References**

Bastien L., et al. J. Biol. Chem. 269:11873-11877(1994).  
An S., et al. Biochem. Biophys. Res. Commun. 197:263-270(1993).  
Foord S.M., et al. Genomics 35:182-188(1996).  
Mori K., et al. J. Mol. Med. 74:333-336(1996).  
Kopatz S.A., et al. Submitted (OCT-2003) to the EMBL/GenBank/DDBJ databases.