

PTGER4 / EP4 Antibody (C-Terminus)
Rabbit Polyclonal Antibody
Catalog # ALS10711

Specification

PTGER4 / EP4 Antibody (C-Terminus) - Product Information

Application	IHC
Primary Accession	P35408
Reactivity	Human, Monkey, Bovine
Host	Rabbit
Clonality	Polyclonal
Calculated MW	53kDa KDa

PTGER4 / EP4 Antibody (C-Terminus) - Additional Information

Gene ID 5734

Other Names

Prostaglandin E2 receptor EP4 subtype, PGE receptor EP4 subtype, PGE2 receptor EP4 subtype, Prostanoid EP4 receptor, PTGER4, PTGER2

Target/Specificity

Human PTGER4 / EP4. BLAST analysis of the peptide immunogen showed no homology with other human proteins.

Reconstitution & Storage

Long term: -70°C; Short term: +4°C

Precautions

PTGER4 / EP4 Antibody (C-Terminus) is for research use only and not for use in diagnostic or therapeutic procedures.

PTGER4 / EP4 Antibody (C-Terminus) - Protein Information

Name PTGER4

Synonyms PTGER2

Function

Receptor for prostaglandin E2 (PGE2). The activity of this receptor is mediated by G(s) proteins that stimulate adenylate cyclase. Has a relaxing effect on smooth muscle. May play an important role in regulating renal hemodynamics, intestinal epithelial transport, adrenal aldosterone secretion, and uterine function.

Cellular Location

Cell membrane; Multi-pass membrane protein.

Tissue Location

High in intestine and in peripheral blood mononuclear cells; low in lung, kidney, thymus, uterus, vasculature and brain. Not found in liver, heart, retina or skeletal muscle

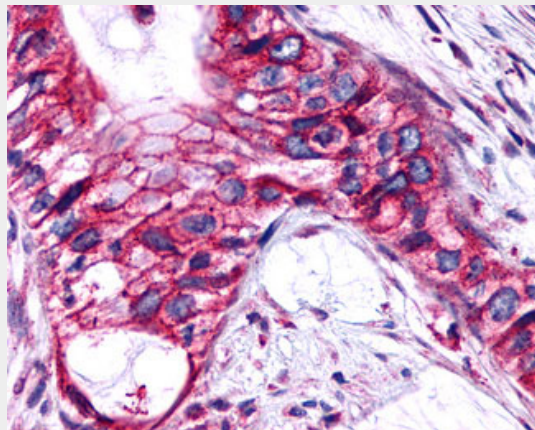
Volume
50 μ l

PTGER4 / EP4 Antibody (C-Terminus) - Protocols

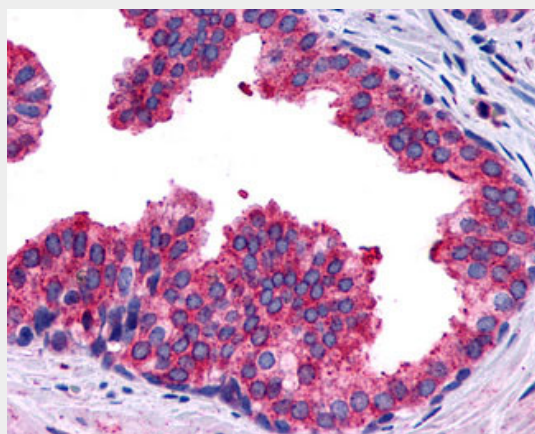
Provided below are standard protocols that you may find useful for product applications.

- [Western Blot](#)
- [Blocking Peptides](#)
- [Dot Blot](#)
- [Immunohistochemistry](#)
- [Immunofluorescence](#)
- [Immunoprecipitation](#)
- [Flow Cytometry](#)
- [Cell Culture](#)

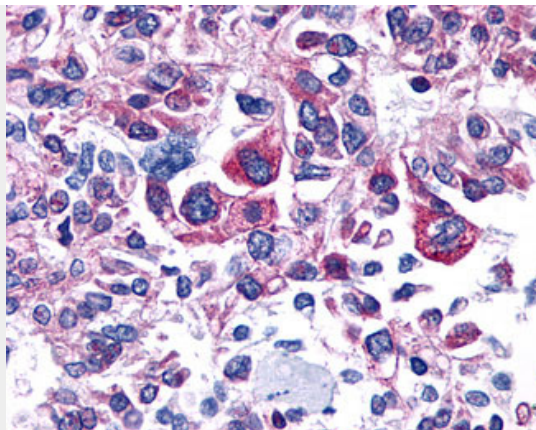
PTGER4 / EP4 Antibody (C-Terminus) - Images



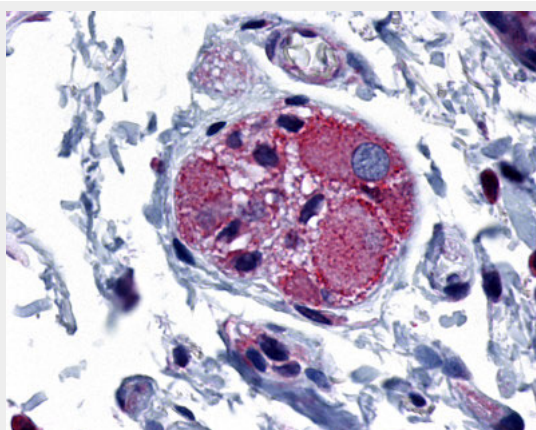
Anti-PTGER4 / EP4 antibody IHC of human Pancreas, Carcinoma.



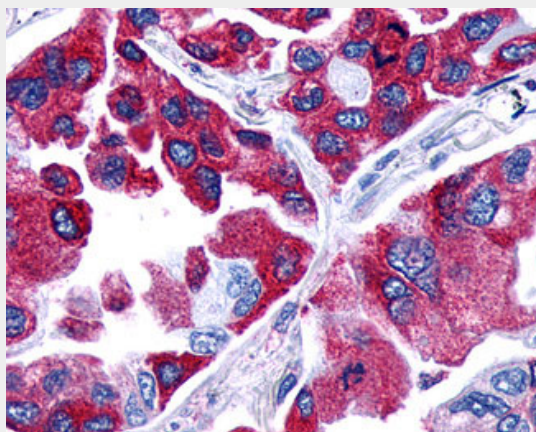
Anti-PTGER4 / EP4 antibody IHC of human prostate, benign prostatic hyperplasia.



Anti-PTGER4 / EP4 antibody IHC of human Prostate, Carcinoma.



Anti-PTGER4 / EP4 antibody ALS10711 IHC of human colon, ganglion.



Anti-PTGER4 / EP4 antibody IHC of human Lung, Adenocarcinoma.

PTGER4 / EP4 Antibody (C-Terminus) - Background

Receptor for prostaglandin E2 (PGE2). The activity of this receptor is mediated by G(s) proteins that stimulate adenylate cyclase. Has a relaxing effect on smooth muscle. May play an important role in regulating renal hemodynamics, intestinal epithelial transport, adrenal aldosterone secretion, and uterine function.

PTGER4 / EP4 Antibody (C-Terminus) - References

Bastien L., et al. J. Biol. Chem. 269:11873-11877(1994).

An S.,et al.Biochem. Biophys. Res. Commun. 197:263-270(1993).
Foord S.M.,et al.Genomics 35:182-188(1996).
Mori K.,et al.J. Mol. Med. 74:333-336(1996).
Kopatz S.A.,et al.Submitted (OCT-2003) to the EMBL/GenBank/DDBJ databases.