

**GIPR / GIP Receptor Antibody (Cytoplasmic Domain)  
Rabbit Polyclonal Antibody  
Catalog # ALS10706**

**Specification**

---

**GIPR / GIP Receptor Antibody (Cytoplasmic Domain) - Product Information**

Application	IHC
Primary Accession	<a href="#">P48546</a>
Reactivity	Human, Monkey
Host	Rabbit
Clonality	Polyclonal
Calculated MW	53kDa KDa

**GIPR / GIP Receptor Antibody (Cytoplasmic Domain) - Additional Information**

**Gene ID** 2696

**Other Names**

Gastric inhibitory polypeptide receptor, GIP-R, Glucose-dependent insulinotropic polypeptide receptor, GIPR

**Target/Specificity**

Human GIPR. BLAST analysis of the peptide immunogen showed no homology with other human proteins, except GHRHR (100%), GCGR (61%), GLP2R (61%).

**Reconstitution & Storage**

Long term: -70°C; Short term: +4°C

**Precautions**

GIPR / GIP Receptor Antibody (Cytoplasmic Domain) is for research use only and not for use in diagnostic or therapeutic procedures.

**GIPR / GIP Receptor Antibody (Cytoplasmic Domain) - Protein Information**

**Name** GIPR

**Function**

This is a receptor for GIP. The activity of this receptor is mediated by G proteins which activate adenylyl cyclase.

**Cellular Location**

Cell membrane; Multi-pass membrane protein

**Volume**

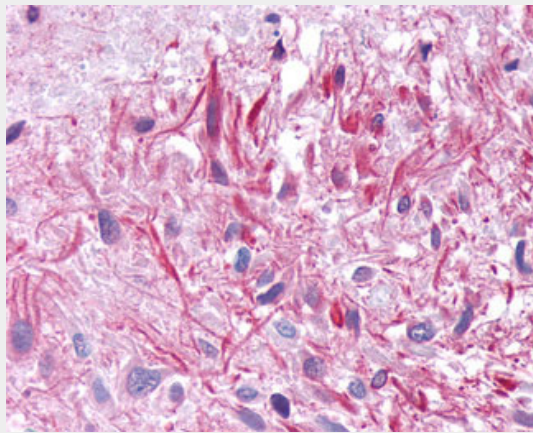
50 µl

## GIPR / GIP Receptor Antibody (Cytoplasmic Domain) - Protocols

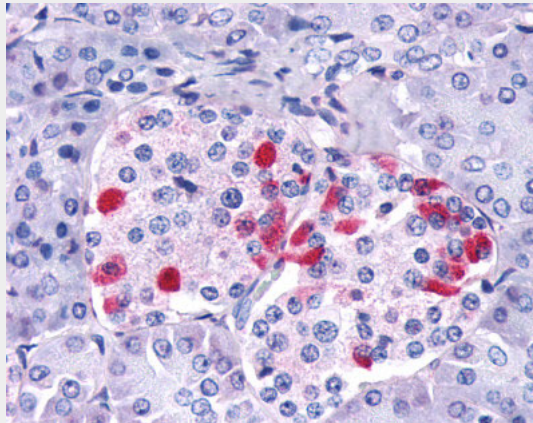
Provided below are standard protocols that you may find useful for product applications.

- [Western Blot](#)
- [Blocking Peptides](#)
- [Dot Blot](#)
- [Immunohistochemistry](#)
- [Immunofluorescence](#)
- [Immunoprecipitation](#)
- [Flow Cytometry](#)
- [Cell Culture](#)

## GIPR / GIP Receptor Antibody (Cytoplasmic Domain) - Images



Anti-GIPR / GIP Receptor antibody IHC of human Brain, Glioblastoma.



Anti-GIPR antibody ALS10706 IHC of human pancreas, islet of Langerhans.

## GIPR / GIP Receptor Antibody (Cytoplasmic Domain) - Background

This is a receptor for GIP. The activity of this receptor is mediated by G proteins which activate adenylyl cyclase.

## GIPR / GIP Receptor Antibody (Cytoplasmic Domain) - References

Usdin T.B., et al. Submitted (OCT-1995) to the EMBL/GenBank/DDBJ databases.  
Volz A., et al. FEBS Lett. 373:23-29(1995).  
Gremlich S., et al. Diabetes 44:1202-1208(1995).

Yamada Y., et al. Genomics 29:773-776(1995).  
Grimwood J., et al. Nature 428:529-535(2004).