

AVPR1A / V1a Receptor Antibody (Cytoplasmic Domain)
Rabbit Polyclonal Antibody
Catalog # ALS10703

Specification

AVPR1A / V1a Receptor Antibody (Cytoplasmic Domain) - Product Information

Application	IHC
Primary Accession	P37288
Reactivity	Human
Host	Rabbit
Clonality	Polyclonal
Calculated MW	47kDa KDa

AVPR1A / V1a Receptor Antibody (Cytoplasmic Domain) - Additional Information

Gene ID 552

Other Names

Vasopressin V1a receptor, V1aR, AVPR V1a, Antidiuretic hormone receptor 1a, Vascular/hepatic-type arginine vasopressin receptor, AVPR1A, AVPR1

Target/Specificity

Human AVPR1A. BLAST analysis of the peptide immunogen showed no homology with other human proteins.

Reconstitution & Storage

Long term: -70°C; Short term: +4°C

Precautions

AVPR1A / V1a Receptor Antibody (Cytoplasmic Domain) is for research use only and not for use in diagnostic or therapeutic procedures.

AVPR1A / V1a Receptor Antibody (Cytoplasmic Domain) - Protein Information

Name AVPR1A

Synonyms AVPR1

Function

Receptor for arginine vasopressin. The activity of this receptor is mediated by G proteins which activate a phosphatidyl- inositol-calcium second messenger system. Has been involved in social behaviors, including affiliation and attachment.

Cellular Location

Cell membrane; Multi-pass membrane protein.

Volume

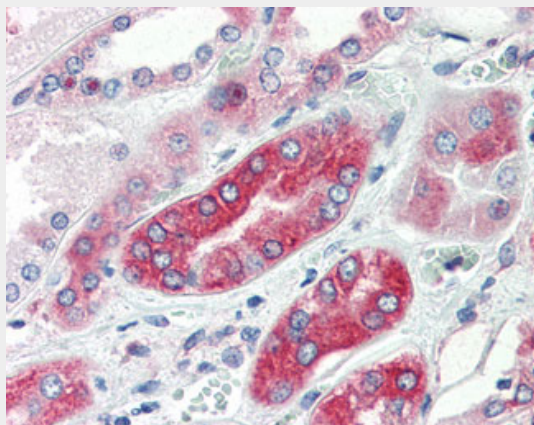
50 µl

AVPR1A / V1a Receptor Antibody (Cytoplasmic Domain) - Protocols

Provided below are standard protocols that you may find useful for product applications.

- [Western Blot](#)
- [Blocking Peptides](#)
- [Dot Blot](#)
- [Immunohistochemistry](#)
- [Immunofluorescence](#)
- [Immunoprecipitation](#)
- [Flow Cytometry](#)
- [Cell Culture](#)

AVPR1A / V1a Receptor Antibody (Cytoplasmic Domain) - Images



Anti-AVPR1A antibody ALS10703 IHC of human kidney.

AVPR1A / V1a Receptor Antibody (Cytoplasmic Domain) - Background

Receptor for arginine vasopressin. The activity of this receptor is mediated by G proteins which activate a phosphatidyl- inositol-calcium second messenger system. Has been involved in social behaviors, including affiliation and attachment.

AVPR1A / V1a Receptor Antibody (Cytoplasmic Domain) - References

- Thibonnier M., et al. J. Biol. Chem. 269:3304-3310(1994).
Hirasawa A., et al. Biochem. Biophys. Res. Commun. 203:72-79(1994).
North W.G., et al. Peptides 18:985-993(1997).
North W.G., et al. Cancer Res. 58:1866-1871(1998).
Kopatz S.A., et al. Submitted (JUN-2003) to the EMBL/GenBank/DDBJ databases.