

LPAR2 / EDG4 Antibody (Cytoplasmic Domain)
Rabbit Polyclonal Antibody
Catalog # ALS10695

Specification

LPAR2 / EDG4 Antibody (Cytoplasmic Domain) - Product Information

Application	IHC
Primary Accession	O9HBW0
Host	Rabbit
Clonality	Polyclonal
Calculated MW	39kDa KDa

LPAR2 / EDG4 Antibody (Cytoplasmic Domain) - Additional Information

Other Names

Lysophosphatidic acid receptor 2, LPA receptor 2, LPA-2, Lysophosphatidic acid receptor Edg-4, LPAR2, EDG4, LPA2

Target/Specificity

Human LPAR2 / EDG4. BLAST analysis of the peptide immunogen showed no homology with other human proteins.

Reconstitution & Storage

Long term: -70°C; Short term: +4°C

Precautions

LPAR2 / EDG4 Antibody (Cytoplasmic Domain) is for research use only and not for use in diagnostic or therapeutic procedures.

LPAR2 / EDG4 Antibody (Cytoplasmic Domain) - Protein Information

Name LPAR2 ([HGNC:3168](#))

Synonyms EDG4, LPA2

Function

Receptor for lysophosphatidic acid (LPA), a mediator of diverse cellular activities. Seems to be coupled to the G(i)/G(o), G(12)/G(13), and G(q) families of heteromeric G proteins. Plays a key role in phospholipase C-beta (PLC-beta) signaling pathway. Stimulates phospholipase C (PLC) activity in a manner that is independent of RALA activation.

Cellular Location

Cell surface. Cell membrane; Multi-pass membrane protein. Note=Prior to LPA treatment found predominantly at the cell surface but in the presence of LPA colocalizes with RALA in the endocytic vesicles

Tissue Location

Expressed most abundantly in testes and peripheral blood leukocytes with less expression in

pancreas, spleen, thymus and prostate. Little or no expression in heart, brain, placenta, lung, liver, skeletal muscle, kidney, ovary, small intestine, or colon

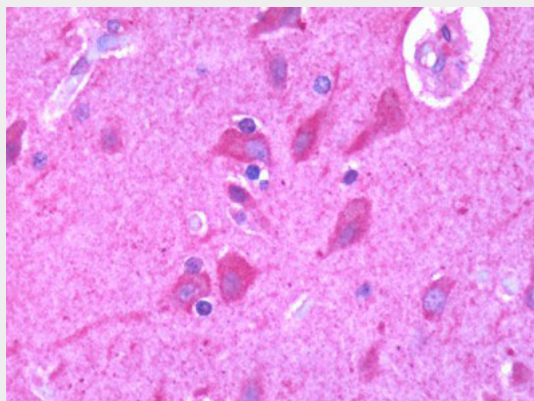
Volume

50 μ l

LPAR2 / EDG4 Antibody (Cytoplasmic Domain) - Protocols

Provided below are standard protocols that you may find useful for product applications.

- [Western Blot](#)
- [Blocking Peptides](#)
- [Dot Blot](#)
- [Immunohistochemistry](#)
- [Immunofluorescence](#)
- [Immunoprecipitation](#)
- [Flow Cytometry](#)
- [Cell Culture](#)

LPAR2 / EDG4 Antibody (Cytoplasmic Domain) - Images

Human Brain, Cortex: Formalin-Fixed, Paraffin-Embedded (FFPE)

LPAR2 / EDG4 Antibody (Cytoplasmic Domain) - Background

Receptor for lysophosphatidic acid (LPA), a mediator of diverse cellular activities. Seems to be coupled to the G(i)/G(o), G(12)/G(13), and G(q) families of heteromeric G proteins. Plays a key role in phospholipase C-beta (PLC-beta) signaling pathway. Stimulates phospholipase C (PLC) activity in a manner that is independent of RALA activation.

LPAR2 / EDG4 Antibody (Cytoplasmic Domain) - References

- An S., et al. J. Biol. Chem. 273:7906-7910(1998).
Bandoh K., et al. FEBS Lett. 478:159-165(2000).
An S., et al. Submitted (OCT-1999) to the EMBL/GenBank/DDBJ databases.
Kopatz S.A., et al. Submitted (JUN-2003) to the EMBL/GenBank/DDBJ databases.
Grimwood J., et al. Nature 428:529-535(2004).