

VIPR1 Antibody (N-Terminus)
Rabbit Polyclonal Antibody
Catalog # ALS10683

Specification

VIPR1 Antibody (N-Terminus) - Product Information

Application	IHC
Primary Accession	P32241
Reactivity	Human
Host	Rabbit
Clonality	Polyclonal
Calculated MW	52kDa KDa

VIPR1 Antibody (N-Terminus) - Additional Information

Gene ID 7433

Other Names

Vasoactive intestinal polypeptide receptor 1, VIP-R-1, Pituitary adenylate cyclase-activating polypeptide type II receptor, PACAP type II receptor, PACAP-R-2, PACAP-R2, VPAC1, VIPR1

Target/Specificity

Human VIP Receptor 1. BLAST analysis of the peptide immunogen showed no homology with other human proteins.

Reconstitution & Storage

Long term: -70°C; Short term: +4°C

Precautions

VIPR1 Antibody (N-Terminus) is for research use only and not for use in diagnostic or therapeutic procedures.

VIPR1 Antibody (N-Terminus) - Protein Information

Name VIPR1

Function

This is a receptor for VIP. The activity of this receptor is mediated by G proteins which activate adenylyl cyclase. The affinity is VIP = PACAP-27 > PACAP-38.

Cellular Location

Cell membrane; Multi-pass membrane protein.

Tissue Location

In lung, HT-29 colonic epithelial cells, Raji B- lymphoblasts. Lesser extent in brain, heart, kidney, liver and placenta. Not expressed in CD4+ or CD8+ T-cells. Expressed in the T- cell lines HARRIS, HuT 78, Jurkat and SUP-T1, but not in the T-cell lines Peer, MOLT-4, HSB and YT.

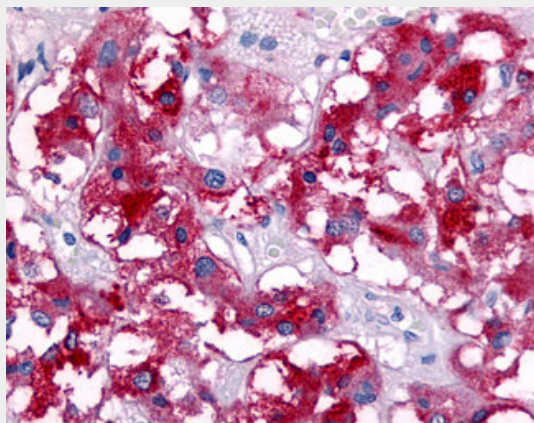
Volume
50 µl

VIPR1 Antibody (N-Terminus) - Protocols

Provided below are standard protocols that you may find useful for product applications.

- [Western Blot](#)
- [Blocking Peptides](#)
- [Dot Blot](#)
- [Immunohistochemistry](#)
- [Immunofluorescence](#)
- [Immunoprecipitation](#)
- [Flow Cytometry](#)
- [Cell Culture](#)

VIPR1 Antibody (N-Terminus) - Images



Anti-VIP Receptor 1 antibody ALS10683 IHC of human adrenal medulla.

VIPR1 Antibody (N-Terminus) - Background

This is a receptor for VIP. The activity of this receptor is mediated by G proteins which activate adenylyl cyclase. The affinity is VIP = PACAP-27 > PACAP-38.

VIPR1 Antibody (N-Terminus) - References

Sreedharan S.P., et al. *Biochem. Biophys. Res. Commun.* 193:546-553(1993).
Couvineau A., et al. *Biochem. Biophys. Res. Commun.* 200:769-776(1994).
Suwa M., et al. Submitted (JUL-2001) to the EMBL/GenBank/DDBJ databases.
Martin A.L., et al. Submitted (APR-2007) to the EMBL/GenBank/DDBJ databases.
Ota T., et al. *Nat. Genet.* 36:40-45(2004).