

**GPR150 Antibody (C-Terminus)**  
**Rabbit Polyclonal Antibody**  
**Catalog # ALS10649**

**Specification**

---

**GPR150 Antibody (C-Terminus) - Product Information**

|                   |                        |
|-------------------|------------------------|
| Application       | IHC                    |
| Primary Accession | <a href="#">Q8NGU9</a> |
| Reactivity        | Human                  |
| Host              | Rabbit                 |
| Clonality         | Polyclonal             |
| Calculated MW     | 46kDa KDa              |

**GPR150 Antibody (C-Terminus) - Additional Information**

**Gene ID** 285601

**Other Names**

Probable G-protein coupled receptor 150, GPR150

**Target/Specificity**

Human GPR150. BLAST analysis of the peptide immunogen showed no homology with other human proteins, except ATP2B2 (56%).

**Reconstitution & Storage**

Long term: -70°C; Short term: +4°C

**Precautions**

GPR150 Antibody (C-Terminus) is for research use only and not for use in diagnostic or therapeutic procedures.

**GPR150 Antibody (C-Terminus) - Protein Information**

**Name** GPR150

**Function**

Orphan receptor.

**Cellular Location**

Cell membrane; Multi-pass membrane protein.

**Volume**

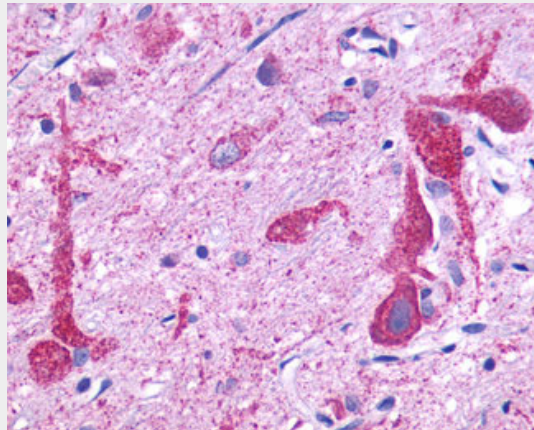
50 µl

**GPR150 Antibody (C-Terminus) - Protocols**

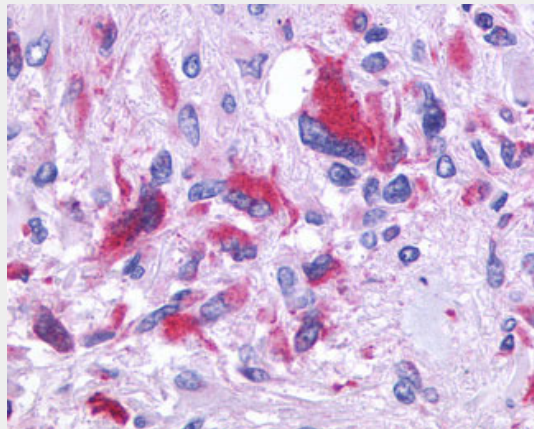
Provided below are standard protocols that you may find useful for product applications.

- [Western Blot](#)
- [Blocking Peptides](#)
- [Dot Blot](#)
- [Immunohistochemistry](#)
- [Immunofluorescence](#)
- [Immunoprecipitation](#)
- [Flow Cytometry](#)
- [Cell Culture](#)

#### **GPR150 Antibody (C-Terminus) - Images**



Anti-GPR150 antibody ALS10649 IHC of human brain.



Anti-GPR150 antibody IHC of human Brain, Glioblastoma.

#### **GPR150 Antibody (C-Terminus) - Background**

Orphan receptor.

#### **GPR150 Antibody (C-Terminus) - References**

Suwa M., et al. Submitted (JUL-2001) to the EMBL/GenBank/DDBJ databases.