

GPR150 Antibody (N-Terminus)
Rabbit Polyclonal Antibody
Catalog # ALS10648

Specification

GPR150 Antibody (N-Terminus) - Product Information

Application	IHC
Primary Accession	Q8NGU9
Reactivity	Human
Host	Rabbit
Clonality	Polyclonal
Calculated MW	46kDa KDa

GPR150 Antibody (N-Terminus) - Additional Information

Gene ID 285601

Other Names

Probable G-protein coupled receptor 150, GPR150

Target/Specificity

Human GPR150. BLAST analysis of the peptide immunogen showed no homology with other human proteins.

Reconstitution & Storage

Long term: -70°C; Short term: +4°C

Precautions

GPR150 Antibody (N-Terminus) is for research use only and not for use in diagnostic or therapeutic procedures.

GPR150 Antibody (N-Terminus) - Protein Information

Name GPR150

Function

Orphan receptor.

Cellular Location

Cell membrane; Multi-pass membrane protein.

Volume

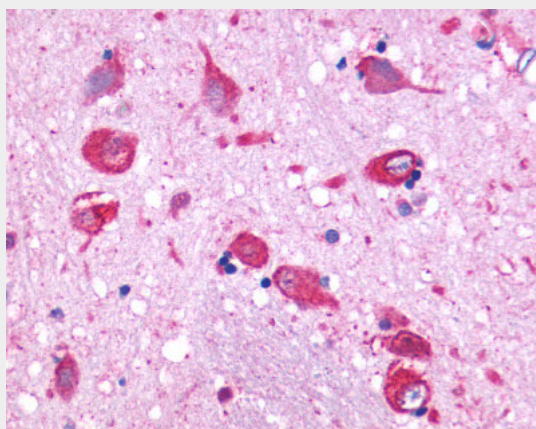
50 µl

GPR150 Antibody (N-Terminus) - Protocols

Provided below are standard protocols that you may find useful for product applications.

- [Western Blot](#)
- [Blocking Peptides](#)
- [Dot Blot](#)
- [Immunohistochemistry](#)
- [Immunofluorescence](#)
- [Immunoprecipitation](#)
- [Flow Cytometry](#)
- [Cell Culture](#)

GPR150 Antibody (N-Terminus) - Images



Anti-GPR150 antibody ALS10648 IHC of human brain, neurons and glia.

GPR150 Antibody (N-Terminus) - Background

Orphan receptor.

GPR150 Antibody (N-Terminus) - References

Suwa M., et al. Submitted (JUL-2001) to the EMBL/GenBank/DDBJ databases.