

**GRM3 / MGLUR3 Antibody (N-Terminus)**  
**Rabbit Polyclonal Antibody**  
**Catalog # ALS10633**

**Specification**

---

**GRM3 / MGLUR3 Antibody (N-Terminus) - Product Information**

Application	IHC, ICC
Primary Accession	<a href="#">Q14832</a>
Reactivity	Human, Monkey, Pig, Horse, Bovine
Host	Rabbit
Clonality	Polyclonal
Calculated MW	99kDa KDa

**GRM3 / MGLUR3 Antibody (N-Terminus) - Additional Information**

**Gene ID** 2913

**Other Names**

Metabotropic glutamate receptor 3, mGluR3, GRM3, GPRC1C, MGLUR3

**Target/Specificity**

Human GRM3 / MGLUR3. BLAST analysis of the peptide immunogen showed no homology with other human proteins.

**Reconstitution & Storage**

Long term: -70°C; Short term: +4°C

**Precautions**

GRM3 / MGLUR3 Antibody (N-Terminus) is for research use only and not for use in diagnostic or therapeutic procedures.

**GRM3 / MGLUR3 Antibody (N-Terminus) - Protein Information**

**Name** GRM3

**Synonyms** GPRC1C, MGLUR3

**Function**

G-protein coupled receptor for glutamate. Ligand binding causes a conformation change that triggers signaling via guanine nucleotide-binding proteins (G proteins) and modulates the activity of down-stream effectors. Signaling inhibits adenylate cyclase activity.

**Cellular Location**

Cell membrane; Multi-pass membrane protein

**Tissue Location**

Detected in brain cortex, thalamus, subthalamic nucleus, substantia nigra, hypothalamus, hippocampus, corpus callosum, caudate nucleus and amygdala.

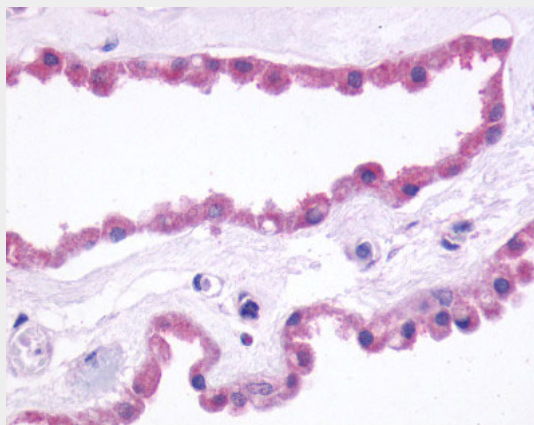
**Volume**  
50  $\mu$ l

### **GRM3 / MGLUR3 Antibody (N-Terminus) - Protocols**

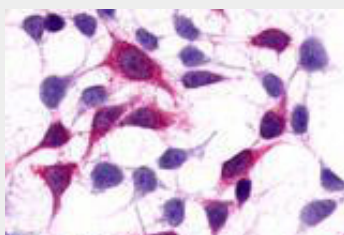
Provided below are standard protocols that you may find useful for product applications.

- [Western Blot](#)
- [Blocking Peptides](#)
- [Dot Blot](#)
- [Immunohistochemistry](#)
- [Immunofluorescence](#)
- [Immunoprecipitation](#)
- [Flow Cytometry](#)
- [Cell Culture](#)

### **GRM3 / MGLUR3 Antibody (N-Terminus) - Images**



Anti-GRM3 / MGLUR3 antibody ALS10633 IHC of human brain, coroid plexus.



Anti-GRM3 / MGLUR3 antibody ALS10633 immunocytochemistry (ICC) staining of HEK293 human...

### **GRM3 / MGLUR3 Antibody (N-Terminus) - Background**

G-protein coupled receptor for glutamate. Ligand binding causes a conformation change that triggers signaling via guanine nucleotide-binding proteins (G proteins) and modulates the activity of down-stream effectors. Signaling inhibits adenylate cyclase activity.

### **GRM3 / MGLUR3 Antibody (N-Terminus) - References**

Makoff A., et al. Brain Res. Mol. Brain Res. 40:55-63(1996).  
Sartorius L.J., et al. J. Neurochem. 96:1139-1148(2006).

Hillier L.W.,et al.Nature 424:157-164(2003).