

EPHA4 / EPH Receptor A4 Antibody (Internal)
Rabbit Polyclonal Antibody
Catalog # ALS10595

Specification

EPHA4 / EPH Receptor A4 Antibody (Internal) - Product Information

Application	IHC
Primary Accession	P54764
Reactivity	Human, Monkey, Pig, Horse, Bovine, Dog
Host	Rabbit
Clonality	Polyclonal
Calculated MW	110kDa KDa

EPHA4 / EPH Receptor A4 Antibody (Internal) - Additional Information

Gene ID 2043

Other Names

Ephrin type-A receptor 4, 2.7.10.1, EPH-like kinase 8, EK8, hEK8, Tyrosine-protein kinase TYRO1, Tyrosine-protein kinase receptor SEK, EPHA4, HEK8, SEK, TYRO1

Target/Specificity

Human EPHA4. BLAST analysis of the peptide immunogen showed no homology with other human proteins.

Reconstitution & Storage

Long term: -70°C; Short term: +4°C

Precautions

EPHA4 / EPH Receptor A4 Antibody (Internal) is for research use only and not for use in diagnostic or therapeutic procedures.

EPHA4 / EPH Receptor A4 Antibody (Internal) - Protein Information

Name EPHA4

Synonyms HEK8, SEK, TYRO1

Function

Receptor tyrosine kinase which binds membrane-bound ephrin family ligands residing on adjacent cells, leading to contact-dependent bidirectional signaling into neighboring cells. The signaling pathway downstream of the receptor is referred to as forward signaling while the signaling pathway downstream of the ephrin ligand is referred to as reverse signaling. Highly promiscuous, it has the unique property among Eph receptors to bind and to be physiologically activated by both GPI- anchored ephrin-A and transmembrane ephrin-B ligands including EFNA1 and EFNB3. Upon activation by ephrin ligands, modulates cell morphology and integrin-dependent cell adhesion through regulation of the Rac, Rap and Rho GTPases activity. Plays an important role in the development of the nervous system controlling different steps of axonal guidance including

the establishment of the corticospinal projections. May also control the segregation of motor and sensory axons during neuromuscular circuit development. In addition to its role in axonal guidance plays a role in synaptic plasticity. Activated by EFNA1 phosphorylates CDK5 at 'Tyr-15' which in turn phosphorylates NGEF regulating RHOA and dendritic spine morphogenesis. In the nervous system, also plays a role in repair after injury preventing axonal regeneration and in angiogenesis playing a role in central nervous system vascular formation. Additionally, its promiscuity makes it available to participate in a variety of cell-cell signaling regulating for instance the development of the thymic epithelium. During development of the cochlear organ of Corti, regulates pillar cell separation by forming a ternary complex with ADAM10 and CADH1 which facilitates the cleavage of CADH1 by ADAM10 and disruption of adherens junctions (By similarity). Phosphorylates CAPRIN1, promoting CAPRIN1-dependent formation of a membraneless compartment (By similarity).

Cellular Location

Cell membrane {ECO:0000250|UniProtKB:Q03137}; Single-pass type I membrane protein {ECO:0000250|UniProtKB:Q03137} Cell projection, axon {ECO:0000250|UniProtKB:Q03137}. Cell projection, dendrite {ECO:0000250|UniProtKB:Q03137}. Postsynaptic density membrane {ECO:0000250|UniProtKB:Q03137}. Early endosome {ECO:0000250|UniProtKB:Q03137}. Cell junction, adherens junction {ECO:0000250|UniProtKB:Q03137}. Note=Clustered upon activation and targeted to early endosome. {ECO:0000250|UniProtKB:Q03137}

Tissue Location

Ubiquitous..

Volume

50 µl

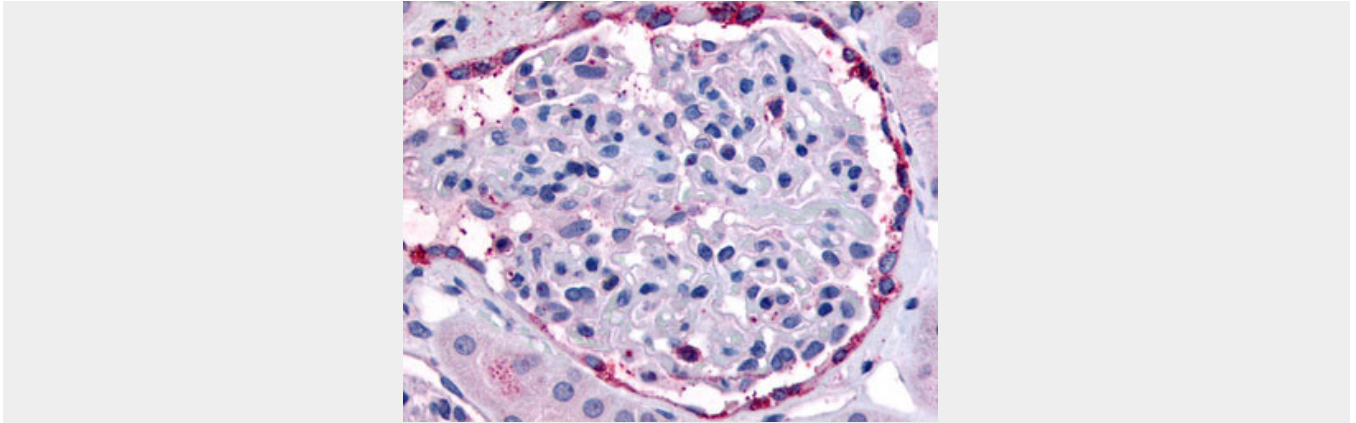
EPHA4 / EPH Receptor A4 Antibody (Internal) - Protocols

Provided below are standard protocols that you may find useful for product applications.

- [Western Blot](#)
- [Blocking Peptides](#)
- [Dot Blot](#)
- [Immunohistochemistry](#)
- [Immunofluorescence](#)
- [Immunoprecipitation](#)
- [Flow Cytometry](#)
- [Cell Culture](#)

EPHA4 / EPH Receptor A4 Antibody (Internal) - Images





Anti-EPHA4 antibody ALS10595 IHC of human kidney, glomerulus.

EPHA4 / EPH Receptor A4 Antibody (Internal) - Background

Receptor tyrosine kinase which binds membrane-bound ephrin family ligands residing on adjacent cells, leading to contact-dependent bidirectional signaling into neighboring cells. The signaling pathway downstream of the receptor is referred to as forward signaling while the signaling pathway downstream of the ephrin ligand is referred to as reverse signaling. Highly promiscuous, it has the unique property among Eph receptors to bind and to be physiologically activated by both GPI-anchored ephrin-A and transmembrane ephrin-B ligands including EFNA1 and EFNB3. Upon activation by ephrin ligands, modulates cell morphology and integrin-dependent cell adhesion through regulation of the Rac, Rap and Rho GTPases activity. Plays an important role in the development of the nervous system controlling different steps of axonal guidance including the establishment of the corticospinal projections. May also control the segregation of motor and sensory axons during neuromuscular circuit development. In addition to its role in axonal guidance plays a role in synaptic plasticity. Activated by EFNA1 phosphorylates CDK5 at 'Tyr-15' which in turn phosphorylates NGEF regulating RHOA and dendritic spine morphogenesis. In the nervous system, plays also a role in repair after injury preventing axonal regeneration and in angiogenesis playing a role in central nervous system vascular formation. Additionally, its promiscuity makes it available to participate in a variety of cell-cell signaling regulating for instance the development of the thymic epithelium.

EPHA4 / EPH Receptor A4 Antibody (Internal) - References

- Fox G.M.,et al.Oncogene 10:897-905(1995).
- Ota T.,et al.Nat. Genet. 36:40-45(2004).
- Hillier L.W.,et al.Nature 434:724-731(2005).
- Richter M.,et al.J. Neurosci. 27:14205-14215(2007).
- Fu W.Y.,et al.Nat. Neurosci. 10:67-76(2007).