

SLC5A4 / SGLT2 Antibody (C-Terminus)
Rabbit Polyclonal Antibody
Catalog # ALS10585**Specification**

SLC5A4 / SGLT2 Antibody (C-Terminus) - Product Information

Application	IHC
Primary Accession	O9NY91
Reactivity	Human
Host	Rabbit
Clonality	Polyclonal
Calculated MW	72kDa KDa

SLC5A4 / SGLT2 Antibody (C-Terminus) - Additional Information**Gene ID** 6527**Other Names**

Low affinity sodium-glucose cotransporter, Sodium/glucose cotransporter 3, Na(+)/glucose cotransporter 3, Solute carrier family 5 member 4, SLC5A4, SAAT1, SGLT2

Target/Specificity

Human SLC5A4. BLAST analysis of the peptide immunogen showed no homology with other human proteins.

Reconstitution & Storage

Long term: -70°C; Short term: +4°C

Precautions

SLC5A4 / SGLT2 Antibody (C-Terminus) is for research use only and not for use in diagnostic or therapeutic procedures.

SLC5A4 / SGLT2 Antibody (C-Terminus) - Protein Information**Name** SLC5A4 {ECO:0000303|PubMed:13130073}**Function**

Does not function as sodium/D-glucose symporter (PubMed:13130073, PubMed:20421923, PubMed:22766068). However, may function as a D-glucose sensor by generating a D-glucose-induced depolarization which is pH-independent, Na(+)-dependent at neutral pH and probably H(+)-dependent at acidic pH (PubMed:13130073, PubMed:17110502, PubMed:20421923, PubMed:22766068).

Cellular Location

Cell membrane; Multi-pass membrane protein

Tissue Location

Expressed in skeletal muscle, where it may localize to the neuromuscular junction (at protein level) (PubMed:13130073) Expressed in small intestine where it may localize to cholinergic neurons of the submucosal plexus and myenteric plexus (at protein level) (PubMed:13130073). Detected in kidney (at protein level) (PubMed:22766068).

Volume

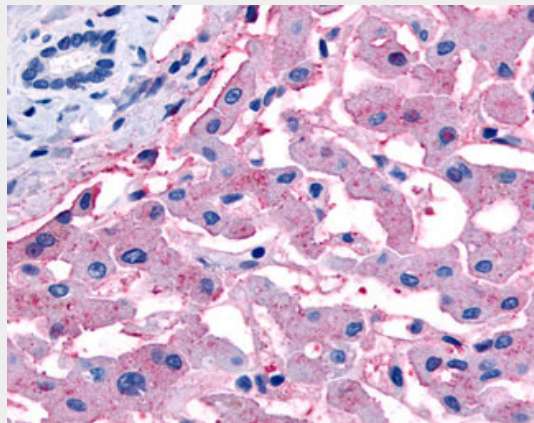
50 μ l

SLC5A4 / SGLT2 Antibody (C-Terminus) - Protocols

Provided below are standard protocols that you may find useful for product applications.

- [Western Blot](#)
- [Blocking Peptides](#)
- [Dot Blot](#)
- [Immunohistochemistry](#)
- [Immunofluorescence](#)
- [Immunoprecipitation](#)
- [Flow Cytometry](#)
- [Cell Culture](#)

SLC5A4 / SGLT2 Antibody (C-Terminus) - Images



Anti-SLC5A4 antibody ALS10585 IHC of human liver.

SLC5A4 / SGLT2 Antibody (C-Terminus) - Background

Sodium-dependent glucose transporter.

SLC5A4 / SGLT2 Antibody (C-Terminus) - References

Gorboulev V., et al. Submitted (FEB-2000) to the EMBL/GenBank/DDBJ databases.
Dunham I., et al. Nature 402:489-495(1999).
Poppe R., et al. Submitted (DEC-1995) to the EMBL/GenBank/DDBJ databases.