

XPR1 Antibody (C-Terminus)
Rabbit Polyclonal Antibody
Catalog # ALS10566**Specification**

XPR1 Antibody (C-Terminus) - Product Information

Application	IHC, ICC
Primary Accession	O9UBH6
Reactivity	Human, Mouse, Rabbit, Hamster, Monkey
Host	Rabbit
Clonality	Polyclonal
Calculated MW	82kDa KDa

XPR1 Antibody (C-Terminus) - Additional Information**Gene ID** 9213**Other Names**

Xenotropic and polytropic retrovirus receptor 1, Protein SYG1 homolog, Xenotropic and polytropic murine leukemia virus receptor X3, X-receptor, XPR1, SYG1, XR

Target/Specificity

Human XPR1. BLAST analysis of the peptide immunogen showed no homology with other human proteins.

Reconstitution & Storage

Long term: -70°C; Short term: +4°C

Precautions

XPR1 Antibody (C-Terminus) is for research use only and not for use in diagnostic or therapeutic procedures.

XPR1 Antibody (C-Terminus) - Protein Information**Name** XPR1 {ECO:0000303|PubMed:31043717}**Function**

Inorganic ion transporter that mediates phosphate ion export across plasma membrane. Plays a major role in phosphate homeostasis, preventing intracellular phosphate accumulation and possible calcium phosphate precipitation, ultimately preserving calcium signaling. The molecular mechanism of phosphate transport, whether electrogenic, electroneutral or coupled to other ions, remains to be elucidated (By similarity) (PubMed:23791524, PubMed:25938945, PubMed:31043717). Binds inositol hexakisphosphate (Ins6P) and similar inositol polyphosphates, such as 5-diphospho-inositol pentakisphosphate (5-InsP7), important intracellular signaling molecules involved in regulation of phosphate flux (PubMed:27080106)

target="_blank">27080106).

Cellular Location

Cell membrane; Multi-pass membrane protein

Tissue Location

Widely expressed. Detected in spleen, lymph node, thymus, leukocytes, bone marrow, heart, kidney, pancreas and skeletal muscle.

Volume

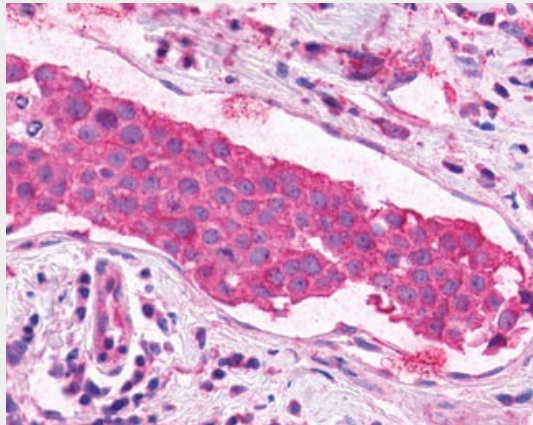
50 μ l

XPR1 Antibody (C-Terminus) - Protocols

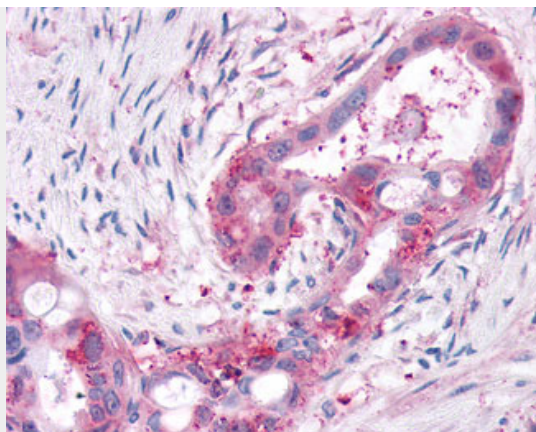
Provided below are standard protocols that you may find useful for product applications.

- [Western Blot](#)
- [Blocking Peptides](#)
- [Dot Blot](#)
- [Immunohistochemistry](#)
- [Immunofluorescence](#)
- [Immunoprecipitation](#)
- [Flow Cytometry](#)
- [Cell Culture](#)

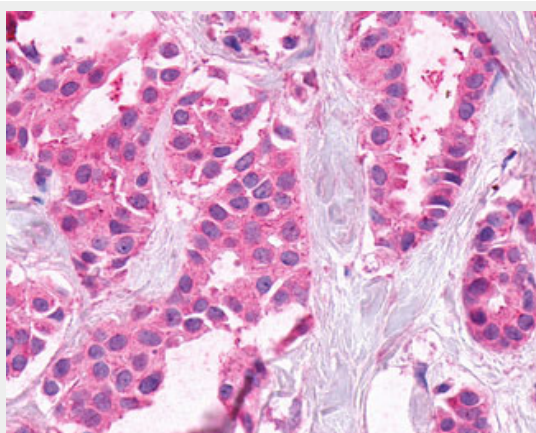
XPR1 Antibody (C-Terminus) - Images



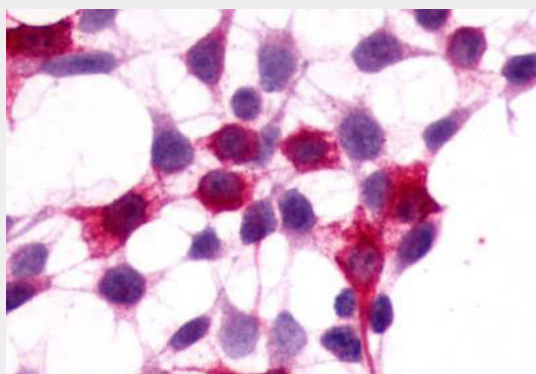
Anti-XPR1 antibody IHC of human Breast, Carcinoma.



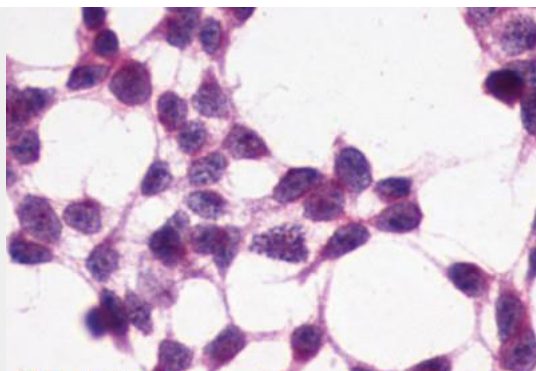
Anti-XPR1 antibody IHC of human Pancreas, Carcinoma.



Anti-XPR1 antibody IHC of human Breast, Carcinoma.



Anti-XPR1 antibody ALS10566 immunocytochemistry (ICC) staining of HEK293 human embryonic kidney...



Anti-XPR1 antibody ALS10566 immunocytochemistry (ICC) staining of untransfected HEK293 human...

XPR1 Antibody (C-Terminus) - Background

May function in G-protein coupled signal transduction (By similarity). Potential receptor for xenotropic and polytropic murine leukemia retroviruses.

XPR1 Antibody (C-Terminus) - References

Yang Y.-L.,et al.Nat. Genet. 21:216-219(1999).

Taylor C.S.,et al.Proc. Natl. Acad. Sci. U.S.A. 96:927-932(1999).

Battini J.-L.,et al.Proc. Natl. Acad. Sci. U.S.A. 96:1385-1390(1999).

Gregory S.G.,et al.Nature 441:315-321(2006).

Mural R.J.,et al.Submitted (JUL-2007) to the EMBL/GenBank/DDBJ databases.