

RORB / ROR Beta Antibody (Ligand-binding Domain)
Rabbit Polyclonal Antibody
Catalog # ALS10547**Specification**

RORB / ROR Beta Antibody (Ligand-binding Domain) - Product Information

Application	IHC
Primary Accession	O92753
Reactivity	Human, Mouse, Rabbit, Hamster, Monkey, Chicken, Sheep, Horse, Bovine, Dog
Host	Rabbit
Clonality	Polyclonal

RORB / ROR Beta Antibody (Ligand-binding Domain) - Additional Information**Other Names**

Nuclear receptor ROR-beta, Nuclear receptor RZR-beta, Nuclear receptor subfamily 1 group F member 2, Retinoid-related orphan receptor-beta, RORB, NR1F2, RZRB

Target/Specificity

Human ROR Beta. BLAST analysis of the peptide immunogen showed no homology with other human proteins.

Reconstitution & Storage

Long term: -70°C; Short term: +4°C

Precautions

RORB / ROR Beta Antibody (Ligand-binding Domain) is for research use only and not for use in diagnostic or therapeutic procedures.

RORB / ROR Beta Antibody (Ligand-binding Domain) - Protein Information

Name RORB

Synonyms NR1F2, RZRB

Function

Nuclear receptor that binds DNA as a monomer to ROR response elements (RORE) containing a single core motif half-site 5'-AGGTCA-3' preceded by a short A-T-rich sequence. Considered to have intrinsic transcriptional activity, have some natural ligands such as all-trans retinoic acid (ATRA) and other retinoids which act as inverse agonists repressing the transcriptional activity. Required for normal postnatal development of rod and cone photoreceptor cells. Modulates rod photoreceptors differentiation at least by inducing the transcription factor NRL-mediated pathway. In cone photoreceptor cells, regulates transcription of OPN1SW. Involved in the regulation of the period length and stability of the circadian rhythm. May control cytoarchitectural patterning of neocortical neurons during development. May act in a dose-dependent manner to regulate barrel formation upon innervation of layer IV neurons by thalamocortical axons. May play a role in the suppression of osteoblastic differentiation through the inhibition of RUNX2 transcriptional activity

(By similarity).

Cellular Location

Nucleus, nucleoplasm

Volume

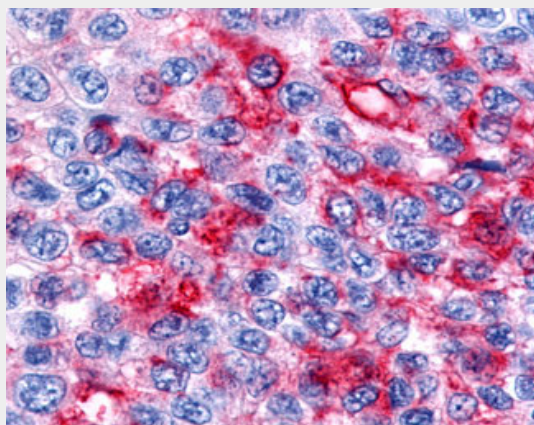
50 μ l

RORB / ROR Beta Antibody (Ligand-binding Domain) - Protocols

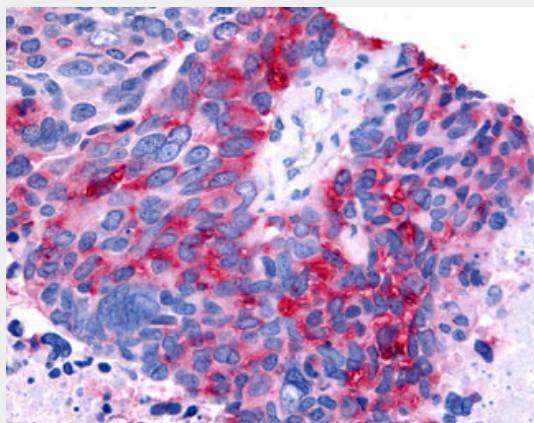
Provided below are standard protocols that you may find useful for product applications.

- [Western Blot](#)
- [Blocking Peptides](#)
- [Dot Blot](#)
- [Immunohistochemistry](#)
- [Immunofluorescence](#)
- [Immunoprecipitation](#)
- [Flow Cytometry](#)
- [Cell Culture](#)

RORB / ROR Beta Antibody (Ligand-binding Domain) - Images



Anti-RORB / ROR Beta antibody IHC of human Skin, Melanoma.



Anti-RORB / ROR Beta antibody IHC of human Lung, Small Cell Carcinoma.

RORB / ROR Beta Antibody (Ligand-binding Domain) - Background

#N/A

RORB / ROR Beta Antibody (Ligand-binding Domain) - References

#N/A