

**ADGRA2 / GPR124 Antibody (N-Terminus)**  
**Rabbit Polyclonal Antibody**  
**Catalog # ALS10531****Specification**

---

**ADGRA2 / GPR124 Antibody (N-Terminus) - Product Information**

Application	IHC
Primary Accession	<a href="#">O96PE1</a>
Reactivity	Human
Host	Rabbit
Clonality	Polyclonal
Calculated MW	143kDa KDa

**ADGRA2 / GPR124 Antibody (N-Terminus) - Additional Information**

**Gene ID** 25960

**Other Names**

G-protein coupled receptor 124, Tumor endothelial marker 5, GPR124, KIAA1531, TEM5

**Target/Specificity**

Human GPR124. BLAST analysis of the peptide immunogen showed no homology with other human proteins.

**Reconstitution & Storage**

Long term: -70°C; Short term: +4°C

**Precautions**

ADGRA2 / GPR124 Antibody (N-Terminus) is for research use only and not for use in diagnostic or therapeutic procedures.

**ADGRA2 / GPR124 Antibody (N-Terminus) - Protein Information**

**Name** ADGRA2 ([HGNC:17849](#))

**Function**

Endothelial receptor which functions together with RECK to enable brain endothelial cells to selectively respond to Wnt7 signals (WNT7A or WNT7B) (PubMed:[28289266](http://www.uniprot.org/citations/28289266)), PubMed:[30026314](http://www.uniprot.org/citations/30026314)). Plays a key role in Wnt7-specific responses, such as endothelial cell sprouting and migration in the forebrain and neural tube, and establishment of the blood-brain barrier (By similarity). Acts as a Wnt7-specific coactivator of canonical Wnt signaling: required to deliver RECK-bound Wnt7 to frizzled by assembling a higher-order RECK-ADGRA2-Fzd-LRP5-LRP6 complex (PubMed:[30026314](http://www.uniprot.org/citations/30026314)). ADGRA2-tethering function does not rely on its G-protein coupled receptor (GPCR) structure but instead on its combined capacity to interact with RECK extracellularly and recruit the Dishevelled scaffolding protein intracellularly (PubMed:[30026314](http://www.uniprot.org/citations/30026314))

target="\_blank">30026314</a>). Binds to the glycosaminoglycans heparin, heparin sulfate, chondroitin sulfate and dermatan sulfate (PubMed:<a href="http://www.uniprot.org/citations/16982628" target="\_blank">16982628</a>).

#### Cellular Location

Cell membrane; Multi-pass membrane protein. Cell projection, filopodium. Note=Enriched at lateral cell borders and also at sites of cell-ECM (extracellular matrix) contact

#### Tissue Location

Expressed in endothelial cells (at protein level) (PubMed:15021905, PubMed:16982628). Abundantly expressed in heart, placenta, ovary, small intestine, and colon (PubMed:15021905)

#### Volume

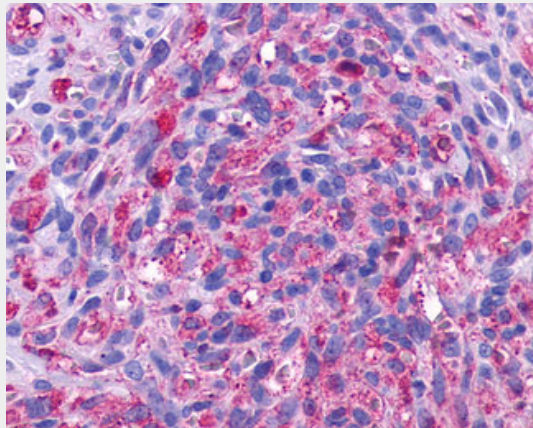
50  $\mu$ l

### ADGRA2 / GPR124 Antibody (N-Terminus) - Protocols

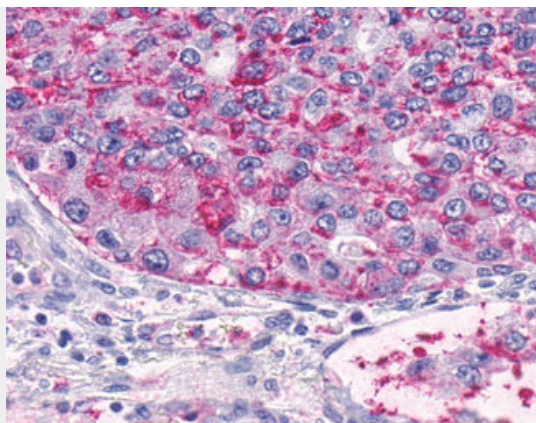
Provided below are standard protocols that you may find useful for product applications.

- [Western Blot](#)
- [Blocking Peptides](#)
- [Dot Blot](#)
- [Immunohistochemistry](#)
- [Immunofluorescence](#)
- [Immunoprecipitation](#)
- [Flow Cytometry](#)
- [Cell Culture](#)

### ADGRA2 / GPR124 Antibody (N-Terminus) - Images



Anti-GPR124 / TEM5 antibody IHC of human Skin, Kaposi Sarcoma Tumor Endothelium.



Anti-GPR124 / TEM5 antibody IHC of human Lung, Adenocarcinoma.

### **ADGRA2 / GPR124 Antibody (N-Terminus) - Background**

Endothelial receptor that acts as an essential regulator of CNS angiogenesis. Required for normal endothelial cell sprouting and migration in the forebrain and neural tube (By similarity).

### **ADGRA2 / GPR124 Antibody (N-Terminus) - References**

- Carson-Walter E.B., et al. *Cancer Res.* 61:6649-6655(2001).
- Nagase T., et al. *DNA Res.* 7:143-150(2000).
- Nakajima D., et al. *DNA Res.* 9:99-106(2002).
- Ota T., et al. *Nat. Genet.* 36:40-45(2004).
- Nusbaum C., et al. *Nature* 439:331-335(2006).