

ADGRA2 / GPR124 Antibody (N-Terminus)
Rabbit Polyclonal Antibody
Catalog # ALS10530**Specification**

ADGRA2 / GPR124 Antibody (N-Terminus) - Product Information

| | |
|-------------------|--|
| Application | IHC |
| Primary Accession | O96PE1 |
| Reactivity | Human, Rabbit, Monkey, Pig, Horse, Dog |
| Host | Rabbit |
| Clonality | Polyclonal |
| Calculated MW | 143kDa KDa |

ADGRA2 / GPR124 Antibody (N-Terminus) - Additional Information

Gene ID 25960

Other Names

G-protein coupled receptor 124, Tumor endothelial marker 5, GPR124, KIAA1531, TEM5

Target/Specificity

Human GPR124. BLAST analysis of the peptide immunogen showed no homology with other human proteins, except GPR125 (82%).

Reconstitution & Storage

Long term: -70°C; Short term: +4°C

Precautions

ADGRA2 / GPR124 Antibody (N-Terminus) is for research use only and not for use in diagnostic or therapeutic procedures.

ADGRA2 / GPR124 Antibody (N-Terminus) - Protein Information

Name ADGRA2 ([HGNC:17849](#))

Function

Endothelial receptor which functions together with RECK to enable brain endothelial cells to selectively respond to Wnt7 signals (WNT7A or WNT7B) (PubMed:[28289266](http://www.uniprot.org/citations/28289266)), PubMed:[30026314](http://www.uniprot.org/citations/30026314)). Plays a key role in Wnt7-specific responses, such as endothelial cell sprouting and migration in the forebrain and neural tube, and establishment of the blood-brain barrier (By similarity). Acts as a Wnt7-specific coactivator of canonical Wnt signaling: required to deliver RECK-bound Wnt7 to frizzled by assembling a higher-order RECK-ADGRA2-Fzd-LRP5-LRP6 complex (PubMed:[30026314](http://www.uniprot.org/citations/30026314)). ADGRA2-tethering function does not rely on its G-protein coupled receptor (GPCR) structure but instead on its combined capacity to interact with RECK extracellularly and recruit the Dishevelled scaffolding protein intracellularly (PubMed:[30026314](http://www.uniprot.org/citations/30026314))

target="_blank">30026314). Binds to the glycosaminoglycans heparin, heparin sulfate, chondroitin sulfate and dermatan sulfate (PubMed:16982628).

Cellular Location

Cell membrane; Multi-pass membrane protein. Cell projection, filopodium. Note=Enriched at lateral cell borders and also at sites of cell-ECM (extracellular matrix) contact

Tissue Location

Expressed in endothelial cells (at protein level) (PubMed:15021905, PubMed:16982628). Abundantly expressed in heart, placenta, ovary, small intestine, and colon (PubMed:15021905)

Volume

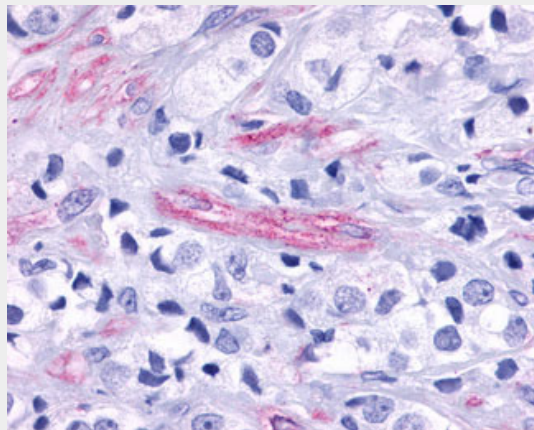
50 μ l

ADGRA2 / GPR124 Antibody (N-Terminus) - Protocols

Provided below are standard protocols that you may find useful for product applications.

- [Western Blot](#)
- [Blocking Peptides](#)
- [Dot Blot](#)
- [Immunohistochemistry](#)
- [Immunofluorescence](#)
- [Immunoprecipitation](#)
- [Flow Cytometry](#)
- [Cell Culture](#)

ADGRA2 / GPR124 Antibody (N-Terminus) - Images



Anti-GPR124 / TEM5 antibody IHC of human Prostate, Carcinoma Endothelial Cells.

ADGRA2 / GPR124 Antibody (N-Terminus) - Background

Endothelial receptor that acts as an essential regulator of CNS angiogenesis. Required for normal endothelial cell sprouting and migration in the forebrain and neural tube (By similarity).

ADGRA2 / GPR124 Antibody (N-Terminus) - References

Carson-Walter E.B., et al. Cancer Res. 61:6649-6655(2001).
Nagase T., et al. DNA Res. 7:143-150(2000).

Nakajima D.,et al.DNA Res. 9:99-106(2002).
Ota T.,et al.Nat. Genet. 36:40-45(2004).
Nusbaum C.,et al.Nature 439:331-335(2006).