

OR51E1 Antibody (Internal)
Rabbit Polyclonal Antibody
Catalog # ALS10456**Specification**

OR51E1 Antibody (Internal) - Product Information

Application	IHC
Primary Accession	Q8TCB6
Reactivity	Human, Mouse, Rabbit, Hamster, Monkey, Pig, Horse, Bovine, Dog
Host	Rabbit
Clonality	Polyclonal
Calculated MW	35kDa KDa

OR51E1 Antibody (Internal) - Additional Information**Gene ID** 143503**Other Names**

Olfactory receptor 51E1, D-GPCR, G-protein coupled receptor 164, Olfactory receptor 52A3, Prostate-overexpressed G protein-coupled receptor, Prostate-specific G protein-coupled receptor 2, OR51E1, GPR164, OR51E1P, OR52A3P, POGR, PSGR2

Target/Specificity

Human OR51E1. BLAST analysis of the peptide immunogen showed no homology with other human proteins, except OR51B5 (69%).

Reconstitution & Storage

Long term: -70°C; Short term: +4°C

Precautions

OR51E1 Antibody (Internal) is for research use only and not for use in diagnostic or therapeutic procedures.

OR51E1 Antibody (Internal) - Protein Information**Name** OR51E1**Synonyms** GPR164, OR51E1P, OR52A3P, POGR, PSGR2**Function**

Odorant receptor.

Cellular Location

Cell membrane; Multi-pass membrane protein

Tissue Location

Highly expressed in prostate. Very low levels may be detected in some other tissues, such as

placenta, skeletal muscle, heart, ovary and testis. Up-regulated in prostate cancers

Volume

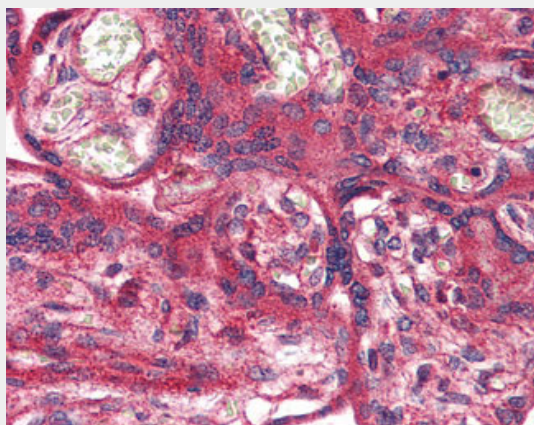
50 μ l

OR51E1 Antibody (Internal) - Protocols

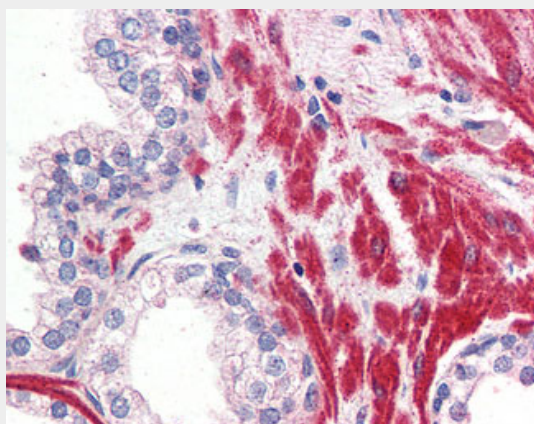
Provided below are standard protocols that you may find useful for product applications.

- [Western Blot](#)
- [Blocking Peptides](#)
- [Dot Blot](#)
- [Immunohistochemistry](#)
- [Immunofluorescence](#)
- [Immunoprecipitation](#)
- [Flow Cytometry](#)
- [Cell Culture](#)

OR51E1 Antibody (Internal) - Images



Anti-OR51E1 antibody ALS10456 IHC of human placenta.



Anti-OR51E1 antibody ALS10456 IHC of human prostate.

OR51E1 Antibody (Internal) - Background

Odorant receptor.

OR51E1 Antibody (Internal) - References

Weigle B., et al. *Biochem. Biophys. Res. Commun.* 322:239-249(2004).

Suwa M., et al. Submitted (JUL-2001) to the EMBL/GenBank/DDBJ databases.

Weng J., et al. *Int. J. Cancer* 118:1471-1480(2006).

Ota T., et al. *Nat. Genet.* 36:40-45(2004).

Mural R.J., et al. Submitted (SEP-2005) to the EMBL/GenBank/DDBJ databases.