

**OR51E1 Antibody (Cytoplasmic Domain)**  
**Rabbit Polyclonal Antibody**  
**Catalog # ALS10455**

**Specification**

---

**OR51E1 Antibody (Cytoplasmic Domain) - Product Information**

Application	IHC
Primary Accession	<a href="#">Q8TCB6</a>
Reactivity	Human, Monkey
Host	Rabbit
Clonality	Polyclonal
Calculated MW	35kDa KDa

**OR51E1 Antibody (Cytoplasmic Domain) - Additional Information**

**Gene ID** 143503

**Other Names**

Olfactory receptor 51E1, D-GPCR, G-protein coupled receptor 164, Olfactory receptor 52A3, Prostate-overexpressed G protein-coupled receptor, Prostate-specific G protein-coupled receptor 2, OR51E1, GPR164, OR51E1P, OR52A3P, POGR, PSGR2

**Target/Specificity**

Human OR51E1. BLAST analysis of the peptide immunogen showed no homology with other human proteins.

**Reconstitution & Storage**

Long term: -70°C; Short term: +4°C

**Precautions**

OR51E1 Antibody (Cytoplasmic Domain) is for research use only and not for use in diagnostic or therapeutic procedures.

**OR51E1 Antibody (Cytoplasmic Domain) - Protein Information**

**Name** OR51E1

**Synonyms** GPR164, OR51E1P, OR52A3P, POGR, PSGR2

**Function**

Odorant receptor.

**Cellular Location**

Cell membrane; Multi-pass membrane protein

**Tissue Location**

Highly expressed in prostate. Very low levels may be detected in some other tissues, such as placenta, skeletal muscle, heart, ovary and testis. Up-regulated in prostate cancers

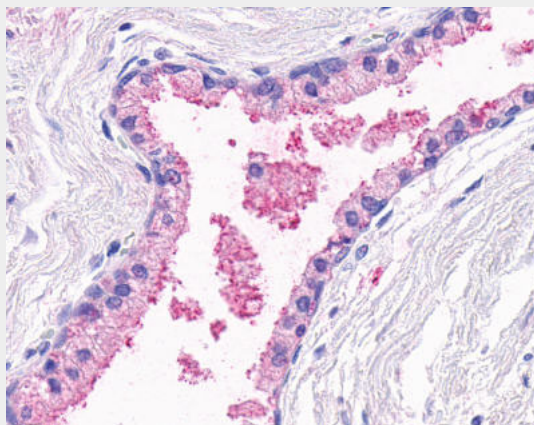
**Volume**  
50 µl

### **OR51E1 Antibody (Cytoplasmic Domain) - Protocols**

Provided below are standard protocols that you may find useful for product applications.

- [Western Blot](#)
- [Blocking Peptides](#)
- [Dot Blot](#)
- [Immunohistochemistry](#)
- [Immunofluorescence](#)
- [Immunoprecipitation](#)
- [Flow Cytometry](#)
- [Cell Culture](#)

### **OR51E1 Antibody (Cytoplasmic Domain) - Images**



Anti-OR51E1 antibody ALS10455 IHC of human prostate, glands.

### **OR51E1 Antibody (Cytoplasmic Domain) - Background**

Odorant receptor.

### **OR51E1 Antibody (Cytoplasmic Domain) - References**

Weigle B., et al. *Biochem. Biophys. Res. Commun.* 322:239-249(2004).  
Suwa M., et al. Submitted (JUL-2001) to the EMBL/GenBank/DDBJ databases.  
Weng J., et al. *Int. J. Cancer* 118:1471-1480(2006).  
Ota T., et al. *Nat. Genet.* 36:40-45(2004).  
Mural R.J., et al. Submitted (SEP-2005) to the EMBL/GenBank/DDBJ databases.