

GPR89A Antibody (Extracellular Domain)
Rabbit Polyclonal Antibody
Catalog # ALS10445

Specification

GPR89A Antibody (Extracellular Domain) - Product Information

Application	IHC
Primary Accession	B7ZA06
Reactivity	Human, Mouse, Zebrafish, Hamster, Monkey, Pig, Chicken, Horse, Xenopus, Bovine, Dog
Host	Rabbit
Clonality	Polyclonal

GPR89A Antibody (Extracellular Domain) - Additional Information

Gene ID 51463;653519

Other Names

Golgi pH regulator A, Protein GPR89A, Putative MAPK-activating protein PM01, Putative NF-kappa-B-activating protein 90, GPR89A, GPHRA, GPR89, SH120

Target/Specificity

Human GPR89A. BLAST analysis of the peptide immunogen showed no homology with other human proteins.

Reconstitution & Storage

Long term: -70°C; Short term: +4°C

Precautions

GPR89A Antibody (Extracellular Domain) is for research use only and not for use in diagnostic or therapeutic procedures.

GPR89A Antibody (Extracellular Domain) - Protein Information

Name GPR89A ([HGNC:31984](#))

Synonyms GPHRA, GPR89, SH120

Function

Voltage-gated channel that enables the transfer of monoatomic anions such as iodide, chloride, bromide and fluoride which may function in counter-ion conductance and participates in Golgi acidification (PubMed:18794847). Plays a role in lymphocyte development, probably by acting as a RABL3 effector in hematopoietic cells (By similarity).

Cellular Location

Golgi apparatus membrane; Multi-pass membrane protein

Tissue Location

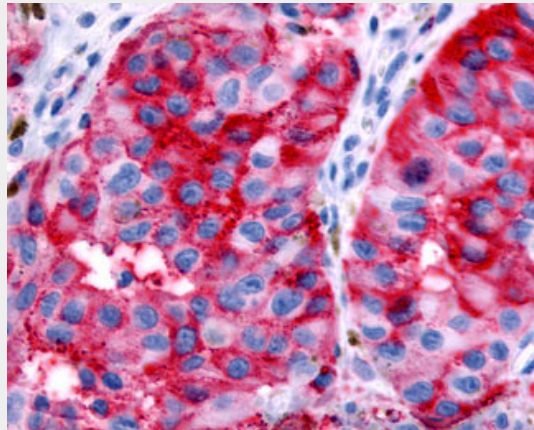
Ubiquitous..

GPR89A Antibody (Extracellular Domain) - Protocols

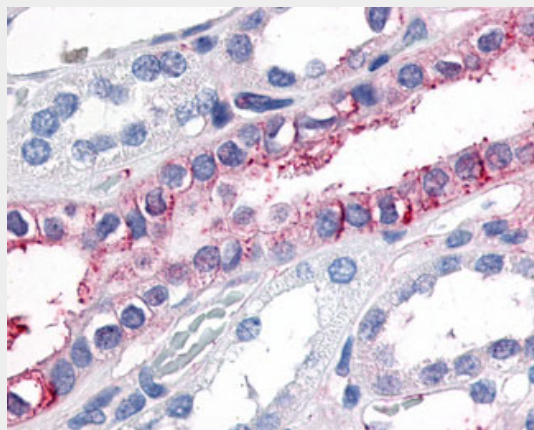
Provided below are standard protocols that you may find useful for product applications.

- [Western Blot](#)
- [Blocking Peptides](#)
- [Dot Blot](#)
- [Immunohistochemistry](#)
- [Immunofluorescence](#)
- [Immunoprecipitation](#)
- [Flow Cytometry](#)
- [Cell Culture](#)

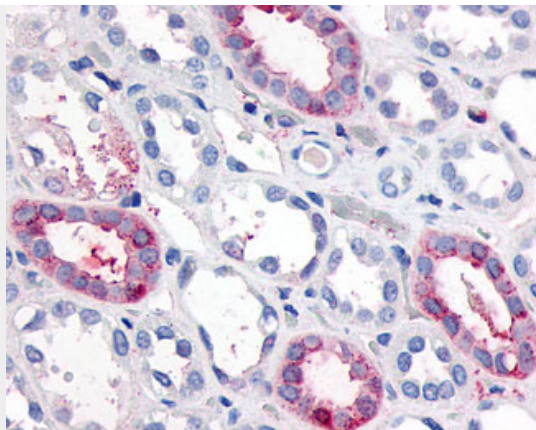
GPR89A Antibody (Extracellular Domain) - Images



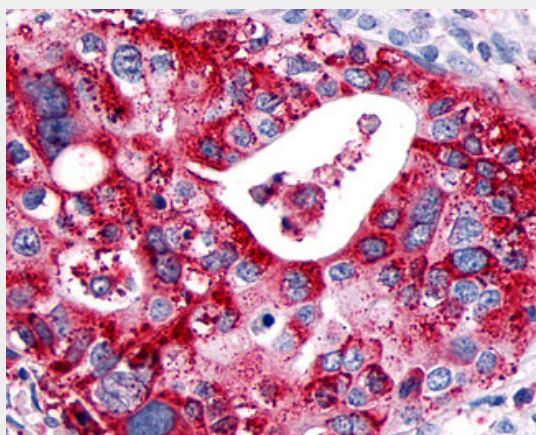
Anti-GPR89A antibody IHC of human Skin, Melanoma.



Anti-GPR89A antibody IHC of human kidney.



Anti-GPR89A antibody IHC of human kidney.



Anti-GPR89A antibody IHC of human Pancreas, Carcinoma.

GPR89A Antibody (Extracellular Domain) - Background

#N/A

GPR89A Antibody (Extracellular Domain) - References

#N/A