

**GPR89A Antibody (Cytoplasmic Domain)**  
**Rabbit Polyclonal Antibody**  
**Catalog # ALS10444**

**Specification**

---

**GPR89A Antibody (Cytoplasmic Domain) - Product Information**

Application	IHC
Primary Accession	<a href="#">B7ZA06</a>
Reactivity	Human, Mouse, Hamster, Monkey, Pig, Chicken, Xenopus, Bovine, Dog
Host	Rabbit
Clonality	Polyclonal

**GPR89A Antibody (Cytoplasmic Domain) - Additional Information**

**Gene ID** 51463;653519

**Other Names**

Golgi pH regulator A, Protein GPR89A, Putative MAPK-activating protein PM01, Putative NF-kappa-B-activating protein 90, GPR89A, GPHRA, GPR89, SH120

**Target/Specificity**

Human GPR89A. BLAST analysis of the peptide immunogen showed no homology with other human proteins.

**Reconstitution & Storage**

Long term: -70°C; Short term: +4°C

**Precautions**

GPR89A Antibody (Cytoplasmic Domain) is for research use only and not for use in diagnostic or therapeutic procedures.

**GPR89A Antibody (Cytoplasmic Domain) - Protein Information**

**Name** GPR89A ([HGNC:31984](#))

**Synonyms** GPHRA, GPR89, SH120

**Function**

Voltage-gated channel that enables the transfer of monoatomic anions such as iodide, chloride, bromide and fluoride which may function in counter-ion conductance and participates in Golgi acidification (PubMed:<a href="http://www.uniprot.org/citations/18794847" target="\_blank">18794847</a>). Plays a role in lymphocyte development, probably by acting as a RABL3 effector in hematopoietic cells (By similarity).

**Cellular Location**

Golgi apparatus membrane; Multi-pass membrane protein

**Tissue Location**

Ubiquitous..

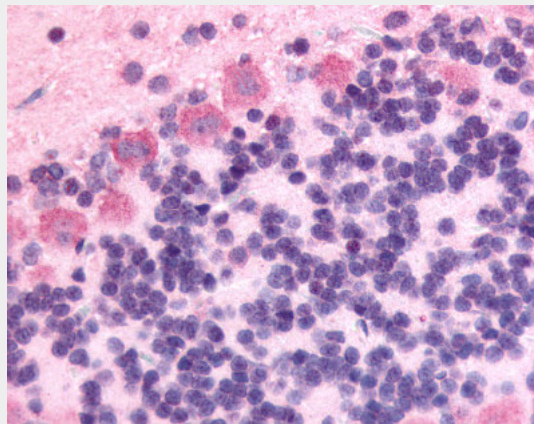
**Volume**

50 µl

**GPR89A Antibody (Cytoplasmic Domain) - Protocols**

Provided below are standard protocols that you may find useful for product applications.

- [Western Blot](#)
- [Blocking Peptides](#)
- [Dot Blot](#)
- [Immunohistochemistry](#)
- [Immunofluorescence](#)
- [Immunoprecipitation](#)
- [Flow Cytometry](#)
- [Cell Culture](#)

**GPR89A Antibody (Cytoplasmic Domain) - Images**

Anti-GPR89A antibody ALS10444 IHC of rat brain, Purkinje neurons.

**GPR89A Antibody (Cytoplasmic Domain) - Background**

#N/A

**GPR89A Antibody (Cytoplasmic Domain) - References**

#N/A