

ADGRG6 / GPR126 Antibody (C-Terminus)
Rabbit Polyclonal Antibody
Catalog # ALS10436**Specification**

ADGRG6 / GPR126 Antibody (C-Terminus) - Product Information

Application	IHC
Primary Accession	O86SQ4
Reactivity	Human
Host	Rabbit
Clonality	Polyclonal
Calculated MW	137kDa KDa

ADGRG6 / GPR126 Antibody (C-Terminus) - Additional Information

Gene ID 57211

Other Names

G-protein coupled receptor 126, Developmentally regulated G-protein-coupled receptor, Vascular inducible G protein-coupled receptor, GPR126, DREG, VIGR

Target/Specificity

Human GPR126. BLAST analysis of the peptide immunogen showed no homology with other human proteins.

Reconstitution & Storage

Long term: -70°C; Short term: +4°C

Precautions

ADGRG6 / GPR126 Antibody (C-Terminus) is for research use only and not for use in diagnostic or therapeutic procedures.

ADGRG6 / GPR126 Antibody (C-Terminus) - Protein Information

Name ADGRG6 ([HGNC:13841](#))

Synonyms DREG, GPR126, VIGR

Function

G-protein coupled receptor which is activated by type IV collagen, a major constituent of the basement membrane (By similarity). Couples to G(i)-proteins as well as G(s)-proteins (PubMed:24227709). Essential for normal differentiation of promyelinating Schwann cells and for normal myelination of axons (PubMed:24227709). Regulates neural, cardiac and ear development via G-protein- and/or N-terminus- dependent signaling (By similarity). May act as a receptor for PRNP which may promote myelin homeostasis (By similarity).

Cellular Location

Cell membrane; Multi-pass membrane protein. Note=Detected on the cell surface of activated but not resting umbilical vein

Tissue Location

Expressed in placenta and to a lower extent in pancreas and liver. Detected in aortic endothelial cells but not in skin microvascular endothelial cells.

Volume

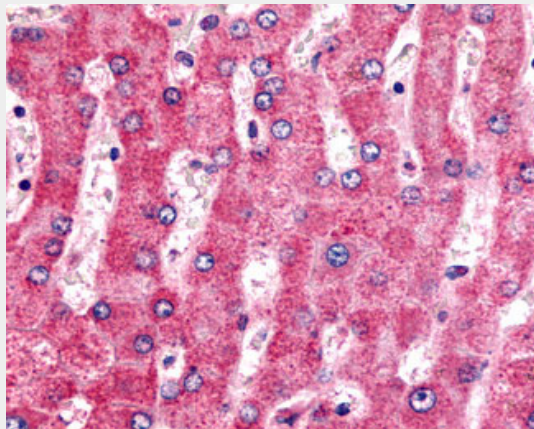
50 μ l

ADGRG6 / GPR126 Antibody (C-Terminus) - Protocols

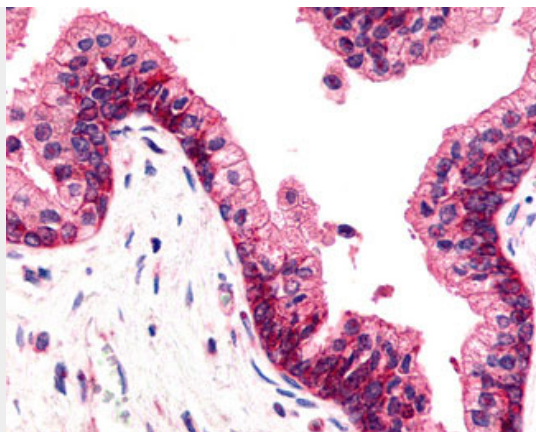
Provided below are standard protocols that you may find useful for product applications.

- [Western Blot](#)
- [Blocking Peptides](#)
- [Dot Blot](#)
- [Immunohistochemistry](#)
- [Immunofluorescence](#)
- [Immunoprecipitation](#)
- [Flow Cytometry](#)
- [Cell Culture](#)

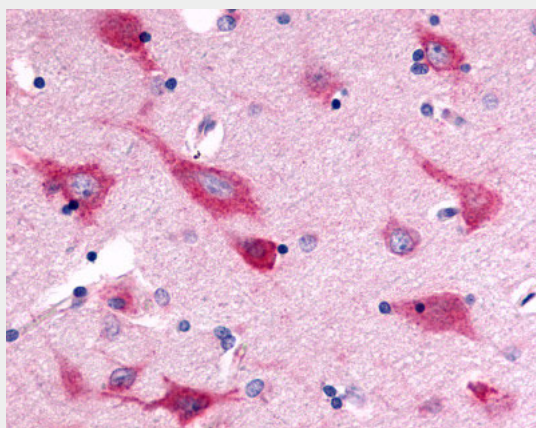
ADGRG6 / GPR126 Antibody (C-Terminus) - Images



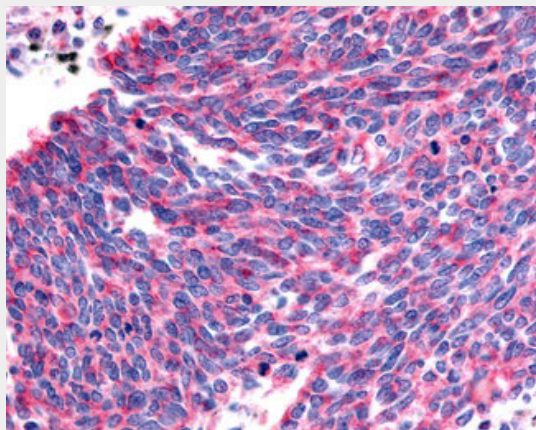
Anti-DREG / GPR126 antibody IHC of human liver.



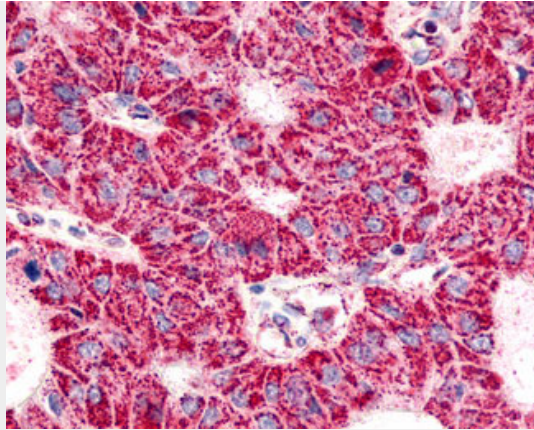
Anti-DREG / GPR126 antibody IHC of human prostate.



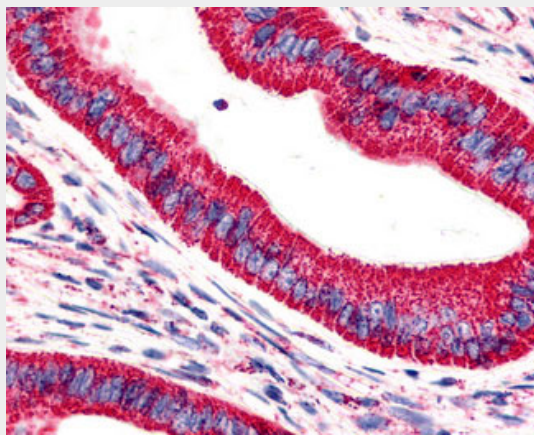
Anti-GPR126 antibody ALS10436 IHC of human brain, neurons and glia.



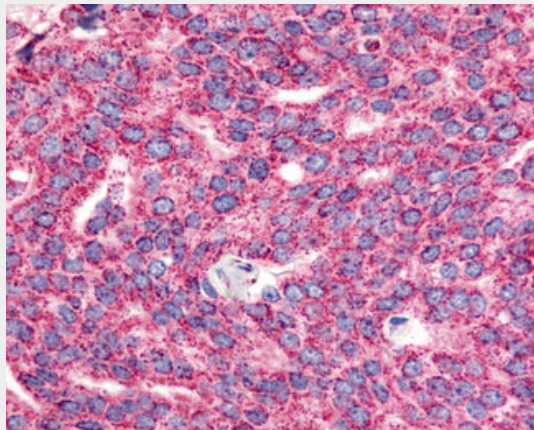
Anti-DREG / GPR126 antibody IHC of human Lung, Small Cell Carcinoma.



Anti-DREG / GPR126 antibody IHC of human Lung, Adenocarcinoma.



Anti-DREG / GPR126 antibody IHC of human Pancreas, Carcinoma.



Anti-DREG / GPR126 antibody IHC of human prostate, carcinoma.

ADGRG6 / GPR126 Antibody (C-Terminus) - Background

Orphan receptor. May be required for normal differentiation of promyelinating Schwann cells and for normal myelination of axons. Signals probably through G-proteins to transiently elevate cAMP levels (By similarity).

ADGRG6 / GPR126 Antibody (C-Terminus) - References

Stehlik C., et al. FEBS Lett. 569:149-155(2004).
Moriguchi T., et al. Genes Cells 9:549-560(2004).

Bechtel S.,et al.BMC Genomics 8:399-399(2007).
Mungall A.J.,et al.Nature 425:805-811(2003).
Ota T.,et al.Nat. Genet. 36:40-45(2004).