

GPR162 Antibody (Extracellular Domain)
Rabbit Polyclonal Antibody
Catalog # ALS10434

Specification

GPR162 Antibody (Extracellular Domain) - Product Information

Application	IHC
Primary Accession	Q16538
Reactivity	Human, Mouse
Host	Rabbit
Clonality	Polyclonal
Calculated MW	64kDa KDa

GPR162 Antibody (Extracellular Domain) - Additional Information

Gene ID 27239

Other Names

Probable G-protein coupled receptor 162, Gene-rich cluster gene A protein, GPR162, GRCA

Target/Specificity

Human GPR162. BLAST analysis of the peptide immunogen showed no homology with other human proteins, except MADD (72%).

Reconstitution & Storage

Long term: -70°C; Short term: +4°C

Precautions

GPR162 Antibody (Extracellular Domain) is for research use only and not for use in diagnostic or therapeutic procedures.

GPR162 Antibody (Extracellular Domain) - Protein Information

Name GPR162

Synonyms GRCA

Function

Orphan receptor.

Cellular Location

Cell membrane; Multi-pass membrane protein

Volume

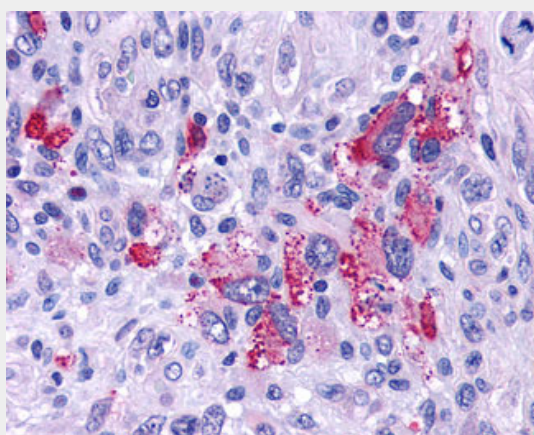
50 µl

GPR162 Antibody (Extracellular Domain) - Protocols

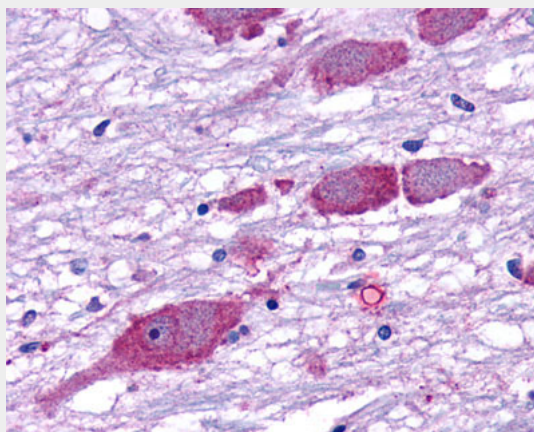
Provided below are standard protocols that you may find useful for product applications.

- [Western Blot](#)
- [Blocking Peptides](#)
- [Dot Blot](#)
- [Immunohistochemistry](#)
- [Immunofluorescence](#)
- [Immunoprecipitation](#)
- [Flow Cytometry](#)
- [Cell Culture](#)

GPR162 Antibody (Extracellular Domain) - Images



Anti-GPR162 antibody IHC of human Brain, Glioblastoma.



Anti-GPR162 antibody ALS10434 IHC of human brain, neurons and glia.

GPR162 Antibody (Extracellular Domain) - Background

Orphan receptor.

GPR162 Antibody (Extracellular Domain) - References

- Ansari-Lari M.A., et al. *Genome Res.* 6:314-326(1996).
Ansari-Lari M.A., et al. *Genome Res.* 7:268-280(1997).
Totoki Y., et al. Submitted (MAR-2005) to the EMBL/GenBank/DDBJ databases.

