

**GPR162 Antibody (Extracellular Domain)**  
**Rabbit Polyclonal Antibody**  
**Catalog # ALS10433****Specification**

---

**GPR162 Antibody (Extracellular Domain) - Product Information**

Application	IHC
Primary Accession	<a href="#">Q16538</a>
Reactivity	Human, Monkey, Pig, Horse, Dog
Host	Rabbit
Clonality	Polyclonal
Calculated MW	64kDa KDa

**GPR162 Antibody (Extracellular Domain) - Additional Information****Gene ID** 27239**Other Names**

Probable G-protein coupled receptor 162, Gene-rich cluster gene A protein, GPR162, GRCA

**Target/Specificity**

Human GPR162. BLAST analysis of the peptide immunogen showed no homology with other human proteins.

**Reconstitution & Storage**

Long term: -70°C; Short term: +4°C

**Precautions**

GPR162 Antibody (Extracellular Domain) is for research use only and not for use in diagnostic or therapeutic procedures.

**GPR162 Antibody (Extracellular Domain) - Protein Information****Name** GPR162**Synonyms** GRCA**Function**

Orphan receptor.

**Cellular Location**

Cell membrane; Multi-pass membrane protein

**Volume**

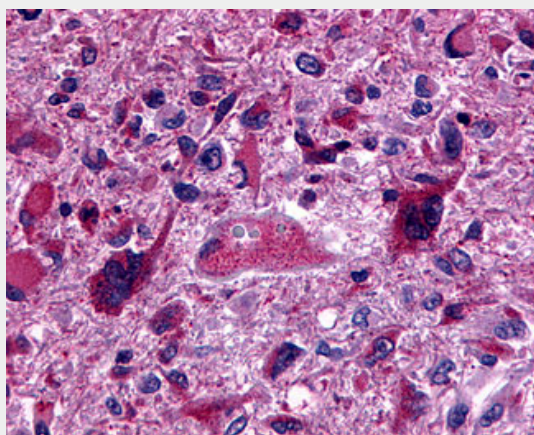
50 µl

## GPR162 Antibody (Extracellular Domain) - Protocols

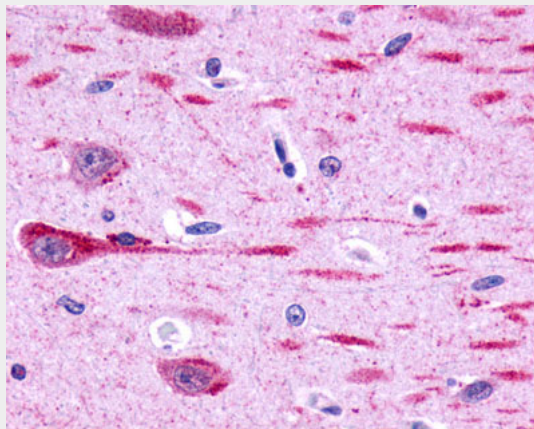
Provided below are standard protocols that you may find useful for product applications.

- [Western Blot](#)
- [Blocking Peptides](#)
- [Dot Blot](#)
- [Immunohistochemistry](#)
- [Immunofluorescence](#)
- [Immunoprecipitation](#)
- [Flow Cytometry](#)
- [Cell Culture](#)

## GPR162 Antibody (Extracellular Domain) - Images



Anti-GPR162 antibody IHC of human Brain, Glioblastoma.



Anti-GPR162 antibody ALS10433 IHC of human brain, neurons and glia.

## GPR162 Antibody (Extracellular Domain) - Background

Orphan receptor.

## GPR162 Antibody (Extracellular Domain) - References

- Ansari-Lari M.A., et al. *Genome Res.* 6:314-326(1996).  
Ansari-Lari M.A., et al. *Genome Res.* 7:268-280(1997).  
Totoki Y., et al. Submitted (MAR-2005) to the EMBL/GenBank/DDBJ databases.

