

GPR61 Antibody (N-Terminus)
Rabbit Polyclonal Antibody
Catalog # ALS10430

Specification

GPR61 Antibody (N-Terminus) - Product Information

Application	IHC
Primary Accession	O9BZJ8
Reactivity	Human, Pig
Host	Rabbit
Clonality	Polyclonal
Calculated MW	49kDa KDa

GPR61 Antibody (N-Terminus) - Additional Information

Gene ID 83873

Other Names

Probable G-protein coupled receptor 61, Biogenic amine receptor-like G-protein coupled receptor, GPR61, BALGR

Target/Specificity

Human GPR61. BLAST analysis of the peptide immunogen showed no homology with other human proteins, except MAGED4 (56%), METTL3 (56%).

Reconstitution & Storage

Long term: -70°C; Short term: +4°C

Precautions

GPR61 Antibody (N-Terminus) is for research use only and not for use in diagnostic or therapeutic procedures.

GPR61 Antibody (N-Terminus) - Protein Information

Name GPR61

Synonyms BALGR {ECO:0000303|PubMed:11690637}, GPC

Function

Orphan G-protein coupled receptor. Constitutively activates the G(s)-alpha/cAMP signaling pathway (PubMed:28827538). Shows a reciprocal regulatory interaction with the melatonin receptor MTNR1B most likely through receptor heteromerization (PubMed:28827538). May be involved in the regulation of food intake and body weight (By similarity).

Cellular Location

Cell membrane; Multi-pass membrane protein. Endosome membrane; Multi- pass membrane

protein. Note=Colocalizes with ARRB2/beta- arrestin-2 in the endosome (PubMed:28827538)

Tissue Location

Expressed in brain; detected in frontal and temporal lobes, occipital pole, amygdala and hippocampus (PubMed:11690637, PubMed:29226084). Also expressed in testis (PubMed:11690637, PubMed:29226084) and T cells, B cells, and monocyte (PubMed:29226084). Low expression in many other tissues (PubMed:11690637, PubMed:29226084). Widely expressed in the hippocampus (at protein level).

Volume

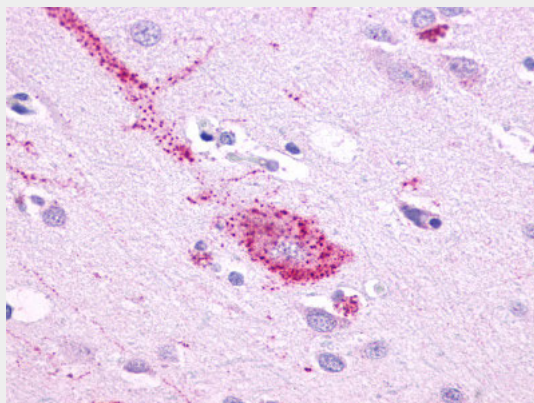
50 μ l

GPR61 Antibody (N-Terminus) - Protocols

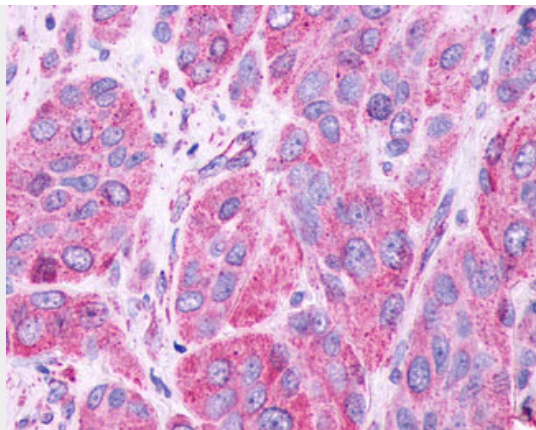
Provided below are standard protocols that you may find useful for product applications.

- [Western Blot](#)
- [Blocking Peptides](#)
- [Dot Blot](#)
- [Immunohistochemistry](#)
- [Immunofluorescence](#)
- [Immunoprecipitation](#)
- [Flow Cytometry](#)
- [Cell Culture](#)

GPR61 Antibody (N-Terminus) - Images



Anti-GPR61 antibody ALS10430 IHC of human brain, neurons and glia.



Anti-GPR61 antibody IHC of human Skin, Melanoma.

GPR61 Antibody (N-Terminus) - Background

Orphan receptor.

GPR61 Antibody (N-Terminus) - References

- Lee D.K.,et al.Brain Res. Mol. Brain Res. 86:13-22(2001).
- Cikos S.,et al.Biochim. Biophys. Acta 1521:66-72(2001).
- Takeda S.,et al.FEBS Lett. 520:97-101(2002).
- Ota T.,et al.Nat. Genet. 36:40-45(2004).
- Gregory S.G.,et al.Nature 441:315-321(2006).