

**GPR32 Antibody (Extracellular Domain)**  
**Rabbit Polyclonal Antibody**  
**Catalog # ALS10429****Specification**

---

**GPR32 Antibody (Extracellular Domain) - Product Information**

Application	IHC
Primary Accession	<a href="#">O75388</a>
Reactivity	Human
Host	Rabbit
Clonality	Polyclonal
Calculated MW	40kDa KDa

**GPR32 Antibody (Extracellular Domain) - Additional Information****Gene ID** 2854**Other Names**

Probable G-protein coupled receptor 32, GPR32

**Target/Specificity**

Human GPR32. BLAST analysis of the peptide immunogen showed no homology with other human proteins.

**Reconstitution & Storage**

Long term: -70°C; Short term: +4°C

**Precautions**

GPR32 Antibody (Extracellular Domain) is for research use only and not for use in diagnostic or therapeutic procedures.

**GPR32 Antibody (Extracellular Domain) - Protein Information****Name** GPR32**Function**

G-protein coupled receptor that binds to several ligands including resolvin D1 (RvD1) with high affinity, leading to rapid and transient activation of numerous intracellular signaling pathways. In macrophages, enhances the RvD1-stimulated phagocytic and clearance functions (PubMed:<a href="http://www.uniprot.org/citations/20080636" target="\_blank">20080636</a>). Macrophages migrate less toward different chemoattractant stimuli but phagocytose more microbial particles (PubMed:<a href="http://www.uniprot.org/citations/26969756" target="\_blank">26969756</a>). Prevents the increase in Ca(2+) and activation of ERK1/2 used by histamine and its H1 receptor subtype to induce goblet cell secretion by activating PKC and GRK2 to counter-regulate the histamine receptor (PubMed:<a href="http://www.uniprot.org/citations/23462912" target="\_blank">23462912</a>).

**Cellular Location**

Cell membrane; Multi-pass membrane protein.

**Tissue Location**

Expressed in resting primary human macrophages.

**Volume**

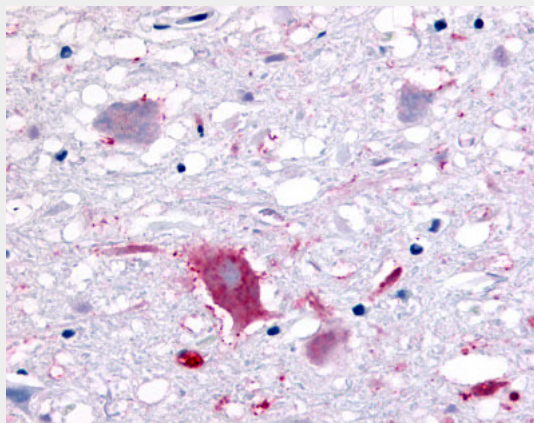
50  $\mu$ l

**GPR32 Antibody (Extracellular Domain) - Protocols**

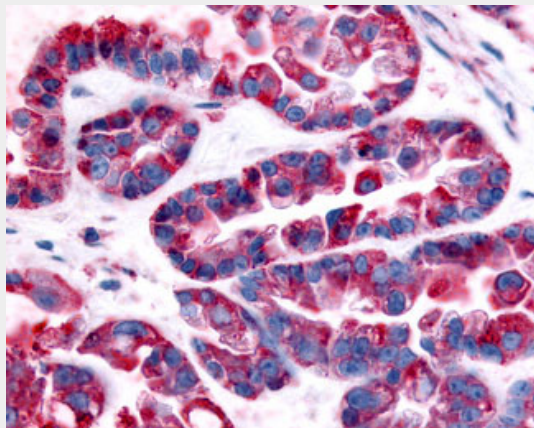
Provided below are standard protocols that you may find useful for product applications.

- [Western Blot](#)
- [Blocking Peptides](#)
- [Dot Blot](#)
- [Immunohistochemistry](#)
- [Immunofluorescence](#)
- [Immunoprecipitation](#)
- [Flow Cytometry](#)
- [Cell Culture](#)

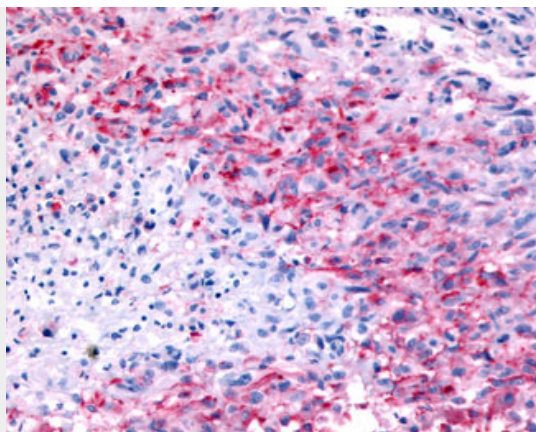
**GPR32 Antibody (Extracellular Domain) - Images**



Anti-GPR32 antibody ALS10429 IHC of human brain, neurons and glia.



Anti-GPR32 antibody IHC of human Ovary, Carcinoma.



Anti-GPR32 antibody IHC of human Brain, Glioblastoma.

### **GPR32 Antibody (Extracellular Domain) - Background**

Orphan receptor.

### **GPR32 Antibody (Extracellular Domain) - References**

Marchese A., et al. Genomics 50:281-286(1998).