

**GPR65 / TDAG8 Antibody (Cytoplasmic Domain)**  
**Rabbit Polyclonal Antibody**  
**Catalog # ALS10421**

**Specification**

---

**GPR65 / TDAG8 Antibody (Cytoplasmic Domain) - Product Information**

Application	IHC
Primary Accession	<a href="#">Q8IYL9</a>
Reactivity	Human
Host	Rabbit
Clonality	Polyclonal
Calculated MW	39kDa KDa

**GPR65 / TDAG8 Antibody (Cytoplasmic Domain) - Additional Information**

**Gene ID** 8477

**Other Names**

Psychosine receptor, G-protein coupled receptor 65, T-cell death-associated gene 8 protein, GPR65, TDAG8

**Target/Specificity**

Human GPR65. BLAST analysis of the peptide immunogen showed no homology with other human proteins.

**Reconstitution & Storage**

Long term: -70°C; Short term: +4°C

**Precautions**

GPR65 / TDAG8 Antibody (Cytoplasmic Domain) is for research use only and not for use in diagnostic or therapeutic procedures.

**GPR65 / TDAG8 Antibody (Cytoplasmic Domain) - Protein Information**

**Name** GPR65

**Synonyms** TDAG8

**Function**

Receptor for the glycosphingolipid psychosine (PSY) and several related glycosphingolipids (PubMed:<a href="http://www.uniprot.org/citations/11309421" target="\_blank">11309421</a>). Plays a role in immune response by maintaining lysosome function and supporting phagocytosis-mediated intracellular bacteria clearance (PubMed:<a href="http://www.uniprot.org/citations/27287411" target="\_blank">27287411</a>). May have a role in activation-induced cell death or differentiation of T-cells (By similarity).

**Cellular Location**

Cell membrane; Multi-pass membrane protein

### Tissue Location

Predominantly expressed in thymus, spleen, lymph nodes, small intestine, lung, placenta and peripheral blood leukocytes

### Volume

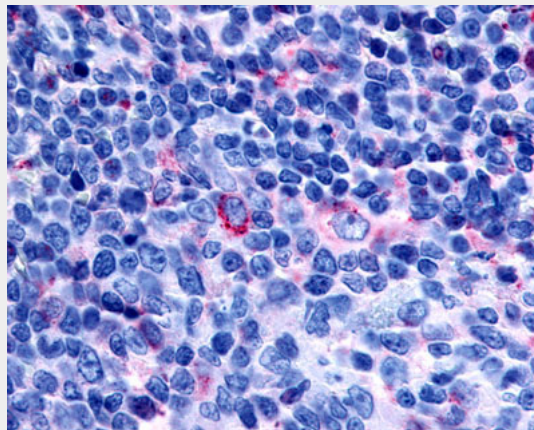
50 µl

### GPR65 / TDAG8 Antibody (Cytoplasmic Domain) - Protocols

Provided below are standard protocols that you may find useful for product applications.

- [Western Blot](#)
- [Blocking Peptides](#)
- [Dot Blot](#)
- [Immunohistochemistry](#)
- [Immunofluorescence](#)
- [Immunoprecipitation](#)
- [Flow Cytometry](#)
- [Cell Culture](#)

### GPR65 / TDAG8 Antibody (Cytoplasmic Domain) - Images



Anti-GPR65 antibody ALS10421 IHC of human tonsil.

### GPR65 / TDAG8 Antibody (Cytoplasmic Domain) - Background

Receptor for the glycosphingolipid psychosine (PSY) and several related glycosphingolipids. May have a role in activation- induced cell death or differentiation of T-cells.

### GPR65 / TDAG8 Antibody (Cytoplasmic Domain) - References

Kyaw H., et al. DNA Cell Biol. 17:493-500(1998).  
Heilig R., et al. Nature 421:601-607(2003).  
Im D.-S., et al. J. Cell Biol. 153:429-434(2001).