

**GPR88 Antibody (C-Terminus)**  
**Rabbit Polyclonal Antibody**  
**Catalog # ALS10400**

**Specification**

---

**GPR88 Antibody (C-Terminus) - Product Information**

|                   |                                   |
|-------------------|-----------------------------------|
| Application       | IHC                               |
| Primary Accession | <a href="#">O9GZNO</a>            |
| Reactivity        | Human, Mouse, Rabbit, Monkey, Pig |
| Host              | Rabbit                            |
| Clonality         | Polyclonal                        |
| Calculated MW     | 40kDa KDa                         |

**GPR88 Antibody (C-Terminus) - Additional Information**

**Gene ID** 54112

**Other Names**

Probable G-protein coupled receptor 88, Striatum-specific G-protein coupled receptor, GPR88, STRG

**Target/Specificity**

Human GPR88. BLAST analysis of the peptide immunogen showed no homology with other human proteins.

**Reconstitution & Storage**

Long term: -70°C; Short term: +4°C

**Precautions**

GPR88 Antibody (C-Terminus) is for research use only and not for use in diagnostic or therapeutic procedures.

**GPR88 Antibody (C-Terminus) - Protein Information**

**Name** GPR88

**Synonyms** STRG

**Function**

Orphan G protein-coupled receptor implicated in a large repertoire of behavioral responses that engage motor activities, spatial learning, and emotional processing (By similarity). May play a role in the regulation of cognitive and motor function (By similarity). Couples with the heterotrimeric G protein complex of the G(i) subfamily, consisting of GNAI1, GNB1 and GNG2, thereby acting through a G(i)-mediated pathway (PubMed:<a href="http://www.uniprot.org/citations/35501348" target="\_blank">35501348</a>). Plays a role in the attenuation of D1 dopamine receptor (D1R)-mediated cAMP response in ciliated cells (PubMed:<a href="http://www.uniprot.org/citations/23936473" target="\_blank">23936473</a>). In non-ciliated cells, involved in the inhibition of the beta-2 adrenergic receptor (B2AR) response

(PubMed:<a href="http://www.uniprot.org/citations/23936473" target="\_blank">23936473</a>).

#### Cellular Location

Cell membrane {ECO:0000250|UniProtKB:Q9ESP4}; Multi-pass membrane protein. Cell projection, cilium membrane; Multi-pass membrane protein. Cytoplasm {ECO:0000250|UniProtKB:Q9ESP4}. Nucleus {ECO:0000250|UniProtKB:Q9ESP4}. Note=Localized to cilia in ciliated cells; whereas in non-ciliated cells, distributed throughout the cell membrane (PubMed:23936473). During cortical lamination, subcellular location shifts, on the day of birth, from expression at the plasma membrane and in the cytoplasm to the nuclei of neurons. This intranuclear localization remains throughout adulthood {ECO:0000250|UniProtKB:Q9ESP4, ECO:0000269|PubMed:23936473}

#### Tissue Location

Expressed predominantly in the striatum.

#### Volume

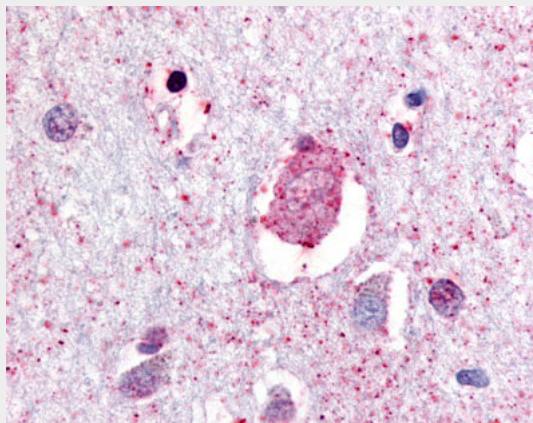
50 µl

### GPR88 Antibody (C-Terminus) - Protocols

Provided below are standard protocols that you may find useful for product applications.

- [Western Blot](#)
- [Blocking Peptides](#)
- [Dot Blot](#)
- [Immunohistochemistry](#)
- [Immunofluorescence](#)
- [Immunoprecipitation](#)
- [Flow Cytometry](#)
- [Cell Culture](#)

### GPR88 Antibody (C-Terminus) - Images



Anti-GPR88 antibody ALS10400 IHC of human brain, neurons and glia.

### GPR88 Antibody (C-Terminus) - Background

Orphan receptor.

### GPR88 Antibody (C-Terminus) - References

Mizushima K., et al. Genomics 69:314-321(2000).

Kopatz S.A.,et al.Submitted (JUL-2003) to the EMBL/GenBank/DDBJ databases.  
Gregory S.G.,et al.Nature 441:315-321(2006).