

GPR88 Antibody (Internal)
Rabbit Polyclonal Antibody
Catalog # ALS10399**Specification**

GPR88 Antibody (Internal) - Product Information

Application	IHC
Primary Accession	O9GZNO
Reactivity	Human, Mouse, Rabbit, Bovine
Host	Rabbit
Clonality	Polyclonal
Calculated MW	40kDa KDa

GPR88 Antibody (Internal) - Additional Information**Gene ID** 54112**Other Names**

Probable G-protein coupled receptor 88, Striatum-specific G-protein coupled receptor, GPR88, STRG

Target/Specificity

Human GPR88. BLAST analysis of the peptide immunogen showed no homology with other human proteins.

Reconstitution & Storage

Long term: -70°C; Short term: +4°C

Precautions

GPR88 Antibody (Internal) is for research use only and not for use in diagnostic or therapeutic procedures.

GPR88 Antibody (Internal) - Protein Information**Name** GPR88**Synonyms** STRG**Function**

Orphan G protein-coupled receptor implicated in a large repertoire of behavioral responses that engage motor activities, spatial learning, and emotional processing (By similarity). May play a role in the regulation of cognitive and motor function (By similarity). Couples with the heterotrimeric G protein complex of the G(i) subfamily, consisting of GNAI1, GNB1 and GNG2, thereby acting through a G(i)-mediated pathway (PubMed:35501348). Plays a role in the attenuation of D1 dopamine receptor (D1R)-mediated cAMP response in ciliated cells (PubMed:23936473). In non-ciliated cells, involved in the inhibition of the beta-2 adrenergic receptor (B2AR) response

(PubMed:23936473).

Cellular Location

Cell membrane {ECO:0000250|UniProtKB:Q9ESP4}; Multi-pass membrane protein. Cell projection, cilium membrane; Multi-pass membrane protein. Cytoplasm {ECO:0000250|UniProtKB:Q9ESP4}. Nucleus {ECO:0000250|UniProtKB:Q9ESP4}. Note=Localized to cilia in ciliated cells; whereas in non-ciliated cells, distributed throughout the cell membrane (PubMed:23936473). During cortical lamination, subcellular location shifts, on the day of birth, from expression at the plasma membrane and in the cytoplasm to the nuclei of neurons. This intranuclear localization remains throughout adulthood {ECO:0000250|UniProtKB:Q9ESP4, ECO:0000269|PubMed:23936473}

Tissue Location

Expressed predominantly in the striatum.

Volume

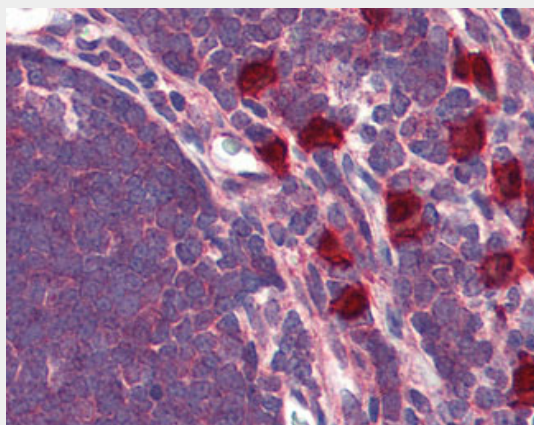
50 μ l

GPR88 Antibody (Internal) - Protocols

Provided below are standard protocols that you may find useful for product applications.

- [Western Blot](#)
- [Blocking Peptides](#)
- [Dot Blot](#)
- [Immunohistochemistry](#)
- [Immunofluorescence](#)
- [Immunoprecipitation](#)
- [Flow Cytometry](#)
- [Cell Culture](#)

GPR88 Antibody (Internal) - Images



Anti-GPR88 antibody ALS10399 IHC of human thymus.

GPR88 Antibody (Internal) - Background

Orphan receptor.

GPR88 Antibody (Internal) - References

Mizushima K., et al. Genomics 69:314-321(2000).

Kopatz S.A., et al. Submitted (JUL-2003) to the EMBL/GenBank/DDBJ databases.
Gregory S.G., et al. Nature 441:315-321(2006).